

Project		Catalog #		Type	
Prepared by		Notes		Date	



# Ephesus

## LUMASPORT 8 PRISM - Local

Tunable RGB LED Sports & Entertainment Luminaire

### Typical Applications

Pro Arenas • University & Collegiate Arenas • University & Collegiate Stadiums • Multi-Event & Convention Centers • Gymnasiums & Field Houses

### Interactive Menu

- Dimensional Details [page 1](#)
- Ordering Information [page 2](#)
- Dimensional and Mounting Details [page 3](#)
- Visor (VHE) Configuration [page 4](#)
- Performance Data [page 5](#)
- Optical Performance Data [page 6](#)
- Ordering Information for Accessories [page 8](#)
- Accessory Dimensions and Part Details [page 9](#)
- Example System Topology [page 12](#)

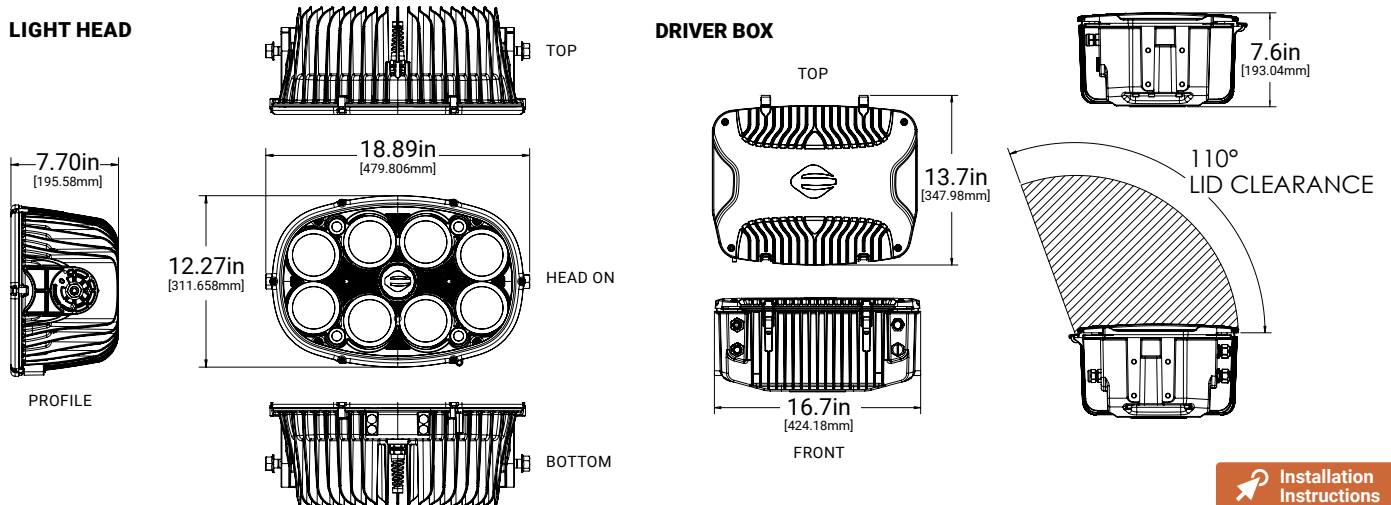
### Product Certification



### Top Product Features

- Custom source selection offers broadest range of color mixing
- Fully saturated color provides an unmatched visual fan experience
- Array of optic beams from narrow to wide creates an immersive atmosphere
- Glare and cutoff control via Hybrid Reflector and TIR Optical System
- Reduce install time with pre-aimable two-piece assembly
- Industry leading light source reliability with Chip-on-Board LEDs
- Controllable with both wired DMX and wireless AirMesh to suit your needs.

## Dimensional Details



[Installation Instructions](#)

## Order Information

NOTE: A complete fixture order requires a selection entry for **Brand, Family, Model Size, Power Configuration, Luminaire Color, Color Combination, Source Type, Optic, Light Head Cable (DC), Voltage, Control, Light Head Mount, Power Cable (AC), Visors, Special Option.**

SAMPLE ORDER NUMBER: EPH-LS-08-500PL-BLK-RGB-CL-5S-PR04-LV-AM-LY-A00-HEG-ST

Brand	Family	Model Size	Power Configuration	Luminaire Color	Color Combination	Source Type	Optic
Brand	Family	Model Size	Power Configuration	Luminaire Color <sup>3</sup>	Color Combination	Source Type	Optic <sup>4</sup>
EPH = Ephesus, Standard TAA=Trade Agreements Act <sup>1</sup>	LS = Lumasport	08 = 8 Optics	500PL = Prism Model, Local Power <sup>2</sup> 500PS = Prism Model, Satellite	BLK = Black WHT = White	RGB = Red/Green/Blue	CL = Color RGB	2S = NEMA 3   21.9   40.2 4S = NEMA 4   36.0   64.4 5S = NEMA 5   46.6   82.6 7F = NEMA 7   72.5   131.0
Notes: (1) Only product configurations with this designated prefix are built to be compliant with the Trade Agreements Act of 1979 (TAA). Please refer to <a href="#">DOMESTIC PREFERENCES</a> website for more information. Components shipped separately may be separately analyzed under domestic preference requirements.			Notes: (2) Local Power means that the light head is attached to the driver box with the yoke or pendant mount.	Notes: (3) Not coastal rated. Contact Ephesus for coastal fixture options.			Notes: (4) Optic = NEMA TYPE; BEAM ANGLE; FIELD ANGLE. Additional optical performance data within spec sheet.

Light Head Cable (DC)	Voltage	Control	Light Head Mount	Power Cable (AC)	Visors	Special Option
Light Head Cable (DC) <sup>6</sup>	Voltage	Control	Light Head Mount	Power Cable (AC) <sup>11</sup>	Visors <sup>13</sup>	Special Option
PR04 = Standard Connectorized PR12 = 12ft Cable, Connectorized <sup>7</sup>	LV = Low Voltage HV = High Voltage	AM = Wireless AirMesh LB = Wired DMX	LY = Local Yoke <sup>8</sup> LP = Local Pendant <sup>9</sup> BY = Bottom Mount Yoke <sup>9, 10</sup>	A00 = No Cable, Standard A04 = 4ft Cable A10 = 10ft Cable A15 = 15ft Cable BH3 = 3-foot long 3-pin connectorized AC cable <sup>12</sup>	HEG = No Visor   High Efficiency Glass Lens VHE = Visor   High Efficiency Glass Lens	ST = Standard
Notes: (6) DC Cable connecting the light head to the driver box. (7) PR12 = 12ft Cable is intended to be used with the Ephesus Catwalk Bracket			Notes: (8) LY and LP only available with 500PL option (9) Typically used with the Ephesus catwalk bracket. (10) BY only available with 500PS	Notes: (11) AC Cable connecting the Driver Box to the electrical power source. (12) BH3 only for Ephesus prewired crossarms	Notes: (13) Accessories sold separately will be separately analyzed under domestic preference requirements. Consult factory for further information.	

DesignLights Consortium® Qualified. Refer to [www.designlights.org](http://www.designlights.org) Qualified Products List under Family Models for details

## Power Configuration Examples



LOCAL POWER (500PL)  
USING THE LOCAL YOKE (LY) LIGHT HEAD MOUNT



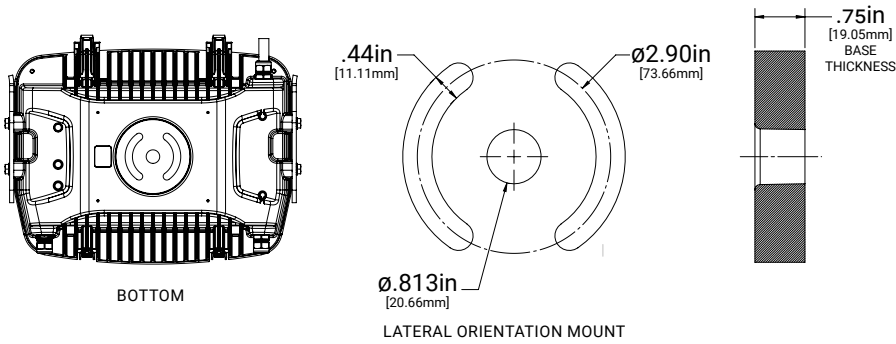
SATELLITE POWER (500PS)  
USING BOTTOM MOUNT YOKE (BY) LIGHT HEAD MOUNT  
AND THE EPHEBUS CATWALK MOUNTING BRACKET (EPH-LS-CAT-P-B-U-B)



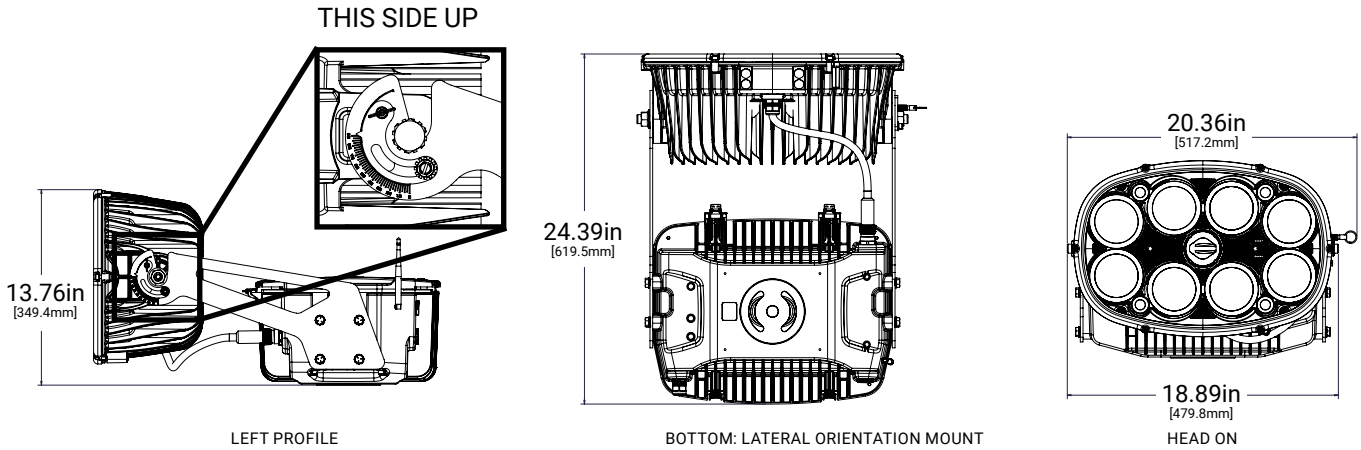
LOCAL POWER (500PL)  
AND THE LOCAL PENDANT (LP) LIGHT HEAD MOUNT

Dimensional and Mounting Details

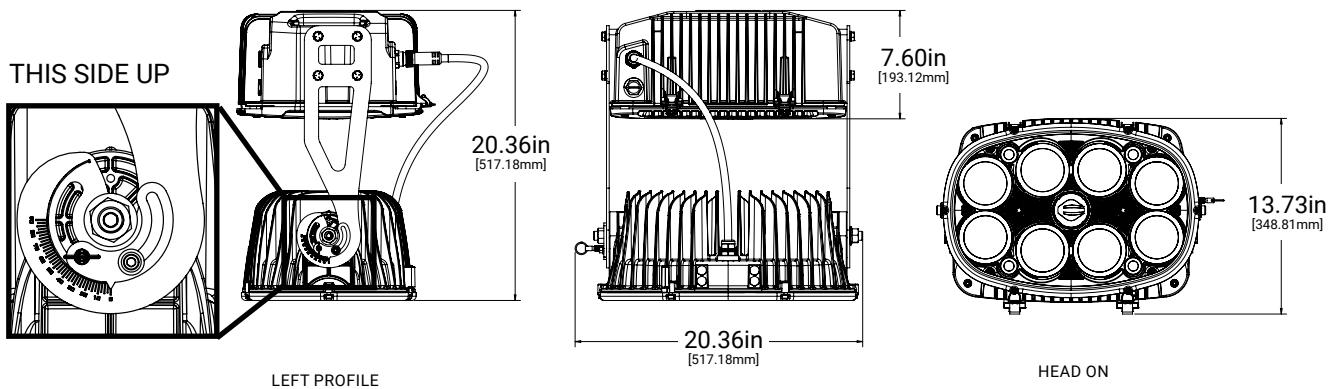
MOUNTING: DRIVER BOX



MOUNTING CONFIGURATION: LOCAL YOKE

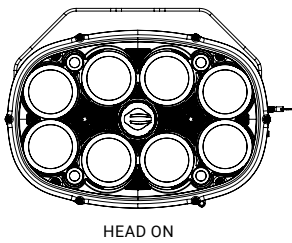
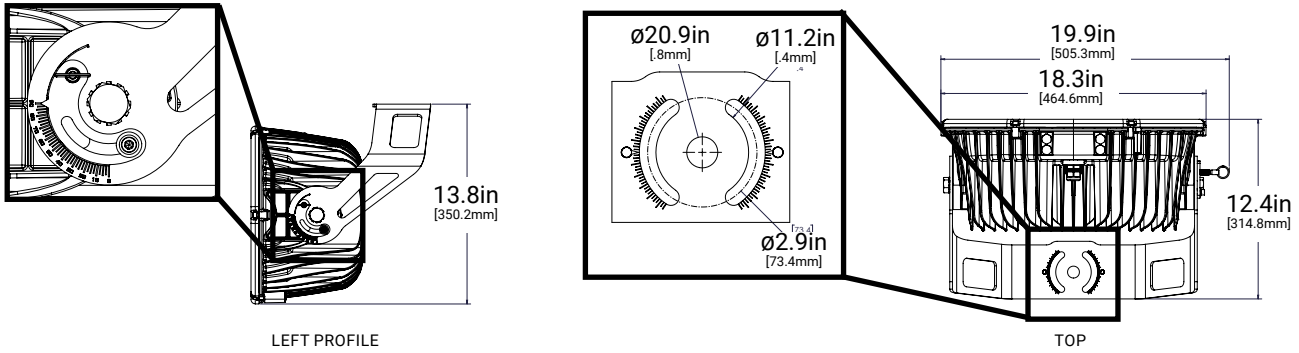


MOUNTING CONFIGURATION: LOCAL PENDANT

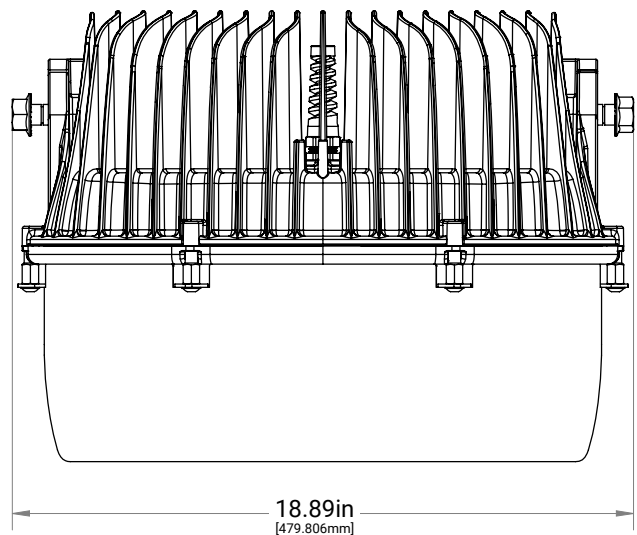
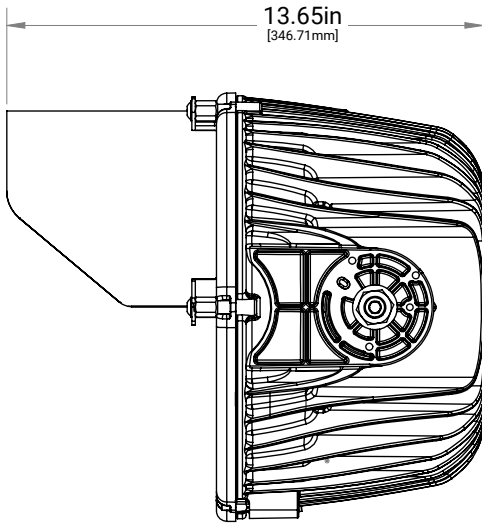


## Dimensional and Mounting Details

### MOUNTING CONFIGURATION: Bottom Mount Yoke



### VHE Visor Option Dimensional Details



## Performance Data<sup>1</sup>

	LUMASPORT 8 PRISM (500W <sup>2</sup> )
Nominal Power <sup>3</sup>	500W
Input Voltage (Low Voltage)	120 - 277VAC
Input Voltage (High Voltage)	347 - 480VAC
Distribution (NEMA)	2S, 4S, 5S, 7F
Dimming Range	DIM TO OFF, 10%-100%
Operating Temperature Range	-40°C to +40°C
Usage	INDOOR, OUTDOOR <sup>4</sup>
Mounting Options	LOCAL YOKE; LOCAL PENDANT; BOTTOM MOUNT YOKE FOR CATWALK BRACKET
Electrical Certifications	FCC, UL8750, UL1598
Environmental Certifications	IP66, NEMA4X <sup>5</sup>
Vibration	ANSI C136.31-2010 1.5G <sup>6</sup>
Surge	10kV
Effective Projected Area (EPA)	1.8 (sq. ft.)
Effective Projected Area (EPA) with Visor (VHE) <sup>7</sup>	1.8 - 2.5 (sq. ft.)
Approximate Weight <sup>8</sup>	72.5 LBS

### NOTES:

- (1) Specifications are subject to change without notice.
- (2) Refer to Optical Performance Data.
- (3) Values are +/- 10% when fixture is operated at 25°C ambient
- (4) When driver box is mounted in upright position.
- (5) Light head meets NEMA4X Certification
- (6) LumaSport 8 with Visors (VHE) qualifies for ANSI C136, 31-2010 1.5G
- (7) EPA may vary depending on the aiming angle of the fixture.
- (8) Weight may vary depending on mounting bracket, VHE Visor option, light head and driver box selection.

## Electrical Performance Data

Product	Input Voltage Range (VAC)	Input Power (W)	Peak Inrush (A)	Power Factor (@Max Load)	Inrush period (ms)
EPH-LS-500 (LV)	120	552	34.40	1	0.04
	277	533	47.50	0.99	0.02
EPH-LS-500 (HV)	347	531	16.79	0.99	0.24
	480	528	22.56	0.97	0.22

### NOTES:

- (1) Values are +/- 10% when fixture is operated at 25°C ambient

## Optical Performance Data

LUMASPORT 8 PRISM (500W) Lumen Outputs <sup>1</sup>	
LED TYPE	LUMENS
EPHESUS RED	9266
RED/ORANGE	10063
ORANGE	11658
YELLOW	17240
LIME GREEN	9827
EPHESUS GREEN	7974
CYAN	8353
BLUE	6719
EPHESUS BLUE	1935
PURPLE	11201

### NOTES:

- (1) Values are +/- 10% when fixture is operated at 25°C ambient

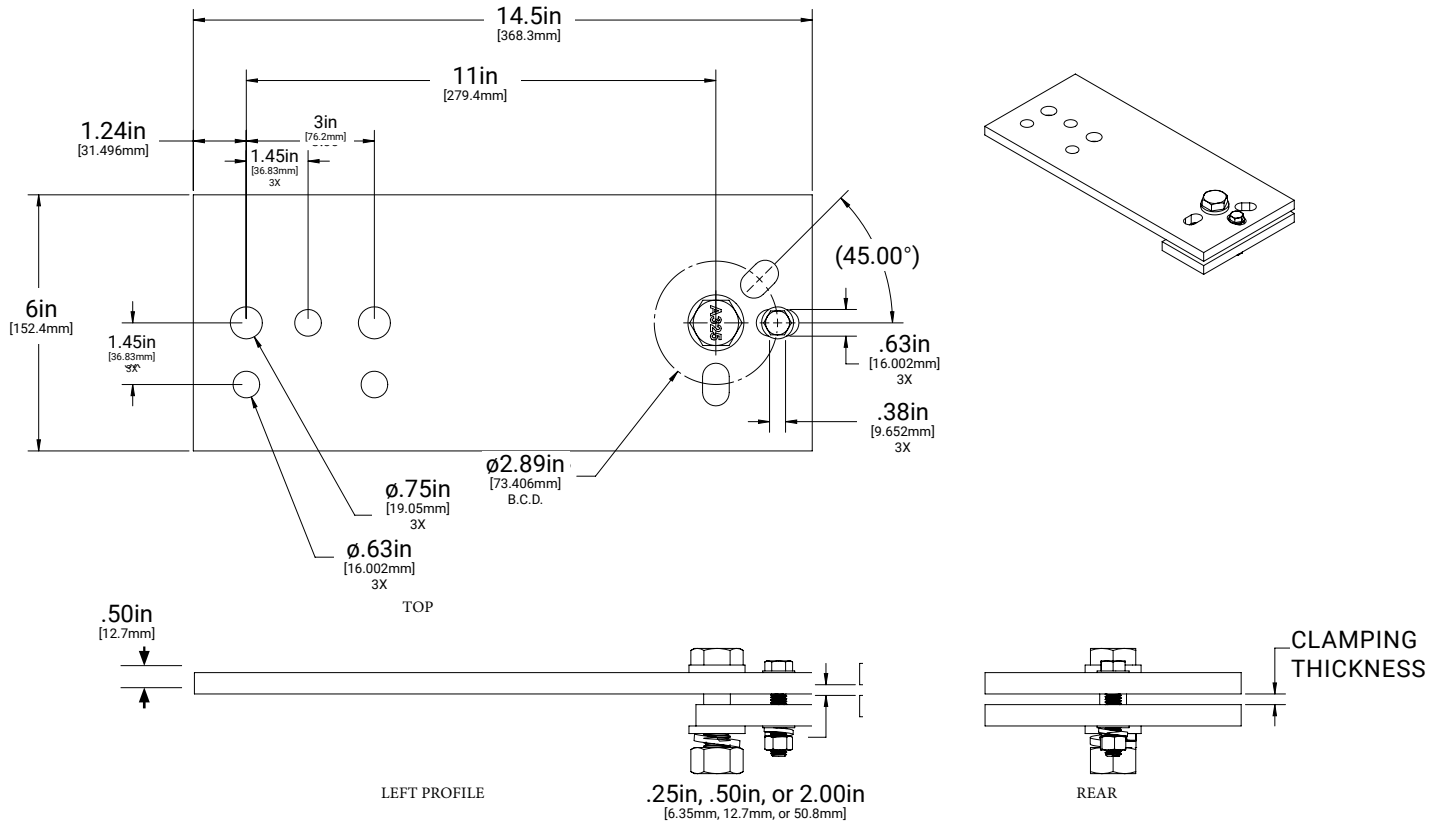
## Ordering Information for Accessories

NOTE: A complete accessory order requires a selection entry for **Brand, Accessory, Option**.

SAMPLE ORDER NUMBER: **EPH-HRDM34-025**

Brand	Accessory	Option	Intended Use
EPH = Ephesus	<b>EXTPLT</b> = Extension Plate <sup>1</sup>	<b>025</b> = .25in <b>050</b> = .5in <b>200</b> = 2.0in	Extension Plate Kit to mount to structures .25in, .5in, or 2.00in thick. Designed to be used with the <b>LUMASPORT 8</b> , <b>LUMADAPT 8</b> , <b>LUMASPORT 8 PRISM</b> luminaires only.
	<b>DVGBRD</b> = Diving Board <sup>2</sup>		Diving Board to mount to 2in x 4in steel cross arms. Designed to be used with the <b>LUMASPORT 8</b> , <b>LUMASPORT 16</b> , <b>LUMASPORT 8 PRISM</b> & <b>LUMASPORT 16 PRISM</b> luminaires only.
	<b>HRDM58</b> = Mounting Hardware 5/8in diameter	<b>050</b> = .375in - .50in Range of Clamping Thickness <sup>3</sup> <b>200</b> = 2in Clamping Thickness <sup>3</sup>	<b>HRDM58-050</b> : .375-.50in clamping thickness, Use for Extension Plate (EXTPLT) or other flat surfaces drilled for 5/8in hardware <b>HRDM58-200</b> : 2.00in clamping thickness, use for 2in x 4in Cross arms that are drilled for 5/8in hardware
	<b>HRDM34</b> = Mounting Hardware 3/4in diameter	<b>025</b> = .25in <sup>4</sup> <b>075</b> = .75in <sup>4</sup> <b>200</b> = 2in <sup>4</sup>	<b>HRDM34-025</b> : .25-.50in clamping thickness, use for diving board (DVGBRD) or other flat surfaces drilled for 3/4in hardware <b>HRDM34-075</b> : .50-.75in clamping thickness, flat surfaces drilled for 3/4in hardware <b>HRDM34-200</b> : 2.00in clamping thickness, use for 2in x 4in Cross arms that are drilled for 3/4in hardware
	Notes: (1) Additional mounting fastener hardware kit needed to attach a fixture to the <b>EXTPLT</b> = Extension Plate (2) Additional mounting fastener hardware kit needed to attach a fixture to the <b>DVGBRD</b> = Diving Board	Notes: (3) Option only available for use with <b>HRDM58</b> (4) Option only available for use with <b>HRDM34</b>	

## Extension Plate (EXTPLT) Dimension and Part Details:



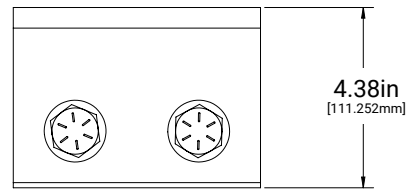
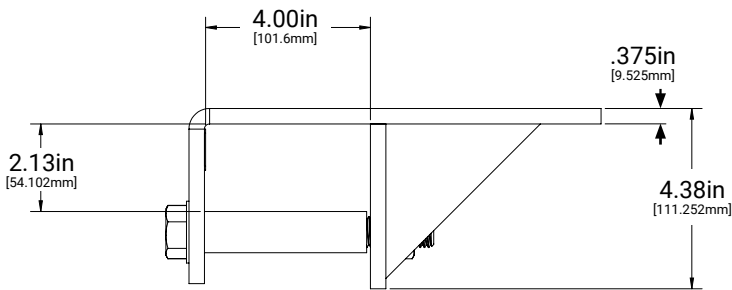
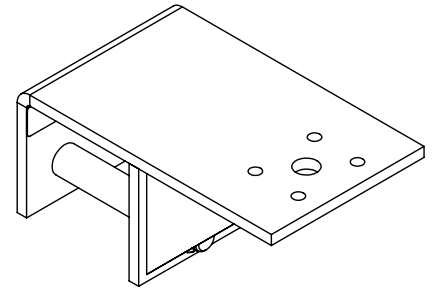
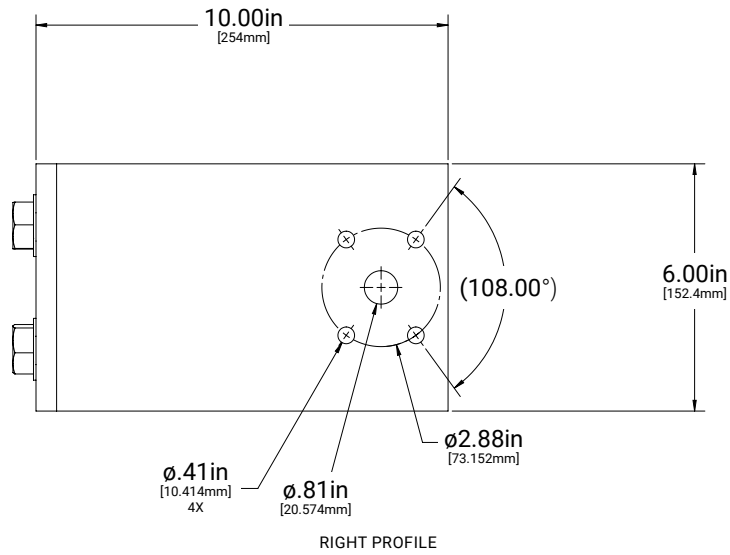
## Extension Plate Data

MODEL #	WEIGHT (LBS)
EXTPLT	14.63
EXTPLT + HRDM58-050	15.28

## Extension Plate Kit Parts

DESCRIPTION	QUANTITY
Extension Plate	1
Washer Plate	1
5/8in Hex Bolt	1
5/8in Washer	2
5/8in-11 Hex Nut	1
5/8in Split Washer	1
3/8in Washer	2
3/8in Hex Bolt	1
3/8in Split Washer	1
3/8in-16 Hex Nut	1

## Diving Board (DVGBRD) Dimension and Part Details:



## Diving Board Data

MODEL #	WEIGHT (LBS)
DVGBRD	15.1
DVGBRD + HRDM34-025	16.1

## Diving Board Parts

DESCRIPTION	QUANTITY
Welded Bracket	1
Bolt Sleeve	2
3/4in-10 X 6in Structural Hex Bolt, Hot Dip Galvanized	2
3/4in Steel Flat Washer, Hot Dip Galvanized	2
3/4in Ext Tooth Washer, Steel, Magni-565 Grey Polycoat	2
3/4in-10 Structural Steel Hex Nut, Hot Dip Galvanized	2
Stainless Shim	1



## HRDM58 Dimension and Part Details:

### HRDM58-050:

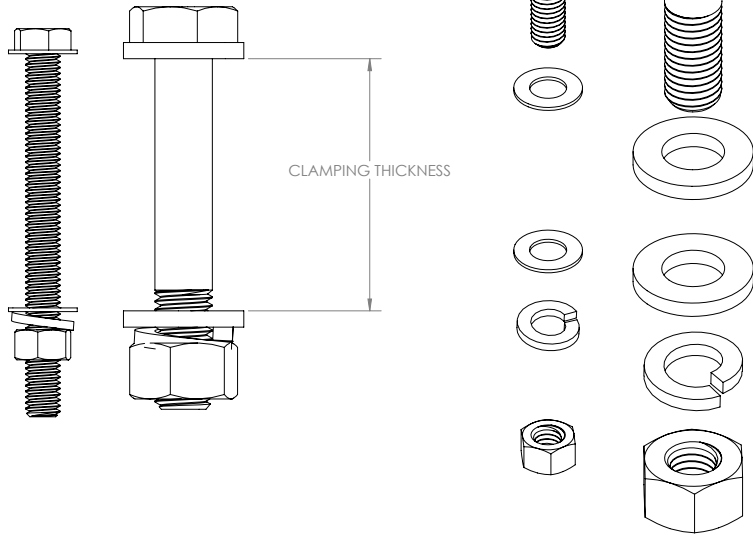
.375-.500in clamping thickness, Use for Extension Plate (EXTPLT) or other flat surfaces drilled for 5/8in hardware

### HRDM58-200:

2.00in clamping thickness, use for 2in x 4in Cross arms that are drilled for 5/8in hardware

## HRDM58 Data

MODEL #	WEIGHT (LBS)
HRDM58-050	.65
HRDM58-200	.84



## HRDM34 Dimension and Part Details:

### HRDM34-025:

.25-.50in clamping thickness, use for diving board (DVGBRD) or other flat surfaces drilled for 3/4in hardware

### HRDM34-075:

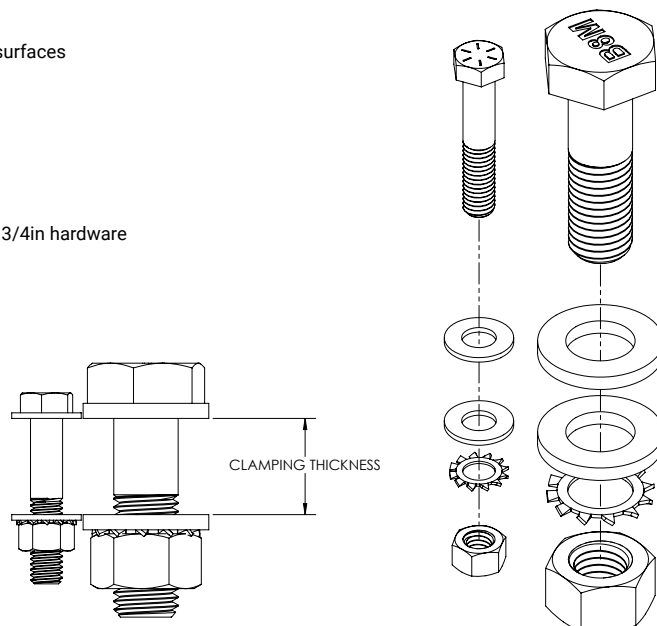
.50-.75in clamping thickness, flat surfaces drilled for 3/4in hardware

### HRDM34-200:

2.00in clamping thickness, use for 2in x 4in Cross arms that are drilled for 3/4in hardware

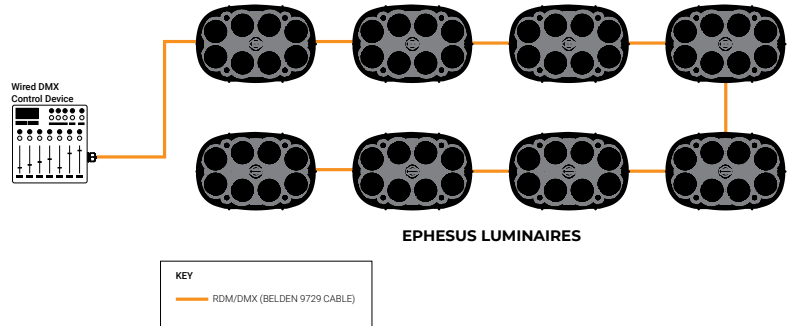
## HRDM34 Data

MODEL #	WEIGHT (LBS)
HRDM34-025	1
HRDM34-075	1.5
HRDM34-200	2



## Example System Topology (Wired DMX Controls)

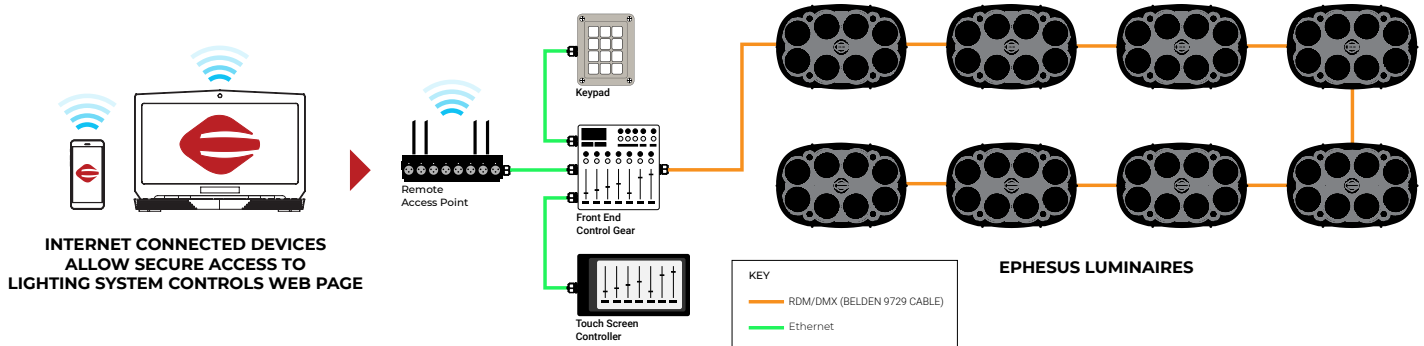
Example system topology showing the LUMASPORT 8 PRISM System in a commonly used wired DMX Control Installation. Refer to the specifications and limitations of your wired DMX control device before installing this configuration.



## Example System Topology (Remote Access Point With Wired DMX Controls)

Example system topology showing the LUMASPORT 8 PRISM System in a commonly used remote access point with wired DMX Control Installation. Refer to the specifications and limitations of your wired DMX control device before installing this configuration. Note: Laptop and mobile device not included. A cellular network connection requires a cellular carrier network plan.

### REMOTE ACCESS POINT TO DMX SYSTEM CONTROLS



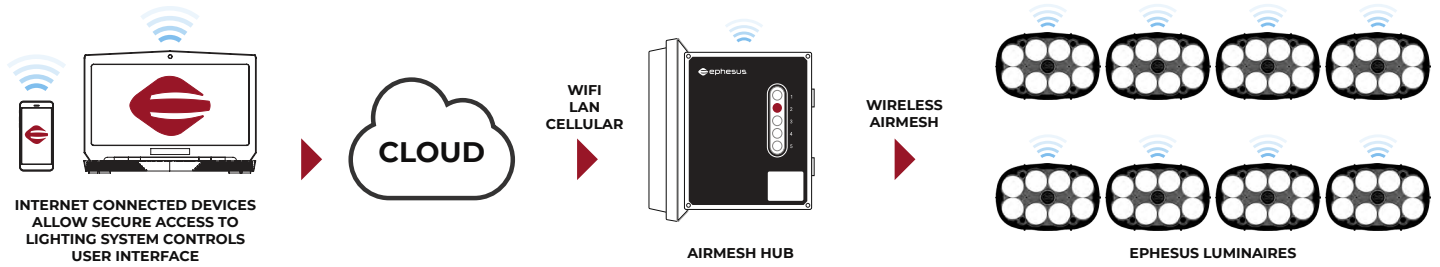
**NOTES:**

Remote Access Point requires either a wired Internet connection at the lighting system site or through a cellular carrier network connection plan.

## Example System Topology (Wireless AirMesh Controls)

Example system topology showing the LUMASPORT 8 PRISM System in a Wireless AirMesh Control Installation.  
Note: Laptop and mobile device not included. A cellular network connection requires a cellular carrier network plan.

### REMOTE ACCESS



### ON SITE ACCESS

