

## DESCRIPTION

The Paralux III Tannenbaum louver offers designers an exciting new appearance for low brightness recessed applications. The luminaire incorporates a unique European louver design featuring low iridescent specular and Tannenbaum aluminum optical surfaces. This louver integrates into the Paralux III 4-3/4" deep para-contoured housing for optimum performance. The Paralux III series is compatible with all of today's popular ceiling systems and is available with a number of options and accessories to application versatility. The Paralux III Tannenbaum louver is a great visual alternative to traditional recessed luminaires and provides efficient, low glare ambient lighting appropriate for most commercial interior environments.

## SPECIFICATION FEATURES

### Construction

4-3/4" deep, para-contoured housing, die formed code gauge, prime cold rolled steel. Die embossed housing has full length die formed stiffeners for added strength. Contoured ballast/wireway cover is easily removed without tools. Die formed captive lampholder bracket fully encloses lampholder wiring permitting easy lampholder replacement. Heavy end plates are securely attached with interlocking tabs and screws. Four auxiliary fixture end suspension points provided. KO's for continuous row wiring. End plates have integral Grid-Lock feature for safety and convenience.

### Electrical\*\*

Ballasts are CBM/ETL Class "P" and are positively secured. 2G11 base lampholders have double-edge wiping action pressure lock contacts with vertically oriented lamp support clips. UL/CUL listed. Suitable for damp locations.

### Finish

Lighting grade, baked white enamel finish. Multistage, iron phosphate pretreatment ensures maximum bonding and rust inhibition.

### Hinging/Latching

Positive spring loaded, self locking, steel latches. Safety lock T-hinges allow hinging and latching from either side.

### Louver

Die formed of low iridescent anodized specular and Tannenbaum aluminum. Finish is anodic oxide coating. Accurate precision contours are held in place with interlocking feature. Truss cut mitered corners. Black reveal with integral mechanical light seal around entire perimeter of louver. Louver protected from construction contaminants by poly cover.

### Compliance

Options to meet Buy American Act requirements.



**2EP3GAX**  
**2U6T8**  
**2U1-5/8, 3U1-5/8**

**18 Cell**

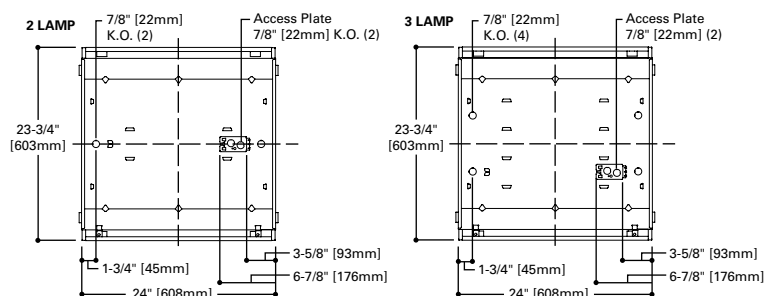
**2' X 2' PARABOLIC  
2 OR 3 LAMP  
TANNENBAUM LOUVER**

Paralux III  
Recessed Static or Air  
Supply Troffer

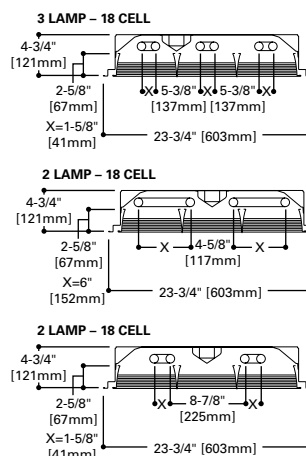
**TANNENBAUM™**



## MOUNTING DATA



## LAMP CONFIGURATIONS



## CEILING COMPATIBILITY

G	G	G	F	MZ	Ceiling Type	Trim Type
Grid/Lay-in Standard	Concealed T	Slot Grid	Aluminum Flange Trim With Supporting Swing Gates	Modular Trim With Supporting Swing Gates	Exposed Grid	G
					Concealed T	G
					Slot Grid	G
					Flange	F
					Concealed "T" or "Z"	MZ
					Metal Pan	MZ
					(Verify compatibility/ consult factory.)	

## ENERGY DATA

Input Watts:  
**EB Ballast & STD Lamps**  
2U6T8 (61), 2U1-5/8 (61), 3U1-5/8 (91)

\*\*Reference the lamp/ballast data in the Technical Section for specific lamp/ballast requirements.

**LINEAR DISCONNECT**

Designed to provide safe and convenient means of disconnecting power

## ORDERING INFORMATION

SAMPLE NUMBER: 2EP3GAX-3U15/8ST36-120V-EB51-U

<b>Domestic Preferences</b> <sup>(11)</sup> [Blank]=Standard BAA=Buy American Act	<b>Number of Lamps</b> 2=2 Lamps 3=3 Lamps <sup>(3)</sup>	<b>Voltage</b> <sup>(4)</sup> 120V=120 Volt 277V=277 Volt 347V=347 Volt UNV=Universal Voltage 120-277 <sup>(5)</sup>	<b>Ballast Type</b> EB8 = T8 Electronic Start. Total Harmonic Distortion < 10% No. of Ballast 1, 2 or 3 EB8 /PLUS= T8 Electronic Start. Total Harmonic Distortion < 10% High Ballast Factor >1.15 No. of Ballast 1, 2 or 3 ER8 =T8 Electronic Program Rapid Start. Total Harmonic Distortion < 10% No. of Ballast 1, 2 or 3	<b>Options</b> PAF=Painted After Fabrication REP=Riveted Endplates <b>Packaging</b> U=Unit Pack PAL=Job Pack, out of carton PALC=Job Pack, in carton
<b>Rating</b> Blank=Standard ATW-SW4=Chicago Rated	<b>Wattage (Length)</b> U6T8=32W T8 (24") U15/8=31W T8 (24")	<b>Options</b> GL=Single Element Fuse GM=Double Element Fuse WTR=White Reveal <b>Flex</b> =Flex Installed (Reference Flex ordering information) EL=Emergency Installed <sup>(6), (10)</sup>		
<b>HR</b> =Heat Removal <sup>(1)</sup>	<b>Louver Color/Type</b> ST=Silver Tannenbaum			
<b>Width</b> 2=2' Width	<b>Cell Configuration</b> 36=3 Rows of 6, 18 Cell			
<b>EP</b> =Paralux Louver	<b>Option – Aluminum Flange Trim</b> <sup>(8)</sup> Blank=SW (Single White) Type Color 'S' Single 'N' Natural 'R' In Row 'W' White 'E' End of Row			
<b>3=3" Louver Depth</b>				
<b>Trim Type</b> G=Grid/Lay-in (Standard) G=Concealed T/Slot Grid <sup>(7)</sup> F=Aluminum Flange Trim <sup>(8)</sup> MZ=Modular Trim				
<b>AX</b> =Air Supply Floating Louver <b>X</b> =Blank Side/Floating Louver - Non-Air Supply (Omit A) <b>AVX</b> =Air Supply Floating Louver with Directional Air Vane (Add V)				

ACCESSORIES <sup>(12)</sup>EQ-CLIP-U=T-BAR Safety Earthquake Clips <sup>(2)</sup>

**NOTES:** <sup>(1)</sup> Integral end plate grid lock feature not available in heat removal. <sup>(2)</sup> An EQ Grid Clip is recommended for all 9/16" ceiling systems. Four required per fixture. <sup>(3)</sup> Standard off-center ballast on 3-lamp fixtures. <sup>(4)</sup> Products also available in non-US voltages and frequencies for international markets. <sup>(5)</sup> Not available when specifying emergencies, voltage must be specific. <sup>(6)</sup> Fixtures equipped with "EL" option may require a 5-1/2" housing depth. If installing in field, must use low profile battery pack. <sup>(7)</sup> Louver is recessed by 5/16" in Concealed T or Slot Grid T. <sup>(8)</sup> Specify row configuration, type in catalog number when ordering complete fixture. <sup>(10)</sup> Please specify required voltage, 120V or 277V. <sup>(11)</sup> Only product configurations with this designated prefix are built to be compliant with the Buy American Act of 1933 (BAA). Please refer to [DOMESTIC PREFERENCES](#) website for more information. Components shipped separately may be separately analyzed under domestic preference requirements. <sup>(12)</sup> Accessories sold separately will be separately analyzed under domestic preference requirements. Consult factory for further information.

Specifications &amp; dimensions subject to change without notice. Consult your Cooper Lighting Solutions Representative for availability and ordering information.

## SHIPPING DATA

Catalog No.	Wt.
2EP3GAX-2U1-5/8ST36	28 lbs.
2EP3GAX-3U1-5/8ST36	28 lbs.
2EP3GAX-2U6T8ST36	28 lbs.