

Project		Catalog #		Type	
Prepared by		Notes		Date	



WaveLinx Wired

TSE55-B

5.5" LCD Color Touchscreen

Typical Applications

Office • Education • Healthcare • Hospitality • Retail

Interactive Menu

- Order Information page 2
- Additional Resources page 3
- Wiring Diagrams page 3
- Connected Systems page 5
- Product Warranty

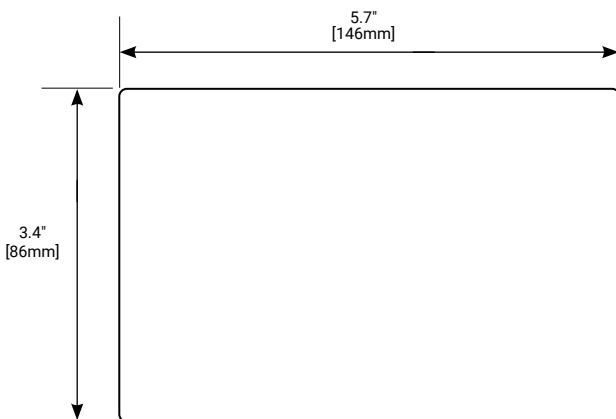
Product Features



Top Product Features

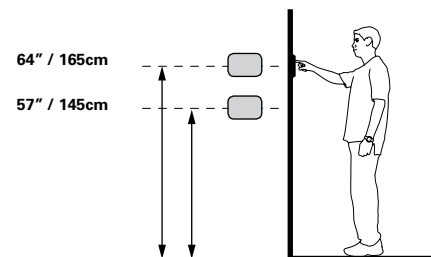
- PoE touchscreen can be installed virtually anywhere
- Customizable graphics
- Password protection capabilities
- Area, Scene, Zone level control with buttons and/or sliders
- Save scene capabilities with password protection
- Color picker for white tuning or DMX color changing

Dimensional and Mounting Details



5.5" touchscreen is installed in a standard single gang box opening, either portrait or landscape.

Scale



additional product diagrams

Order Information

Catalog Number

Catalog Number	Description
912600000524	TSE55-B 5.5" LED color touchscreen, Black

Required Accessories

Catalog Number

Catalog Number	Description
TSI-1-NA	Touchscreen interface accessory

Product Specifications

Key Features

- 5.5 inch (140mm) diagonal backlit capacitive LCD touchscreen
- 1280 X 720 pixel resolution
- Color Depth: 16.7M colours, 450 nits brightness
- Ambient Light sensor
- Fits standard single gang backbox (35mm depth)
- All graphics and buttons can be customized
- Password feature to allow different access levels
- Designed and manufactured to ISO9001:2015 standards
- Portrait or landscape mounting and layout

Functionality

- Scene Selection
- Scene programming
- Channel level indicated with bar graphs and percentage
- Scene and channel naming
- Default screen programming
- Photocell / motion sensor interaction
- Ability to import drawings, customer logos and images as background graphics
- Ability to insert soft buttons for activating scenes and / or channels

Mechanical

Display: High performance HD, IPS 5.5" LCD, 1280 X 720 resolution

Color Depth:

- 16.7M colors, 450 nits brightness

Client Range:

- **Temperature:** +2°C to +40°C
- **Humidity:** +5 to 95% non condensing

Mounting: Do not mount on metal surface

Electrical

Supply:

- PoE 802.3af compliant or via 24-57Vdc power connector on the rear

Power Connection:

- RJ45

Programming:

- Cooper's Touchscreen Designer software via Ethernet connection

Diagnostics:

- network

Memory:

- 1GB DDR3
- 8GB eMMC

Standards/Ratings

- cULus Listed - Energy Management Equipment (UL916)
- FCC Part 15/ECES-003
- Manufactured in an ISO 9001 certified factory
- Meets ASHRAE Standard 90.1 requirements
- Meets CEC Title 24 requirements

Product Safety:

- IEC 60950-1
- UL 60950-1
- EN 60950-1
- CAN/CSA-C22.2 No. 60950-1

Environmental Regulations:

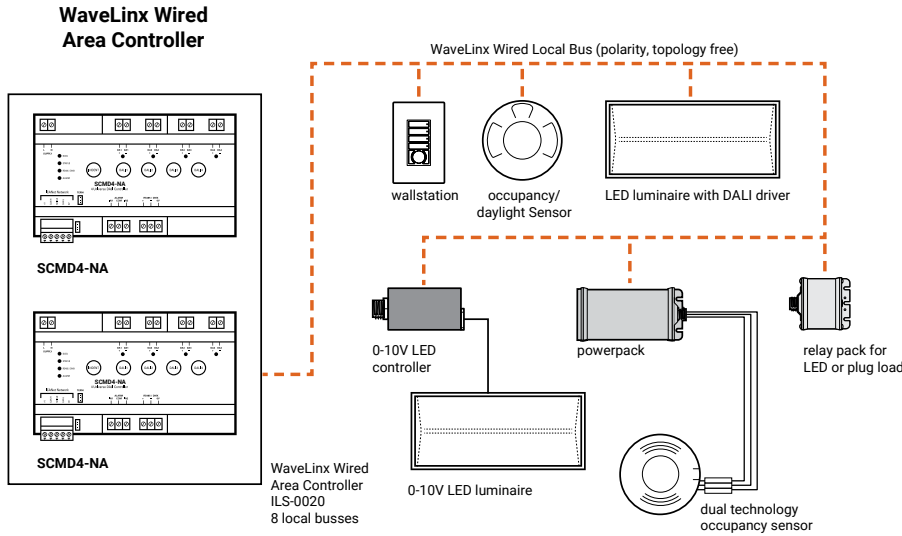
- RoHS Directive 2011/65/EU
- WEEE Directive 2012/19/EU

Warranty

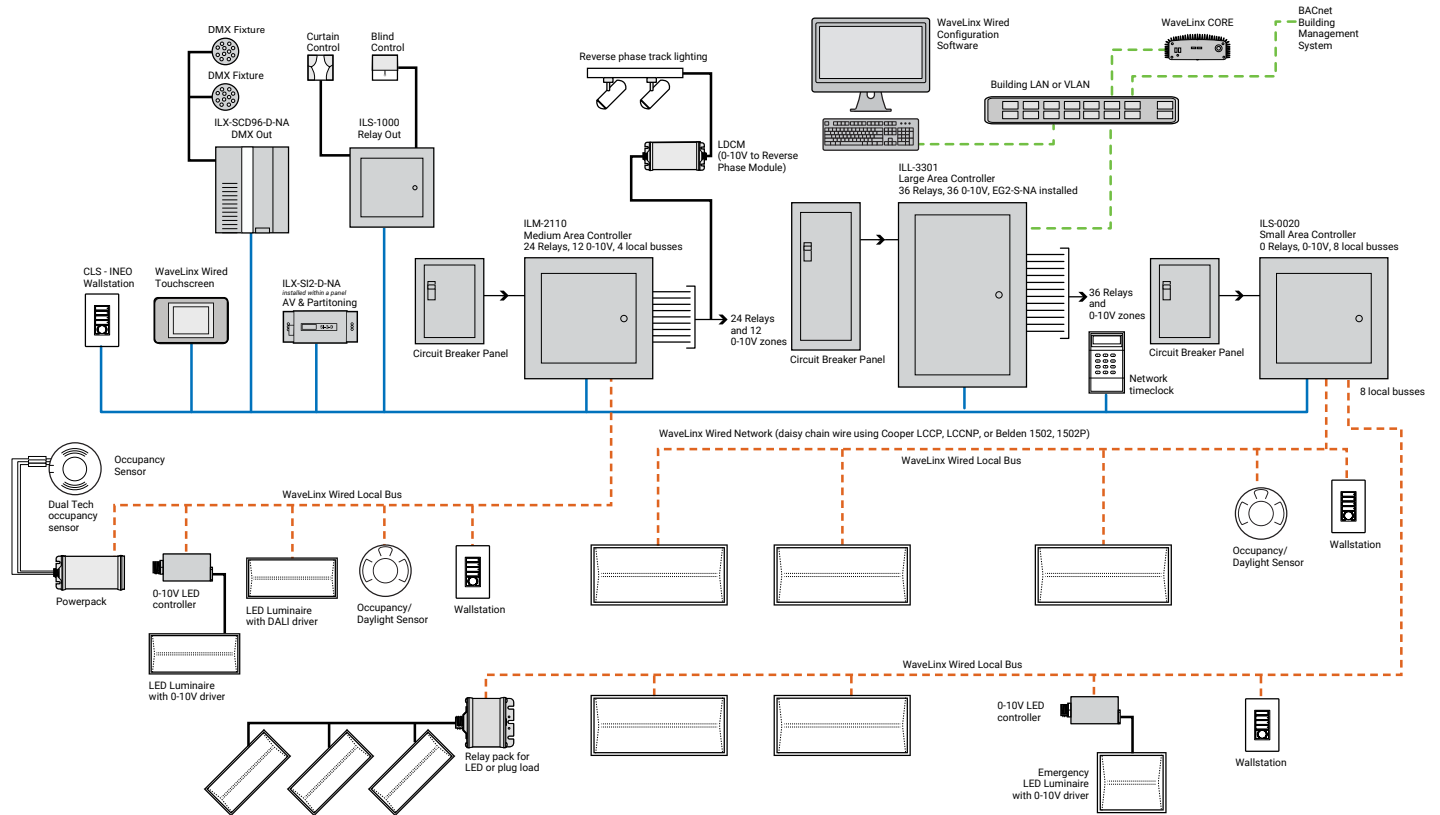
Five year warranty standard

System architecture

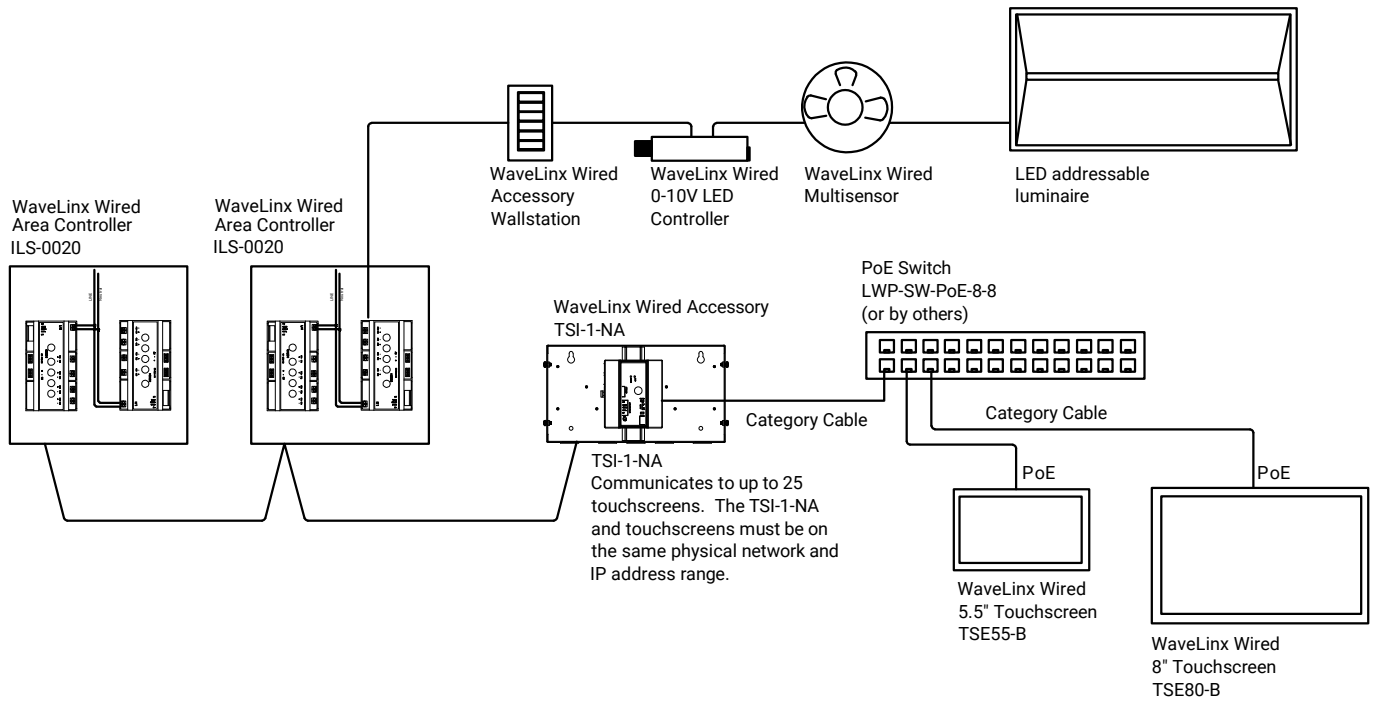
Simple WaveLinx Wired system



Complete WaveLinx Wired system



Typical schematic



Mounting



Images are examples for reference only.
Do not mount on metal surface

Sample System Topology:

This diagram shows the main components of the WaveLinx wired and PRO wireless connected lighting system.

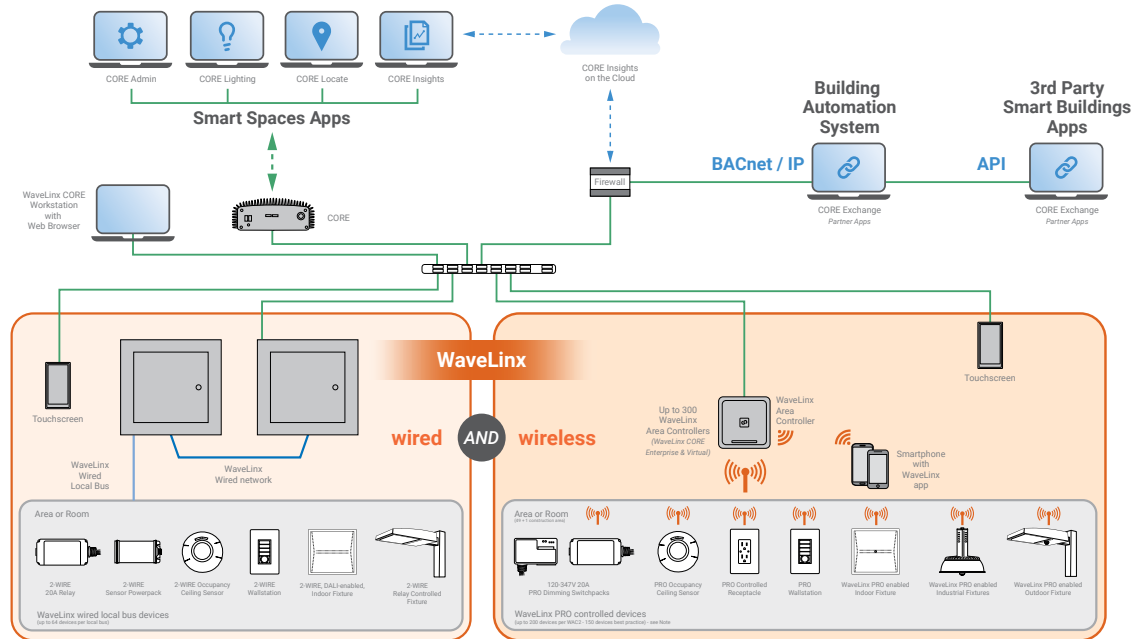
The **WaveLinx PRO wireless system** communicates using wireless mesh technology based on the IEEE 802.15.4 standard. A PoE LAN connection for each WaveLinx Area Controller (WAC) is required for power and data access to the building lighting network.

The **WaveLinx wired system** controls the devices using relay, 0-10V, DMX and the WaveLinx wired digital local bus. The WaveLinx wired system connects to the building LAN using the EG2 module. Each WaveLinx wired area controller communicates on the WaveLinx wired network.

WaveLinx Area Controllers (WAC) and WaveLinx Ethernet Gateways (EG2) communicate with WaveLinx CORE over the Ethernet network.

Please refer to the WaveLinx PRO Wireless Network and IT Guidance Technical Guide and WaveLinx Wired Network and IT Guidance Technical Guide for more information.

[View WaveLinx Network and IT Guidance Technical Guide](#)



Note: Performance based on current generation WaveLinx Area Controller (WAC2)

	WaveLinx wired	WaveLinx PRO/CAT/Panel
WaveLinx CORE		
Connects to WaveLinx CORE (Pro, Enterprise, Virtual)	●	●
# of WAC or EG2-S-NA / # of devices per WaveLinx CORE Pro	2 / 3000	20 / 3000
# of WAC or EG2-S-NA / # of devices per WaveLinx CORE Enterprise	10 / 32,500*	300 / 32,500*
# of WAC or EG2-S-NA / # of devices per WaveLinx CORE Virtual Enterprise	10 / 32,500*	300 / 32,500*
Connecting device	EG2-S-NA	WAC2-POE
CORE Lighting		
Alarms	○	●
Events	●	●
Operate (floorplan control)	●	●
Operate - area control	●	●
Operate - zone control	●	●
Operate - device control	●	●
Scheduling	○	●
Energy Dashboard		●
Occupancy Dashboard		●
CORE Exchange		
BACnet/IP	○	10,000 objects with WaveLinx CORE Pro up to 30,000 with Enterprise/Virtual
Public (REST) API	○	●
OpenADR		●
Demand Response		●
CORE Admin		
Manage Users	●	●
Manage roles	●	●
Manage clients	●	●
Manage licenses	●	●
System settings (backup/restore, network etc)	●	●
CORE Insights		
Occupancy Trends and Comparison		●
Average Occupancy		●
Occupancy on Floor Plan		●
Generate and Export Reports to pdf		●
Hierarchical Navigation		●
Quick Search		●
Department Filter		●
Historical View		●
Popular Spaces		●

* For larger number of gateways and devices, please contact Cooper Lighting Solutions Sales representatives. Recommend designing the system at 70-80% of maximum capacity. Specifications based on WAC2-POE. The number of gateways and devices mentioned above are the total for a single system or the combination (Wired + Wireless) that can be used with a server.

● = All features ○ = Subset of features

Control Systems

- WaveLinx