

## Installation Instructions – Corelite SQ4 Recessed Grid -T1/T2

### **WARNING**



**Risk of Fire and Electric Shock-** Make certain power is OFF before starting installation or attempting any maintenance. Disconnect power at fuse or circuit breaker.

**Risk of Fire-** Minimum 90°C supply conductors.



**Risk of Fire and Electric Shock-** Installation and maintenance of this product must be performed by a qualified electrician. This product must be installed in accordance with the applicable installation code by a person familiar with the construction and operation of the product and hazards involved.



**Risk of Burn-** Disconnect power and allow fixture to cool before handling or servicing.



**Risk of Personal Injury-** Due to sharp edges, handle with care. Use personal protective equipment.

Failure to comply with these instructions may result in death, serious bodily injury and property damage.

**DISCLAIMER OF LIABILITY:** Cooper Lighting Solutions assumes no liability for damages or losses of any kind that may arise from the improper, careless, or negligent handling and installation of this product.

**IMPORTANT:** Read carefully before installing fixture. Retain for future reference.

**NOTICE:** Green ground screw provided in proper location. Do not relocate.

**NOTICE:** Fixture may become damaged and/or unstable if not installed properly.


**NOTICE:** Specifications and dimensions subject to change without notice.

**ATTENTION Receiving Department:** Note actual fixture description of any shortage or noticeable damage on delivery receipt. File claim for common carrier (LTL) directly with carrier. Claims for concealed damage must be filed within 15 days of delivery. All damaged material, complete with original packing must be retained.

Installation Instructions

Corelite SQ4R

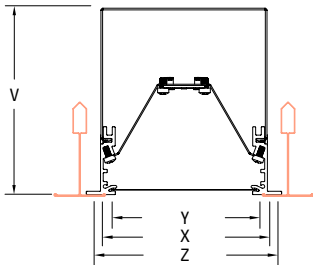
Individual and Continuous Luminaires  
For Installation in Grid Ceilings

 Before starting any work, ensure that all power sources are turned off. All work must meet local/national electrical codes and be preformed by a certified electrician.

Parts List

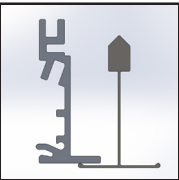
- Luminaire
  - Grid Bracket/Joiner (pre-installed in fixture)
  - Access Plate (pre-installed in housing)
  - Support Wire (by others)
  - Shielded Cable (by others)
- Push-in Quick Connects or wire nuts
  - Alignment Pins (pre-installed in fixture) (Continuous runs only)
  - #8-32 2-1/2" Bolts and Nuts (Continuous runs only)
  - 9/64" Allen Wrench (by others)
  - 11/32" Flexible Nut Driver (by others)
  - #2 Phillips Screwdriver (by others)

Cross Section and Grid Spacing Details

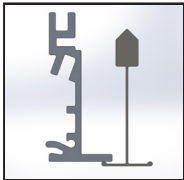


SQ4 Cross Section Dimensions				
All Grid	V (Flush)	X	Y	Z
SQ	4.506	4.000	3.308	5.000

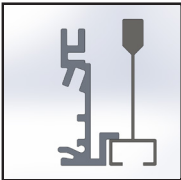
Mounting Information - Extruded Trim Flange Details - Refer to submittal drawings for detailed flange information



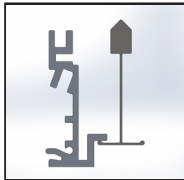
T1  
15/16"  
T-Grid



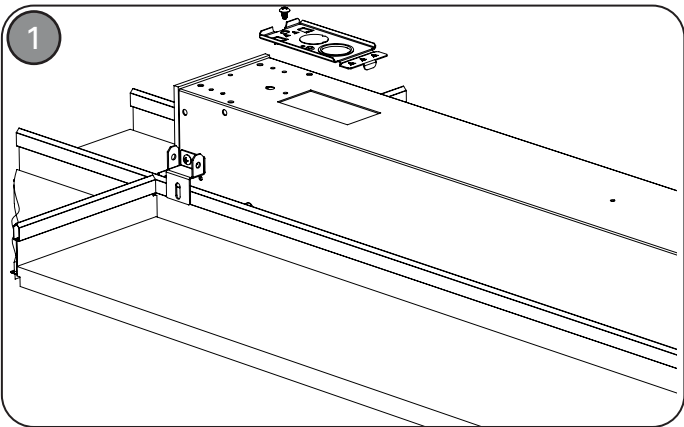
T9  
9/16"  
T-Grid



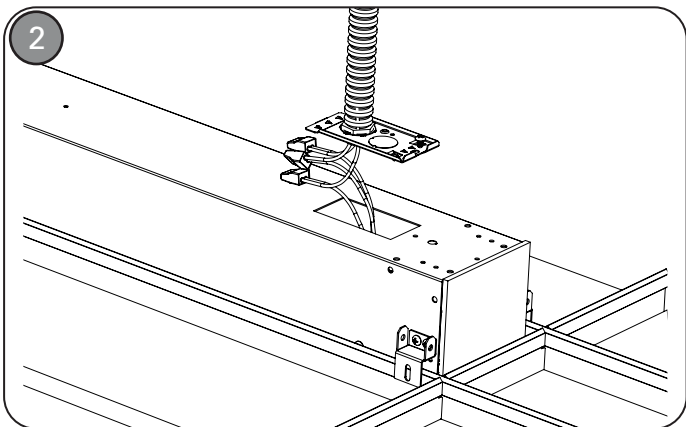
TS  
Slotted  
T-Grid



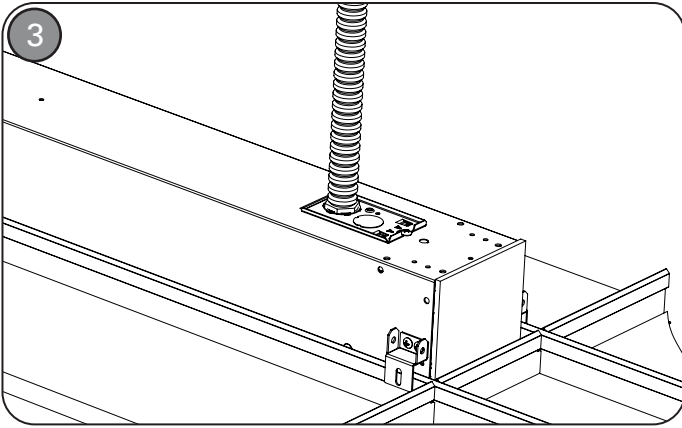
TS  
9/16" Tegular  
T-Grid



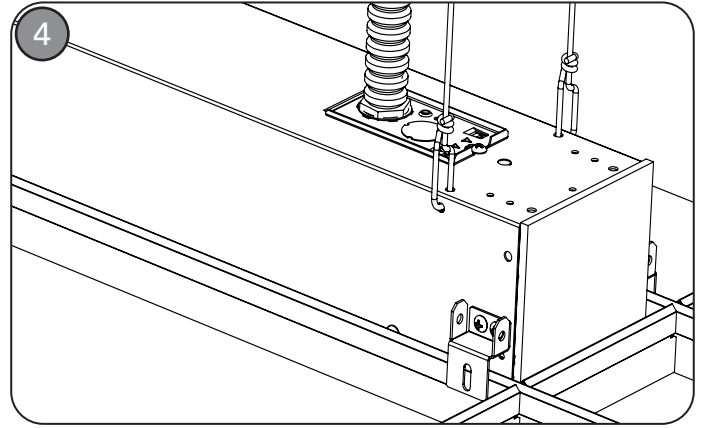
Prepare grid width spacing according to chart above and local building code. Install fixture housing into grid. Ensure Grid brackets secure over grid and fixture is resting on grid tee. Unscrew access plate and slide to remove as shown.



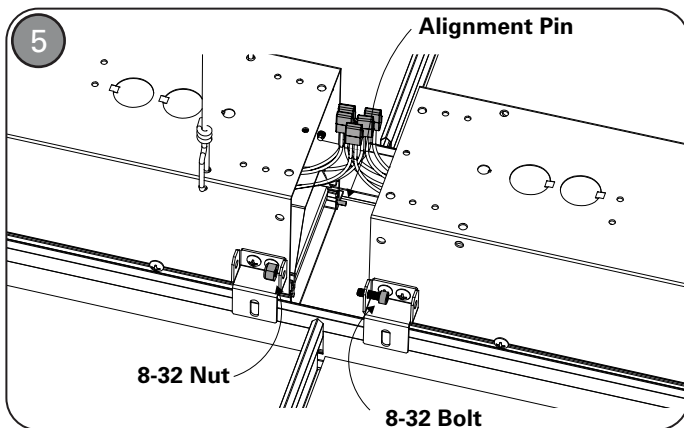
Connect shielded cable to access plate. Connect electrical wiring as required using provided push-in connector. Ensure wires are fully secure in connectors.



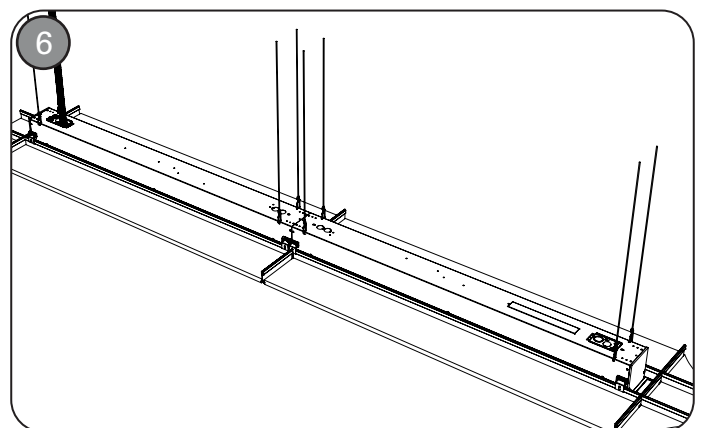
Reattach access plate by sliding plate back into housing as shown and secure access plate by re-installing screw.



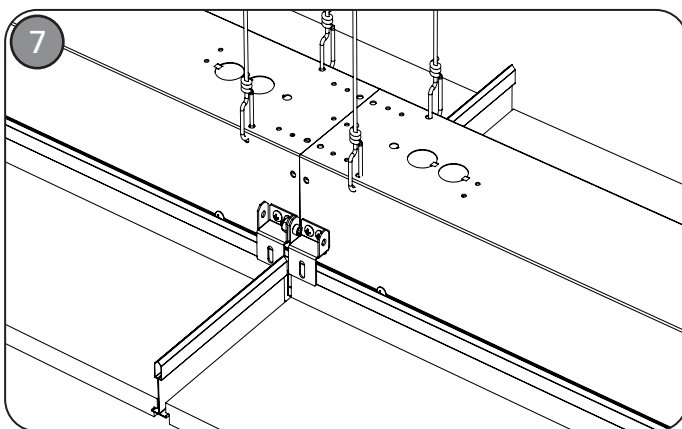
Secure fixture at both ends using support wire according to local building codes (not supplied).



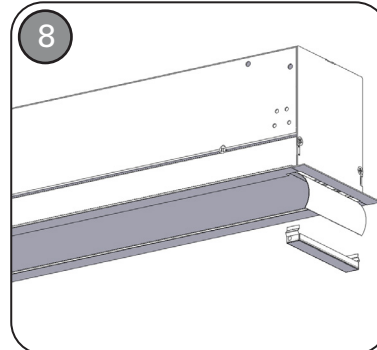
FOR CONTINUOUS RUNS: Connect through wires. Tuck wiring into fixture and push together ensuring alignment pins are properly connected into mating features of the next fixture. Secure run using #8-32 bolts and nuts on each side of fixture through grid brackets.



FOR CONTINUOUS RUNS: Secure next fixture in row using support wires on both sides of fixture. OPTIONAL STEP: Secure fixture to grid using #8 screws through grid bracket. Required for seismic installations. Repeat steps 5-6 as necessary.



Installation completed.



**IMPORTANT:** If conditions are dusty/dirty, recommended practice is to keep lens roll(s) in plastic packaging and install once conditions are clean. Install roll lens using clean work gloves.

**IMPORTANT:** Energize fixture to test LEDs and confirm they are all lit before beginning Roll Lens install. Support the roll lens at one end of fixture (as shown) while another person pulls lens through.

Support the roll lens at one end of fixture while another person pulls lens through.

**IMPORTANT:** Ends of lenses should be within 1/2" of each end of fixture. Trim lens where necessary. DO NOT UNDER-CUT.

Once roll lens is installed. Insert lens cover clip into fixture so that bottom surface of lens cover is flush and the gap between the lens and the end of fixture is covered.



## Warranties and Limitation of Liability

Please refer to [www.cooperlighting.com/global/warranty](http://www.cooperlighting.com/global/warranty) for our terms and conditions.

## Garanties et limitation de responsabilité

Veuillez consulter le site [www.cooperlighting.com/global/warranty](http://www.cooperlighting.com/global/warranty) pour obtenir les conditions générales.

## Garantías y Limitación de Responsabilidad

Visite [www.cooperlighting.com/global/warranty](http://www.cooperlighting.com/global/warranty) para conocer nuestros términos y condiciones.