

Project		Catalog #		Type	
Prepared by		Notes		Date	



Fail-Safe FVS4

High Abuse / Vandal Resistant
4" Wide / 3.75" Deep
2', 3', 4', 8' Lengths
Polycarbonate Lens
Surface, Ceiling or Wall

Typical Applications:

Vandal Resistant • Schools • Dormitories • Hallways • Locker Rooms • Showers
• Canopies • Public Spaces • Maintenance Facilities • Mezzanines • Stairwells •
Restrooms • Storage Facilities • Behavioral Health

Interactive Menu

- Order Information [page 2](#)
- Product Specifications [page 4](#)
- Product Warranty

Top Product Features

- Cold-rolled steel or stainless steel housing available
- 4" nominal width, 3.75" depth - 2', 3', 4', and 8' lengths
- Damp location standard; wet location under covered ceiling available
- Continuous row utilizing end knock-outs
- 16 ga. steel housing (FVSP) for durability. 18 ga. steel FVSM standard
- Internal occupancy sensor available, behind the lens
- Opal smooth or clear prismatic polycarbonate lens. Lifetime lens warranty. IK10 impact resistance rating.
- Damp location standard; wet location under covered ceiling available
- Options to meet Buy American Act requirements
- **Ligature resistant**; ceiling mount
- 10-Day Quick Spec available. Ship 10 days from receipt of PO

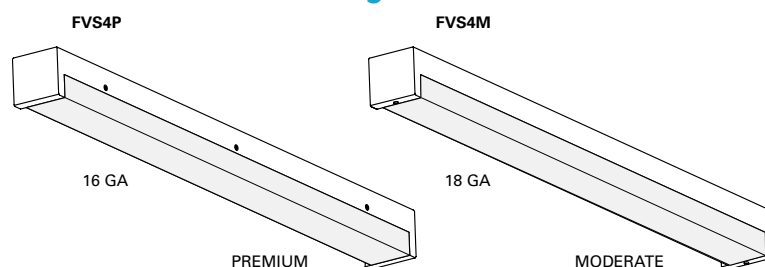
Product Certification



Product Features



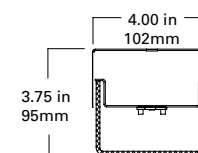
Dimensional and Mounting Details



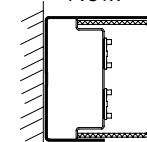
FVS4P	
Length	# Screws each side
2'	2
3'	2
4'	3
8'	5

Housing	FVS4P	FVS4M
	16GA Steel	18GA Steel
Listing	UL Damp, Wet Optional	UL Damp, Wet Optional
Construction	Screws along fixture edge	Set Screws on Endcaps

CEILING or WALL MOUNT
FVS4



WALL MOUNT
FVS4W



[additional product diagrams](#)

Order Information

SAMPLE NUMBER: FVS4WM-8-LD4-2STD-35-UNV-OPL-EDC1-EL7W

SAMPLE NUMBER: FVS4P-4-LD4-2STD-30-120-P187-EDC1-OS1-WL

10-DAY QUICK SPEC SAMPLE NUMBER: QS-FVS4M-4-LD4-1HI-35-UNV-P125-EDC1

Gray bar denotes available with 10-Day Quick Spec

Domestic Preferences ⁽¹⁾	Product Family		Length	LED	No. of LEDs	Illumination Level
[Blank] =Standard BAA =Buy American Act	FVS4 =High Abuse 4" Wide Surface Luminaire QS-FVS4 =High Abuse 4" Wide Surface Luminaire, Quick Spec ⁽⁵⁾ FVS4W =High Abuse 4" Wide Surface Wall Mount Luminaire	M =Moderate P =Premium	2 =2' length ^{(3),(4)} 3 =3' length 4 =4' length 8 =8' length	LD4 =Linear LED, Version 4	1 =1 row LED module in X-section 2 =2 rows LED module in X-section ^{(5),(6)}	LO =Low STD =Standard HI =High
Notes (1) Only product configurations with this designated prefix are built to be compliant with the Buy American Act of 1933 (BAA). Please refer to DOMESTIC.PREFERENCES website for more information. Components shipped separately may be separately analyzed under domestic preference requirements.	Notes (2) 10 day ship, from receipt of clean PO to ship date. 25 unit maximum per PO. QS available only with shaded options. EL14W only available with QS as 4ft length with 1LO, 1STD, 1HI.		Notes (3) 2HI with two circuits not available in 2ft length. (4) 2' length fixture with two circuits and OS1 or OS2 is not available.		Notes (5) Up to 1HI only with Emergency Battery Pack. 1LO, 1STD, 1HI available with EL7W and EL14W. 2 LED cross-section not available. (6) 2HI with two circuits not available in 2ft length.	

Color Temperature	Voltage	Lens	Driver	Options	Finish
30 =3000K 35 =3500K 40 =4000K 50 =5000K	120 =120 Volt 277 =277 Volt UNV =120-277 Volt	P125 =.125" Clear polycarbonate prismatic lens P187 =.187" Clear polycarbonate prismatic lens OPL =.125" Polycarbonate smooth opal lens	EDC1 =Electronic driver, Non-Dimming, 1 circuit EDC2 =Electronic driver, Non-Dimming, 2 circuits EDD1 =Electronic driver, Dimming 10%, 1 circuit EDD2 =Electronic driver, Dimming 10%, 2 circuits ED1D1 =Electronic driver, Dimming 1%, 1 circuit ED1D2 =Electronic driver, Dimming 1%, 2 circuits	EL7W =7 watt EM Pack ^{(7),(8)} EL14W =14 watt EM Pack ^{(7),(8)} SHP =Stainless steel, painted housing SHB =Stainless steel, brushed housing OS1 =Internal Occupancy Sensor (behind lens), connected to one LED module. Specify 120 or 277 voltage. ^{(9),(10)} OS2 =Internal Occupancy Sensor (behind lens), connected to two LED modules. Specify 120 or 277 voltage. ^{(9),(10)} WL =Wet location, listed under covered ceiling for FVS4P and FVS4WM. WL not available on FVS4WP or FVS4WM. 90 =90CRI (not available in 3ft length).	Standard Colors [Blank] =Matte White AM =Antimicrobial Matte White GW =Gloss White DP =Dark Platinum, Satin Finish BK =Black, Satin Finish BZ =Bronze Architectural Colors TCB =Terra Cotta Brick MRR =Merlot Red PMK =Pumpkin GLD =Goldenrod SGG =Sage Green EVG =Evergreen CBL =Coastal Blue NTB =Night Blue UMB =Ultramarine Blue PPV =Purple Violet NTN =Neutral Tan DBG =Dark Beige CRM =Cream SLG =Silver Grey OLG =Olive Green MHB =Mahogany Brown RALxxxx =RAL Number Color ⁽⁸⁾
				Notes (7) Up to 1HI only with Emergency Battery Pack. 1LO, 1STD, 1HI available with EL7W and EL14W. 2 LED cross-section not available. (8) EL7W not available in 2ft length. EL14W not available in 2ft or 3ft length. (9) OS1 and OS2 require 120 or 277 to be specified in the ordering logic. (10) 2' length fixture with two circuits and OS1 or OS2 is not available.	Notes (11) Replace XXXX with unique 4 digit RAL number. Please contact Fail-Safe Tech for a list of additional finish swatches.

Fail-Safe Standard Colors

Gloss White (GW)	Matte White (BLANK)	Matte White Anti-microbial (AM)
Black (BK)	Dark Platinum (DP)	Bronze (BZ)

Fail-Safe Architectural Colors

Terra Cotta Brick (TCB) RAL 3020	Merlot Red (MRR) RAL 3005	Pumpkin (PMK) RAL 2004	Goldenrod (GLD) RAL 1003	Sage Green (SGG) RAL 6019	Evergreen (EVG) RAL 6001	Coastal Blue (CBL) RAL 5015	Night Blue (NTB) RAL 5022
Ultramarine Blue (UMB) RAL 5002	Purple Violet (PPV) RAL 4007	Neutral Tan (NTN) RAL 7032	Dark Beige (DBG) RAL 7006	Cream (CRM) RAL 9001	Silver Gray (SLG) RAL 7001	Olive Green (OLG) RAL 6003	Mahogany Brown (MHB) RAL 8016

Nominal Input Watts

[View IES files](#)

LENGTH	# Modules in Cross-Section	Illumination Level	Nominal Input Watts	Color Temp	LENS P125 Nominal Delivered Lumens	LENS P187 Nominal Delivered Lumens	LENS OPL Nominal Delivered Lumens
2'	1	LO	12.3	40	1204	1170	807
	1	STD	16.9	40	1639	1593	1099
	1	HI	22.2	40	2022	1965	1355
	2	LO	24.1	40	2486	2416	1568
	2	STD	33.9	40	3306	3211	2084
	2	HI	44.8	40	4058	3942	2558
3'	1	LO	21.3	40	2268	2144	1470
	1	STD	28.5	40	2917	2758	1891
	1	HI	36.3	40	3519	3327	2281
	2	LO	56.8	40	5621	5303	3393
	2	STD	64.0	40	6227	5875	3759
	2	HI	71.7	40	6789	6405	4098
4'	1	LO	23.6	40	2467	2392	1623
	1	STD	33.6	40	3306	3206	2175
	1	HI	44.5	40	4066	3942	2675
	2	LO	57.4	40	5722	5564	3574
	2	STD	67.5	40	6520	6339	4071
	2	HI	89.3	40	7929	7709	4951

Lumen Calculator

Approximate CCT Multiplier	
3000K	0.98
3500K	1.00
4000K	1.00
5000K	1.01

Product Specifications

Fasteners

- **FVSP** - Captive, stainless steel, countersunk, flush, tamperproof, T20 TORX ®-head screws prevent unauthorized access. Screw heads painted to match housing color/finish.
- **FVSM** - 2 white T20 TORX screws prevent unauthorized access.

Housing

- Die-formed 16 ga. Steel (FVS4P), 18 ga. Steel (FVS4M) with welded and ground ends. Stainless steel housing available.

Finish

- Matte white electrostatically applied, white powder coat finish.
- Gloss white and anti-microbial white painted finish available.
- Electrostatically applied, matte white powder coat finish; gloss white, silver, black, bronze, dark platinum available; Custom colors available (supply RAL number, paint chips, or paint manufacturer catalog number). 16 architectural colors available.

Gasket

- Concealed, polyurethane end gaskets inhibit the entrance of environmental contaminants.

Lens

- Nominal 0.125", UV stabilized, clear Pattern 12, impact-resistant, prismatic polycarbonate refractor for high efficiency, low surface brightness and maximum strength. Opal smooth available. .187" thick clear Pattern 12 prismatic polycarbonate available.
- Lifetime Lens Warranty.

LEDs

- Available with 3000K, 3500K, 4000K, 5000K with minimum of 80CRI. 90 CRI available (except 3' length)
- Projected life is 50,000 hours at 70% lumen maintenance.

Lens Retention

- The FVS4P double wall lens channel captivates lens to prevent unauthorized fixture penetration. Screws along each side to ensure maximum lens captivation. FVS4M incorporates (2) tamper resistant screws, one on each endcap.

Transformer/Driver

- Electronic driver 120V-277V, 0-10V, dimming standard.

Compliance

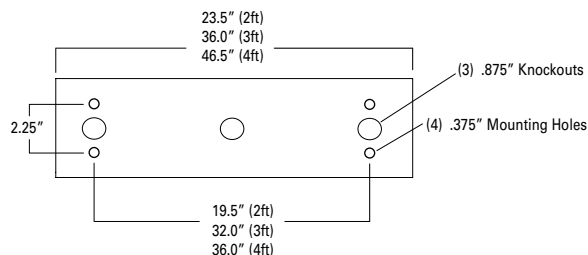
- UL listed for damp location. Wet location listed under covered ceiling optional, FVS4P & FVS4M.

Warranty

- 5 Year warranty on LED's and electrical.
- Fail-Safe will repair or replace any vandal resistant / high abuse luminaire, that is deemed non-functional due to physical damage to the luminaire exterior housing or polycarbonate lens. The luminaire must be installed correctly, and the warranty does not include any interior component, nor does it include damage due to gunfire, paint, caustic material / chemicals, disastrous or abnormal events.

Dimensional and Mounting Details

2',3',4' - Mounting Dimensions



8' - Mounting Dimensions

