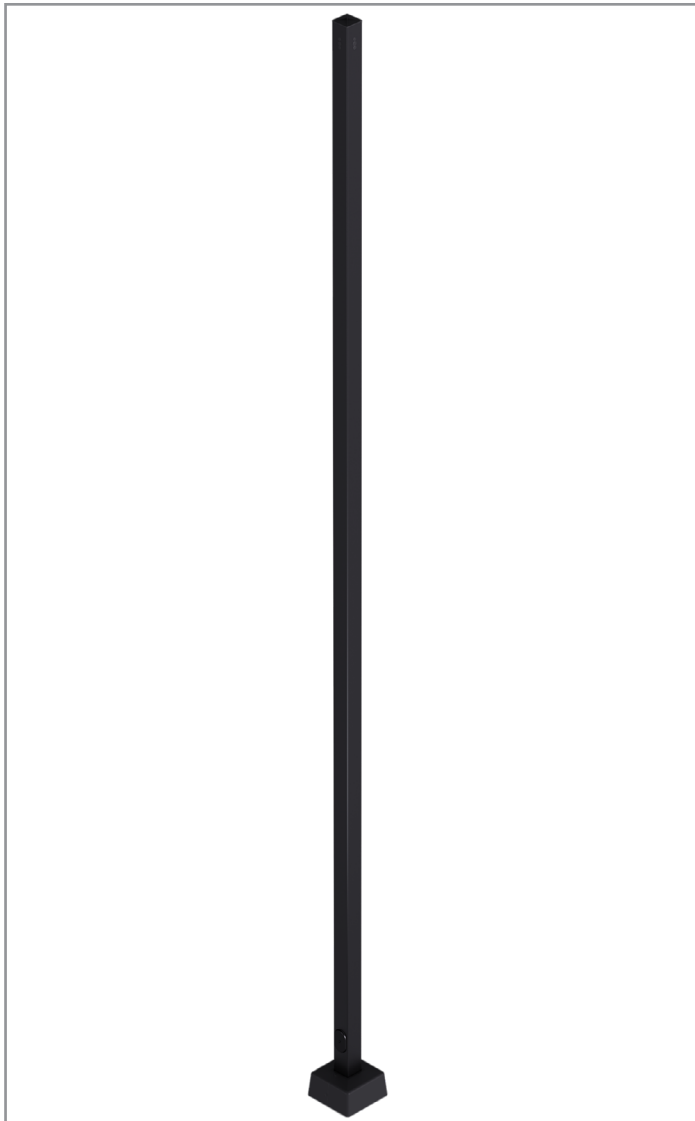


Project		Catalog #		Type	
Prepared by		Notes		Date	



## Cooper Poles

### Square Straight Steel - Quick Spec QS-SSS

#### Anchor Base Installation

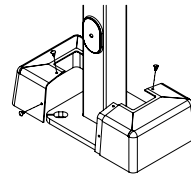
#### Product Certifications & Features



AASHTO

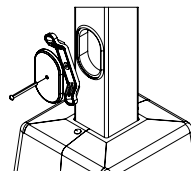


#### Base Cover



- 2-piece ABS base cover, bronze or black matching pole finish
- Premium metal base cover offered as accessory
- Corrosion resistant hardware

#### Handhole



- Reinforced 3"x5" nominal, 18" minimum above base
- Durable ABS handhole cover
- Premium metal handhole cover, offered as accessory
- Corrosion resistant hardware
- Grounding provision included

#### Finish



BK - Black, Smooth



BZ - Bronze, Smooth

- Highly durable TGIC polyester powder paint
- ASTM D3359 5B classification

#### Quick Facts

- One-piece weldable grade carbon steel
- One-year limited warranty
- Industry-leading performance and lead time



#### Interactive Menu

- Ordering Information [page 2](#)
- Mounting Details & Drill Patterns [page 3](#)
- Accessory Details & Compatible Luminaires [page 4](#)
- Certification Data [page 5 & 6](#)
- Considerations [page 7](#)

#### Domestic Preferences

BABA option supports both the USA Buy America (BAA) and Infrastructure Investment and Jobs Act (IIJA) domestic preference procurement requirements.

## Ordering Information

Ordering CAT Logic <sup>1</sup>	Mounting Height (ft.)	Shaft Size (in.)	Wall thickness	Installation Type	Drill Pattern	Finish (replaces xx)
QS-SSS-15-4-11-AB-N4-xx	15	4"	11 = 11ga (.12")	AB = Anchor Base	N4 = 4x Type N Drilling	BZ = Bronze Smooth, BK = Black Smooth
QS-SSS-20-4-11-AB-N4-xx	20	4"	11 = 11ga (.12")	AB = Anchor Base	N4 = 4x Type N Drilling	BZ = Bronze Smooth, BK = Black Smooth
QS-SSS-20-5-11-AB-N4-xx	20	5"	11 = 11ga (.12")	AB = Anchor Base	N4 = 4x Type N Drilling	BZ = Bronze Smooth, BK = Black Smooth
QS-SSS-25-4-11-AB-N4-xx	25	4"	11 = 11ga (.12")	AB = Anchor Base	N4 = 4x Type N Drilling	BZ = Bronze Smooth, BK = Black Smooth
QS-SSS-25-5-11-AB-N4-xx	25	5"	11 = 11ga (.12")	AB = Anchor Base	N4 = 4x Type N Drilling	BZ = Bronze Smooth, BK = Black Smooth
QS-SSS-30-5-11-AB-N4-xx	30	5"	11 = 11ga (.12")	AB = Anchor Base	N4 = 4x Type N Drilling	BZ = Bronze Smooth, BK = Black Smooth
QS-SSS-30-5-7-AB-N4-xx	30	5"	7 = 7ga (.18")	AB = Anchor Base	N4 = 4x Type N Drilling	BZ = Bronze Smooth, BK = Black Smooth
QS-SSS-35-5-7-AB-N4-xx	35	5"	7 = 7ga (.18")	AB = Anchor Base	N4 = 4x Type N Drilling	BZ = Bronze Smooth, BK = Black Smooth

## NOTES:

1. Anchor bolts and template included.

Domestic Preferences (Add as Prefix)	
<b>BABA = Build America Buy America Act</b>	Only product configurations with this prefix are built to be compliant with the Buy American Act of 1933 (BAA) or the Buy America Build America Act (BABA). BABA is the minimum government compliance requirement for the Buy America Build America standards which is part of the Infrastructure and Investment Jobs Act (IIJA). Individual government agencies may have more stringent compliance standards. Please refer to the <a href="#">DOMESTIC PREFERENCES</a> website or consult the CLS Domestic Preferences team for more information. Components shipped separately may be separately analyzed under domestic preference requirements

Accessories (Order Separately) <sup>1</sup>	
<b>BCP-SSS-xxxxx</b> = premium 2pc metal base cover <sup>2</sup> <b>HCP-SSS-xxxxx</b> = premium metal handhole cover <sup>2</sup> <b>VDF-SSS-xx</b> = vibration dampener <sup>3</sup> <b>ABKIT-SSS-4-11-STD</b> = Anchor Bolt Kit, .75"x17"x3.0", 4"sq 11ga <b>ABKIT-SSS-5-11-STD</b> = Anchor Bolt Kit, .75"x17"x3.0", 5"sq 11ga <b>ABKIT-SSS-5-7-STD</b> = Anchor Bolt Kit, 1.0"x36.0"x4.0", 5"sq 7ga	1. Add 'BABA' as prefix for BABA-compliant accessories 2. <b>xxxxxx</b> = size, wall thickness, and finish (ex. <b>BCP-SSS-4-11-BZ</b> ) 3. <b>xx</b> = mounting height, (ex. <b>VDF-SSS-30</b> )

## Anchor Bolt Shipping Options (Add as suffix)

Standard Kits = 4 fully galvanized anchor bolts, 8 galvanized nuts & washers, and template

Option	Description
<b>L/AB</b>	Less Anchor Bolts and Template Kit

Ex. QS-SSS-15-4-11-AB-N4-BZ-L/AB

## Additional Services Offered

Services are offered to support the engineering and design community when required.

Service	Description
<b>DSGN-FOUNDATION-[XX]</b> <sup>1,3</sup>	Foundation Design; per pole type, per revision
<b>DSGN-PE-POLE-[XX]</b> <sup>1</sup>	Professional Engineering Stamped Drawings; per pole type, per revision
<b>DSGN-POLE-CALCULATIONS</b> <sup>2</sup>	Pole Calculations; per pole type, per revision
<b>DSGN-POLE-SUBMITTALS</b> <sup>2</sup>	Pole submittal Drawings; per pole type per revision

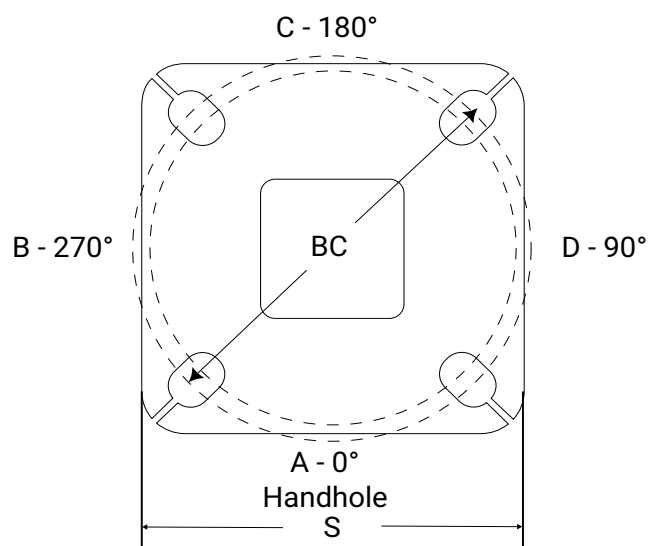
## NOTES:

1. XX to be replaced by state abbreviation (EX. DSGN-FOUNDATION-GA).

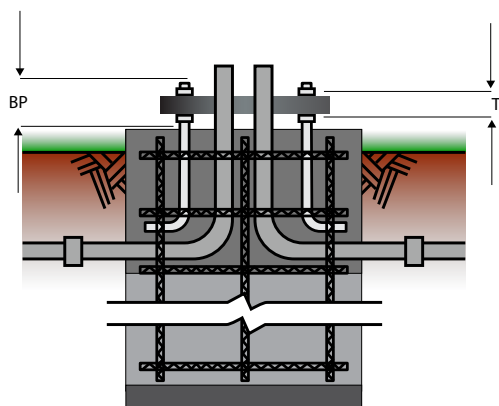
2. Original and first revision free of charge.

3. Available only in AL, AR, CT, FL, GA, IA, KS, KY, MA, MI, MN, NC, ND, NE, NV, PA, SC, SD, TN, TX, WA, WI, and WY.

### Mounting Details



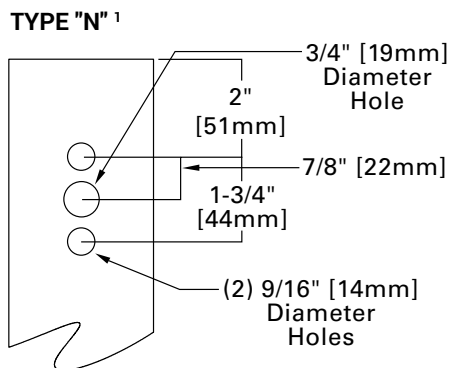
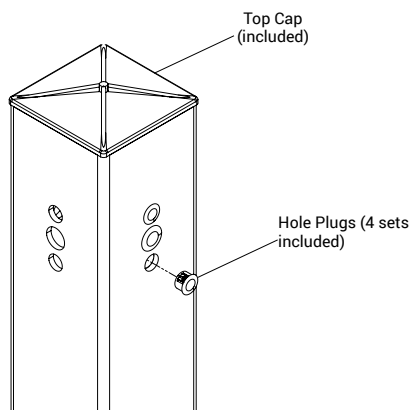
A/B/C/D denote pole quadrants. Handhole always at 'A' or 0°



Pole	Base Size		Anchor Bolt Details		
	Square Size (S)	Thickness (T)	Bolt Circle (BC)	Bolt Size	Bolt projection (BP)
QS-SSS-15-4-11-AB-N4-BZ	8	0.75	8.5	.75 x 17 x 3	3.0 - 3.5
QS-SSS-20-4-11-AB-N4-BZ	8	0.75	8.5	.75 x 17 x 3	3.0 - 3.5
QS-SSS-20-4-11-AB-N4-BK	8	0.75	8.5	.75 x 17 x 3	3.0 - 3.5
QS-SSS-20-5-11-AB-N4-BZ	11	0.75	11	.75 x 17 x 3	3.0 - 3.5
QS-SSS-25-4-11-AB-N4-BZ	8	0.75	8.5	.75 x 17 x 3	3.0 - 3.5
QS-SSS-25-4-11-AB-N4-BK	8	0.75	8.5	.75 x 17 x 3	3.0 - 3.5
QS-SSS-25-5-11-AB-N4-BZ	11	0.75	11	.75 x 17 x 3	3.0 - 3.5
QS-SSS-25-5-11-AB-N4-BK	11	0.75	11	.75 x 17 x 3	3.0 - 3.5
QS-SSS-30-5-11-AB-N4-BZ	11	0.75	11	.75 x 17 x 3	3.0 - 3.5
QS-SSS-30-5-7-AB-N4-BZ	11	1	11	1 x 36 x 4	3.5 - 4.0
QS-SSS-35-5-7-AB-N4-BK	11	1	11	1 x 36 x 4	3.5 - 4.0

Dimensions in inches

### Drill Pattern Details



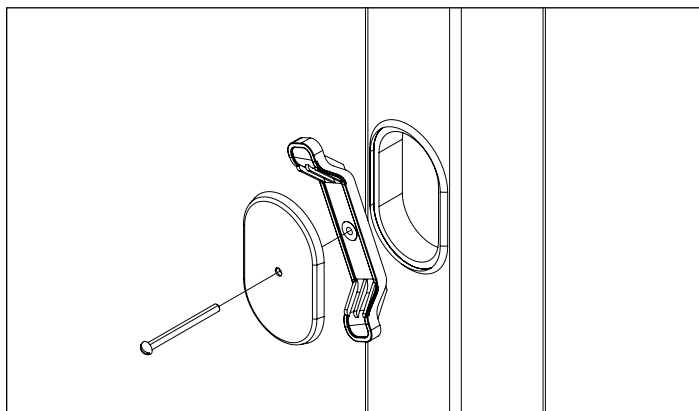
#### NOTES:

1. N pattern suitable for Lumark LAS Pole Mount, Prevail Quick Mount, Galleon Pedestrian Companion Quick Mount, and Galleon II (QU, QM, PA and UP mounting options).

### Accessory Details

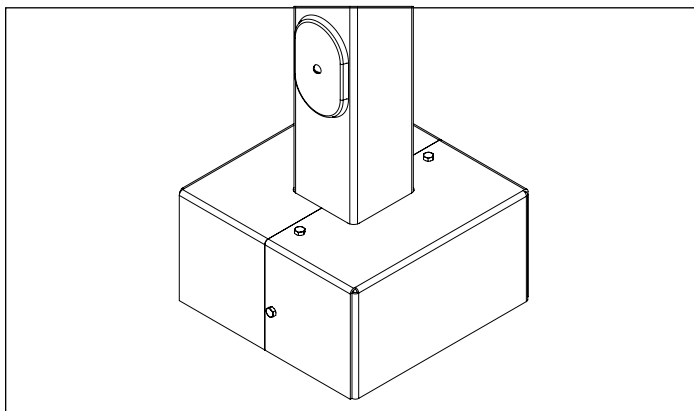
#### Premium Handhole Details

Metal handhole cover with hardware (offered in bronze and black)



#### Premium Metal Base Cover Details

2-piece metal base cover with corrosion-resistant hardware (offered in bronze and black)



### Suggested Luminaires

#### LAS Pole Mount



#### Galleon Pedestrian Companion with Quick Mount



#### Prevail with Quick Mount



#### Galleon II <sup>1</sup>



#### NOTES:

1. Galleon II with standard pole mount arm, quick mount universal arm (QU), pole mount arm with quick mount adapter (QM), upswept arm (UP), and pole mount adjustable arm (PA)

## Certification Data

ASCE 7-93 EPA [SQ. FT] WITH 1.3 GUST (COMMONLY USED STANDARDS) <sup>1, 2</sup>

Catalog Number	Shaft Size	Mounting Height	Gauge	80 MPH		90 MPH		100 MPH		110 MPH	
				Max EPA (sq. ft)	Max Weight	Max EPA (sq. ft)	Max Fixture Load (lb)	Max EPA (sq. ft)	Max Fixture Load (lb)	Max EPA (sq. ft)	Max Fixture Load (lb)
QS-SSS-15-4-11-AB-N4-BZ	4"	15'	11	12.6	315	9.4	235	7.1	177	5.5	137
QS-SSS-20-4-11-AB-N4-BZ	4"	20'	11	7.3	182	4.9	122	3.2	80	1.9	47
QS-SSS-20-4-11-AB-N4-BK	4"	20'	11	7.3	182	4.9	122	3.2	80	1.9	47
QS-SSS-20-5-11-AB-N4-BZ	5"	20'	11	10.9	272	7.5	187	5.1	127	3.4	85
QS-SSS-25-4-11-AB-N4-BZ	4"	25'	11	3.6	90	1.7	42	0.3	7	-	-
QS-SSS-25-4-11-AB-N4-BK	4"	25'	11	3.6	90	1.7	42	0.3	7	-	-
QS-SSS-25-5-11-AB-N4-BZ	5"	25'	11	5.9	147	3.3	82	1.4	35	-	-
QS-SSS-25-5-11-AB-N4-BK	5"	25'	11	5.9	147	3.3	82	1.4	35	-	-
QS-SSS-30-5-11-AB-N4-BZ	5"	30'	11	1.8	45	-	-	-	-	-	-
QS-SSS-30-5-7-AB-N4-BZ	5"	30'	7	10.1	252	6.4	160	3.7	92	1.7	42
QS-SSS-35-5-7-AB-N4-BK	5"	35'	7	5.7	142	2.5	62	0.3	7	-	-

## NOTES:

1. Maximum weight based on 25 pounds per square foot of EPA.

2. EPAs based on shaft properties with wind normal to flat. EPAs calculated using base wind velocity as indicated plus 30% gust factor.

### LATEST FLORIDA BUILDING CODES & AASHTO STANDARDS EPA [SQ. FT] (WITH 3SEC GUST) <sup>1, 2</sup>

Catalog Number	Shaft Size	Mounting Height	Gauge	120 MPH		130 MPH		140 MPH		150 MPH		160 MPH		170 MPH		180 MPH	
				Max EPA (sq. ft)	Max Fixture Load (lb)	Max EPA (sq. ft)	Max Fixture Load (lb)	Max EPA (sq. ft)	Max Fixture Load (lb)	Max EPA (sq. ft)	Max Fixture Load (lb)	Max EPA (sq. ft)	Max Fixture Load (lb)	Max EPA (sq. ft)	Max Fixture Load (lb)	Max EPA (sq. ft)	Max Fixture Load (lb)
QS-SSS-15-4-11-AB-N4-BZ	4"	15'	11	20.0	220	16.4	220	13.6	220	11.3	220	9.4	220	7.9	220	6.6	220
QS-SSS-20-4-11-AB-N4-BZ	4"	20'	11	11.8	220	9.3	220	7.3	220	5.7	220	4.3	220	3.2	220	2.3	220
QS-SSS-20-4-11-AB-N4-BK	4"	20'	11	11.8	220	9.3	220	7.3	220	5.7	220	4.3	220	3.2	220	2.3	220
QS-SSS-20-5-11-AB-N4-BZ	5"	20'	11	15.3	220	12.0	220	9.4	220	7.3	220	5.6	220	4.1	220	2.9	220
QS-SSS-25-4-11-AB-N4-BZ	4"	25'	11	6.6	220	4.7	220	3.1	220	1.9	220	1.0	220	-	220	-	220
QS-SSS-25-4-11-AB-N4-BK	4"	25'	11	6.6	220	4.7	220	3.1	220	1.9	220	1.0	220	-	220	-	220
QS-SSS-25-5-11-AB-N4-BZ	5"	25'	11	8.5	220	6.0	220	4.0	220	2.4	220	1.1	220	-	220	-	220
QS-SSS-25-5-11-AB-N4-BK	5"	25'	11	8.5	220	6.0	220	4.0	220	2.4	220	1.1	220	-	220	-	220
QS-SSS-30-5-11-AB-N4-BZ	5"	30'	11	3.6	220	1.6	220	-	220	-	220	-	220	-	220	-	220
QS-SSS-30-5-7-AB-N4-BZ	5"	30'	7	15.4	220	11.8	220	8.9	220	6.6	220	4.6	220	3.1	220	1.7	220
QS-SSS-35-5-7-AB-N4-BK	5"	35'	7	9.8	220	6.8	220	4.4	220	2.4	220	0.9	220	-	220	-	220

#### NOTES:

1. The maximum EPA values are based upon the published maximum weight noted. Lower weights will result in higher EPA values.
2. Includes Florida Building Code 2023/2020, AASHTO LRFD-LTS-1, and ASCE-7 standards.

### Considerations

#### DESIGN CONSIDERATIONS - VIBRATIONS AND NON-GROUND MOUNTED INSTALLATIONS

The information contained herein is for general guidance only and is not a replacement for professional judgment. Design considerations for wind induced vibrations and non-ground mounted installations (e.g., installations on bridges or buildings) are not included in this document. Consult with a professional, and local and federal standards, before ordering to ensure product is appropriate for the intended purpose and installation location. Refer to the Cooper Lighting Solutions Light Pole White Paper for risk factors and design considerations. [Learn more.](#)

**NOTE:** The [Limited warranty](#) for this product specifically excludes fatigue failure or similar damage resulting from vibration, harmonic oscillation or resonance.

Specifications and dimensions subject to change without notice. Consult your lighting representative at Cooper Lighting Solutions or visit [www.cooperlighting.com](http://www.cooperlighting.com) for available options, accessories and ordering information.

#### VIBRATION

Vibrations may cause damage to structures, including poles. Vibrations are unpredictable, and there are many factors and variables that can cause damaging vibrations. Many wind conditions exist that can create damaging vibrations to poles and luminaires, such as constant winds between 10-30 mph. Although all pole types can experience vibration, straight square poles seem to be most prone. Vibration dampeners and/or a round tapered design may be used to mitigate damage from vibrations, but there is no guarantee damaging vibrations will be prevented. Vibration dampeners are not included with this pole but can be ordered separately. Consult with a professional, and local and federal standards, to ensure this pole is appropriate for the intended purpose and installation location. Refer to Cooper Lighting Solutions' Light Pole [White Paper](#) for risk factors and design considerations.

#### MAINTENANCE

Perform inspections periodically. A prudent inspection schedule would be: one week after installation, one month after installation, yearly after installation, and following any major wind event. During the inspection, check the poles for cracks. If cracks are detected, remedial action is required. Recheck anchor bolt torques and re-tighten according to the recommended torque values. Check for missing covers and pole caps and replace as necessary. Check the pole for corrosion and deterioration of the finish. Should there be corrosion or deterioration, take remedial action to correct.

**WARNING:** Customer is responsible for engineering analysis to confirm pole and fixture compatibility for all applications. Refer to pole white paper [WP513001EN](#) for additional support information. Before installing, make sure proper anchor bolts and templates are obtained. The use of unauthorized accessories such as banners, signs, cameras or pennants for which the pole was not designed voids the pole warranty and may result in pole failure causing serious injury or property damage. Information regarding total loading capacity can be supplied upon request. The pole warranty is void unless poles are used and installed as a complete pole and luminaire combination. This warranty specifically excludes failure as the result of a third party act or omission, misuse, unanticipated uses, fatigue failure or similar phenomena resulting from induced vibration, harmonic oscillation or resonance associated with movement of air currents around the product.

Specifications and dimensions subject to change without notice. Consult your lighting representative at Cooper Lighting Solutions or visit [www.cooperlighting.com](http://www.cooperlighting.com) for available options, accessories, and ordering information.