

Project		Catalog #		Type	
Prepared by		Notes		Date	



## PrentaLux

### CYL6 - 6" Sustainable LED Cylinder

6" Cylinder  
Integral LED Light Engine  
Functional Performance Decorative

#### Typical Applications

• Office • Education • Healthcare • Hospitality • Retail • National Accounts

#### Interactive Menu

- Order Information [page 2](#)
- Product Specifications & Colors [page 3](#)
- Textures [page 4](#)
- Mounting [page 4](#)
- Lumen Maintenance & Photometric Data [page 5](#)
- Lumen/Wattage/LPW & UGR Data [page 5](#)



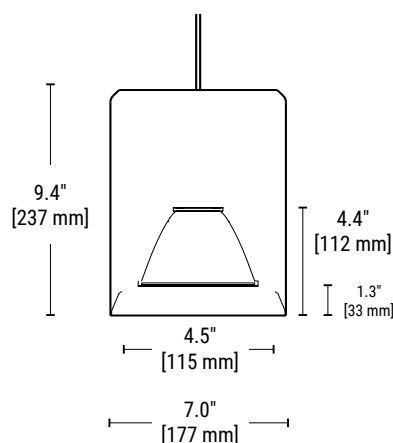
Filament only



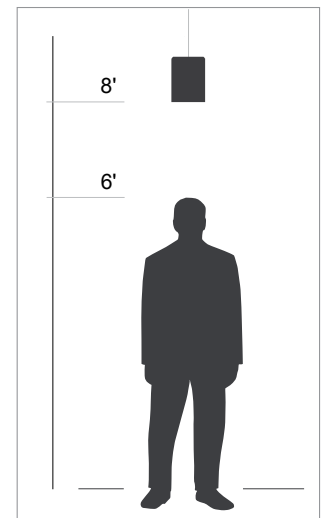
## Top Product Features

- PrentaLux CYL6 is a series of performance and decorative cylinder pendants using Cooper Lighting Solutions additive manufacturing technology with an integral LED light engine.
- 8 housing texture options available.
- 9 standard opaque housing color options and 5 opaque color inner trim options with additional on-demand colors available.
- 90+ CRI standard with 4 CCT options (2700K, 3000K, 3500K, 4000K).
- 8 Light Levels ranging from nominal 1000 to 7000+ lumens.
- Universal Voltage (120-277V).
- 0-10V integral driver with dimming from 100% to 1%.
- [Declare compliant](#)
- LBC Red List approved.
- 5 Year Warranty.

## Dimensions



## Scale



## Order Information

SAMPLE CATALOG NUMBER: **PRLX-CYL6-9-935-31L-FL-U-S-BLAK-MW-BRSS-CCL-DB**

Domestic Preferences	Brand	Series	Height	CRI/CCT	Light Level	Optics	Voltage	Dimming
<b>[Blank]</b> = Standard <b>BAA</b> = Buy America Act	<b>PRLX</b>	<b>CYL6</b>	<b>9</b> = 9"	<b>927</b> = 90 CRI, 2700K <b>930</b> = 90 CRI, 3000K <b>935</b> = 90 CRI, 3500K <b>940</b> = 90 CRI, 4000K	<b>12L</b> = 1200 lms (at 3500K, 90CRI), 7.5W <b>18L</b> = 1800 lms (at 3500K, 90CRI), 11W <b>23L</b> = 2300 lms (at 3500K, 90CRI), 15W <b>31L</b> = 3100 lms (at 3500K, 90CRI), 20.5W <b>43L</b> = 4300 lms (at 3500K, 90CRI), 29.5W <b>48L</b> = 4800 lms (at 3500K, 90CRI), 33.5W <b>62L</b> = 6200 lms (at 3500K, 90CRI), 48W <b>74L</b> = 7400 lms (at 3500K, 90CRI), 61.5W	<b>MD</b> = Medium (25°) <b>FL</b> = Flood (36°) <b>WD</b> = Wide Flood (60°)	<b>U</b> = Universal Voltage (120-277V)	<b>S</b> = 0-10V, 100-1% Dimming
1. Only product configurations with this designated prefix are built to be compliant with the Buy American Act of 1933 (BAA). Please refer to DOMESTIC PREFERENCES website for more information. Components shipped separately may be separately analyzed under domestic preference requirements.	Notes	Notes		Notes	Notes 1. Lumen targets above are based on 90 CRI and 3500K values. Use IES files for accurate calculations. 1. See Lumen Table on Page 5 for exact CCT to Lumen table values.	Notes	Notes	Notes

Continue here to make complete selections

Housing Color <sup>1</sup>	Housing Texture	Trim Color <sup>1</sup>	Mounting Type	Canopy Shape and Color
<b>Standard Housing Colors</b> <b>WHITE</b> = White <b>BLAK</b> = Black <b>GRAY</b> = Gray <b>ROSE</b> = Rose <b>CAPP</b> = Cappuccino <b>SAGE</b> = Sage <b>BRNZ</b> = Bronze <b>BRSS</b> = Brass <b>SLVR</b> = Silver  <b>XXXX<sup>2</sup></b> = On-Demand Color	<b>Outer Shade Textures</b> <b>MW</b> = Micro Woven (Standard) <b>NL</b> = Natural Lines <b>VF</b> = Vertical Fluted <b>CH</b> = Checkered <b>QS</b> = Quilted Square <b>HC</b> = Honeycomb <b>TP</b> = Triangular Pyramids <b>IC</b> = Iced Out  <b>XX<sup>2</sup></b> = Other Shade Texture	<b>Standard Trim Colors</b> <b>WHITE</b> = White <b>BLAK</b> = Black <b>SLVR</b> = Silver <b>BRNZ</b> = Bronze <b>BRSS</b> = Brass <b>HTCM</b> = Housing Trim Color Match  <b>XXXX<sup>2</sup></b> = On-Demand Color	<b>Cord Mounting<sup>1</sup></b> <b>CCL</b> = Cord, Clear Jacket	<b>DW</b> = Disk - White <b>DB</b> = Disk - Black <b>DC</b> = Disk canopy matches outer shade color (opaque color only)  <b>CW</b> = Conical - White <b>CB</b> = Conical - Black <b>CC</b> = Conical canopy matches outer shade color (opaque color only)
Notes 1. See page 3 for images of color options. 2. On-Demand colors available with possible extended lead times and additional costs. Consult factory. See page 3 for images of On-Demand color options.	Notes 1. See page 4 for texture details and options. 2. Consult factory to request other textures. Extended lead times, additional costs, and minimum order quantity may apply.	Notes 1. See page 3 for images of color options. 2. On-Demand colors available with possible extended lead times and additional costs. Consult factory. See page 3 for images of On-Demand color options.	Notes 1. Standard length of cord - 10ft [3050 mm].  Max available length is 25ft [7.62 m]. Consult factory for lengths longer than 10ft.	Notes 1. Standard length of cord - 10ft [3050 mm].  Max available length is 25ft [7.62 m]. Consult factory for lengths longer than 10ft. 2. Power cord is always silver.

## Product Specifications

### Construction

- PrentaLux CYL6 consists of an integral LED light engine and driver.
- CYL6 series housing components utilize a proprietary, impact resistant polycarbonate for maximum durability
- The polycarbonate used for PrentaLux fixtures is bio-circular and thermally, mechanically and optically optimized for professional/commercial installations. Designed, engineered, and printed in the United States.

### Electrical

- Standard 0-10V driver (with dimming from 100% to 1%) integrated into the pendant head (120/277V/50-60Hz).

### LED & Light Engine

- Available in 2700K, 3000K, 3500K, and 4000K CCT
- 90 CRI standard
- 8 Lumen packages ranging from nominal 1000, 1500, 2000, 3000, 4500, 6000, 7000+ lumens. (subject to specific CCT and Light Level).

### Driver

- Standard offering is 0-10V with 1% dimming.

### Optics

- Medium, Flood and Wide Flood optics available.
- Polar plot and UGR data on page 5.

### Environment

- Suited for 25° ambient. Suitable for damp locations.

### Shielding

- Shade optic depth and design provides excellent physical cut off.
- 3D printing enabled personalization allows for easy adjustment of cut off angle (MOQ may apply)

### Colors & Textures

- 9 standard housing colors available. 5 standard inner trim colors available.
- On-Demand colors and textures available with possible extended lead times and additional costs. Please consult factory.

### Mounting

- Mounting options include UL certified cord and option of 3D printed disk shape or conical shape, mounting hardware.

### Lengths

- Fixture comes with 10ft cord. Lengths up to 25 ft possible. (Consult factory as longer lead times apply).

### Weight

- All products are light weight and much easier to install than traditional pendants.
- CYL6 fixture weighs approximately 6 lbs

### Warranty

- Standard five-year limited warranty on all parts.

### Compliance

- Components are UL recognized and luminaires are cULus listed for 25°C ambient environments. Damp Location Listed
- Filament material is UL certified.
- BAA compliant
- RoHS compliant
- ISCC certified (for 3D printed materials). PrentaLux products will convert to printing our 3D parts with over 65% recycled or bio-circular materials (using an ISCC certified mass balance approach). Bio-circular materials are raw materials from ISCC Plus certified waste streams and residues including tall oils from the wood processing industry or used cooking oil from the food processing industry.
- Not to be installed in food prep areas and hazardous environments which may expose the product to pollutants such as oil, grease, or VOCs.
- IK02 impact rated. Not for installations in locations such as gymnasiums, arenas, sports complexes, multi-purpose rooms, and any other locations where the fixture potentially will be subject to impacts from external sources.

### Sustainability Specifications

- PrentaLux 3D printed parts are produced with at least 65% recycled or bio-circular materials (using an ISCC certified mass balance approach).
- ISCC certified. Certification applies only to 3D printed material.
- Declare compliant.
- LBC Red List approved.

## Standard Housing Colors



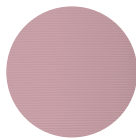
WHITE - White



BLAK - Black



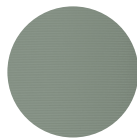
GRAY - Gray



ROSE - Rose



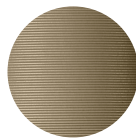
CAPP - Cappuccino



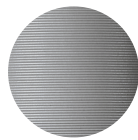
SAGE - Sage



BRNZ - Bronze



BRSS - Brass



SLVR - Silver

## Trim Colors



WHITE - White



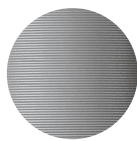
BLAK - Black



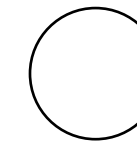
BRNZ - Bronze



BRSS - Brass



SLVR - Silver



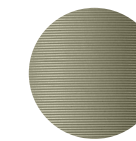
HTCM - Housing Trim Color Match

## On-Demand Colors

These On-Demand color options for housing and trims may have extended lead times and/or additional costs. Please consult factory.



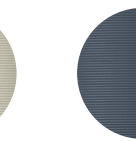
ENGR - Enamel Green



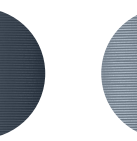
MEGR - Metallic Green



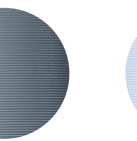
MCHA - Matcha



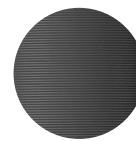
STBL - Steel Blue



MEBL - Metallic Blue



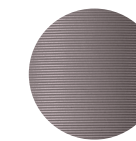
MYBL - Misty Blue



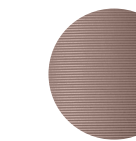
DKGY - Dark Gray



STBR - Stone Brown



MEPU - Metallic Purple



RGLD - Rose Gold



CITR - Citrona



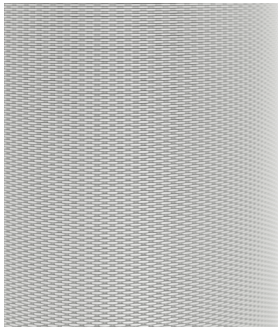
CRWH - Cream White



BURG - Burgundy

## Housing Textures

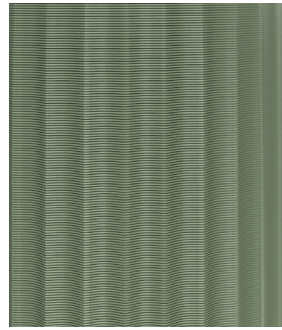
Close up view of textures



Micro Woven (MV)



Natural Lines (NL)



Vertical Fluted (VF)



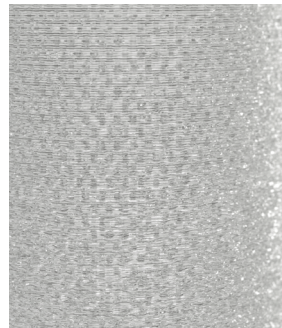
Checkered (CH)



Quilted Square (QS)



Honeycomb (HC)



Iced Out (IC)



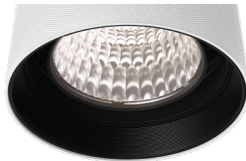
Triangular Pyramids (TP)

## Trim Colors

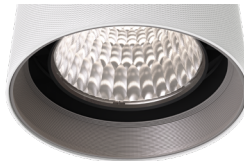
Close up view of trims



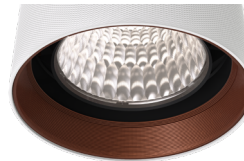
WHITE - White



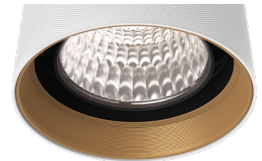
BLAK - Black



SLVR - Silver

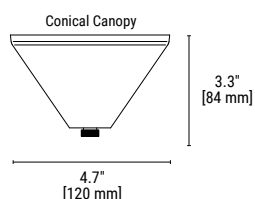
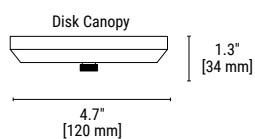


BRNZ - Bronze



BRSS - Brass

## Mounting - Canopy Options



## Canopy Colors



DW  
Disk - White



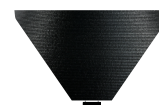
DB  
Disk - Black



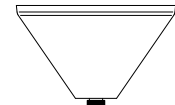
DC  
Disk canopy matches Outer Shade color  
(Opaque Only)



CW  
Conical - White

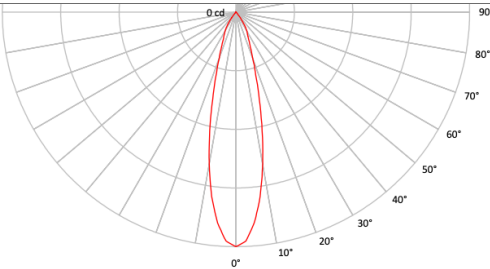


CB  
Conical - Black



CC  
Conical canopy matches Outer Shade color  
(Opaque Only)

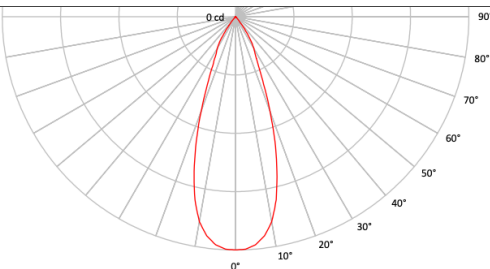
## Photometric Data - Medium

PRENTALUX - CYL6 - 6"- MEDIUM - @ 3500K / 90 CRI		
	Light Level 74L	
Filename	PRLX-CYL6-935-74L-MD-U-S-X-X-WHITE.ies	
Test No.	P979497	
Lumcat	PRLX-CYL6-935-74L-MD-U-S-X-X-WHITE	
Lumens	7482 Lm	
Input Watts	61.5 W	
Efficacy LPW	121.7 Lm/W	
CCT	3500K	
Spacing Criteria (0/90/45)	0.43 / 0.43 / 0.44	

## Lumen/Wattage/LPW Table - Medium

LUMEN Table per CRI, CCT, and Light Level			White Medium	WATTS	EFFICACY (Lm/W)
CRI	CCT	LL			
90	2700	74L	6742	61.5	109.6
	3000	74L	7242	61.5	117.8
	3500	74L	7482	61.5	121.7
	4000	74L	7760	61.5	126.2

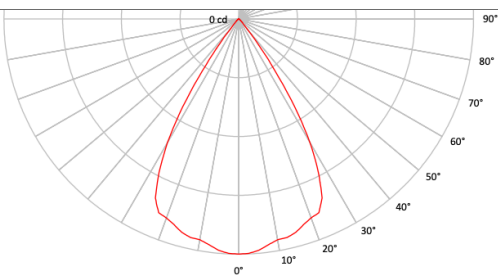
## Photometric Data - Flood

PRENTALUX - CYL6 - 6"- FLOOD - @ 3500K / 90 CRI		
	Light Level 74L	
Filename	PRLX-CYL6-935-74L-FL-U-S-X-X-WHITE.ies	
Test No.	P979495	
Lumcat	PRLX-CYL6-935-74L-FL-U-S-X-X-WHITE	
Lumens	7384 Lm	
Input Watts	61.5 W	
Efficacy LPW	120.1 Lm/W	
CCT	3500K	
Spacing Criteria (0/90/45)	0.32 / 0.32 / 0.33	

## Lumen/Wattage/LPW Table - Flood

LUMEN Table per CRI, CCT, and Light Level			White Flood	WATTS	EFFICACY (Lm/W)
CRI	CCT	LL			
90	2700	74L	6742	61.5	109.6
	3000	74L	7148	61.5	116.2
	3500	74L	7384	61.5	120.1
	4000	74L	7659	61.5	124.5

## Photometric Data - Wide Flood

PRENTALUX - CYL6 - 6"- WIDE FLOOD - @ 3500K / 90 CRI		
	<b>Light Level 74L</b>	
<b>Filename</b>	PRLX-CYL6-935-74L-WD-U-S-X-X-WHTE.ies	
<b>Test No.</b>	P979499	
<b>Lumcat</b>	PRLX-CYL6-935-74L-WD-U-S-X-X-WHTE	
<b>Lumens</b>	7213 Lm	
<b>Input Watts</b>	61.5 W	
<b>Efficacy LPW</b>	117.3 Lm/W	
<b>CCT</b>	3500K	
<b>Spacing Criteria (0/90/45)</b>	1.05 / 1.05 / 0.91	

## Lumen/Wattage/LPW Table - Wide Flood

LUMEN Table per CRI, CCT, and Light Level			White Wide Flood	WATTS	EFFICACY (Lm/W)
CRI	CCT	LL			
90	2700	74L	6586	61.5	107.1
	3000	74L	6978	61.5	113.5
	3500	74L	7213	61.5	117.3
	4000	74L	7482	61.5	121.7