

Project		Catalog #		Type	
Prepared by		Notes		Date	



## PrentaLux

### CYL3S - 3" Surface Mount Cylinder

Sustainable LED Cylinder  
Integral LED Light Engine  
Functional Performance Decorative

#### Typical Applications

• Office • Education • Healthcare • Hospitality • Retail • National Accounts

#### Interactive Menu

- Order Information [page 2](#)
- Product Specifications & Colors [page 3](#)
- Textures [page 4](#)
- Photometric Data [page 5](#)
- Lumen/Wattage/LPW & UGR Data [page 5](#)



Filament only

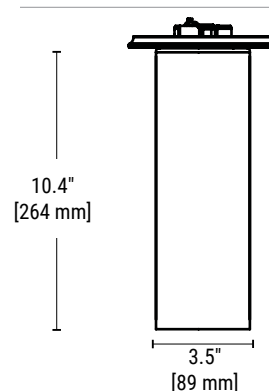


LIVING BUILDING CHALLENGE

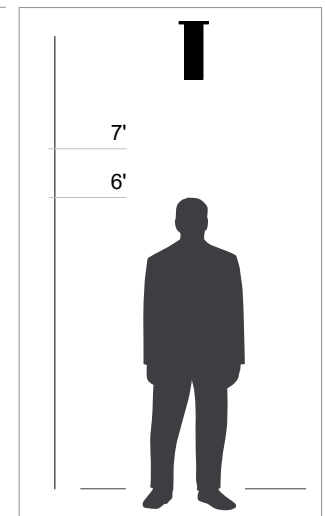
## Top Product Features

- Created using the Cooper Lighting additive manufacturing process, this PrentaLux CYL3S is a series of performance and decorative surface-mounted cylinders with an integral LED light engine.
- 8 housing texture options available.
- 9 standard housing color options and 5 inner trim color options with additional on-demand colors available.
- 90+ CRI standard with 4 CCT options (2700K, 3000K, 3500K, 4000K).
- 3 Light Levels: 1000, 1500, 2300+ nominal lumens.
- Universal Voltage (120-277V) & 347V.
- 0-10V integral driver with dimming from 100% to 1%.
- [Declare compliant](#).
- BAA compliant & BABA Compliant.
- LBC Red List approved.
- 5 Year limited warranty.

## Dimensions



## Scale



Order Information

SAMPLE CATALOG NUMBER: PRLX-CYL3S-10-927-23L-FL-U-S-WHTE-MW-BRSS-DC

--	--	--	--	--	--	--	--

Domestic Preferences	Brand	Series	Height	CRI/CCT	Light Level	Optics	Voltage
<p><b>[Blank]</b> = Standard  <b>BAA</b> = Buy America Act  <b>BABA</b> = Build America Buy America Act</p>	PRLX	CYL3S= 3" Cylinder, Surface Mount	10 = 10" Tall	<p>927 = 90 CRI, 2700K                      930 = 90 CRI, 3000K                      935 = 90 CRI, 3500K                      940 = 90 CRI, 4000K</p>	<p>10L = 1000 lms, 9.5W                      15L = 1500 lms, 13.2W                      23L = 2300 lms, 22.5W</p>	<p>SP = Spot (17°)                      MD = Medium (22°)                      FL = Flood (34°)                      WD = Wide Flood (60°)</p>	<p>U = Universal Voltage (120-277V)                      3 = 347V</p>
<p>1. Only product configurations with these prefixes are built to be compliant with the Buy American Act of 1933 (BAA) or the Build America Buy America Act (BABA). BABA is the minimum Government compliance requirement for the Build America Buy America standards which is part of the Infrastructure and Investment Jobs Act (IIJA). Individual Government Agencies may have more stringent compliance standards. Please refer to <a href="#">DOMESTIC PREFERENCES</a> website or consult the CLS Domestic Preferences team for more information. Components shipped separately may be separately analyzed under domestic preference requirements.</p>	Notes	Notes	Notes	Notes	Notes	Notes	Notes
					<p>1. Nominal lumens above are based on 90 CRI and 3500K values. Use Performance Tables and IES files for precise outputs.                      2. See Lumen Table on page 5 for each CCT lumen value.</p>		<p>1. 347V not BABA compliant.</p>

--	--	--	--	--	--	--	--

Dimming	Housing Color <sup>1</sup>	Housing Texture	Trim Color <sup>1</sup>	Canopy / Cover
S = Standard, 0-10V, 100-1% Dimming	<p><b>Standard Housing Colors:</b>                      WHITE = Satin White                      BLAK = Satin Black                      GRAY = Satin Gray                      ROSE = Satin Rose                      CAPP = Satin Cappuccino                      SAGE = Satin Sage                      BRNZ = Satin Bronze                      BRSS = Satin Brass                      SLVR = Silver                      XXXX<sup>2</sup> = On-Demand Color</p>	<p><b>Outer Shade Textures:</b>                      MW = Micro Woven (Standard)                      NL = Natural Lines                      VF = Vertical Fluted                      CH = Checkered                      QS = Quilted Square                      HC = Honeycomb                      TP = Triangular Pyramids                      IC = Iced Out                      XX<sup>2</sup> = Other Shade Texture</p>	<p><b>Standard Trim Colors:</b>                      WHITE = Satin White                      BLAK = Satin Black                      SLVR = Silver                      BRNZ = Satin Bronze                      BRSS = Satin Brass                      HTCM = Housing Trim Color Match                      XXXX<sup>2</sup> = On-Demand Color</p>	<p><b>Cable Mount</b>                      DW = Disk - White                      DB = Disk - Black                      DC = Disk, Color Match Housing</p>
Notes	Notes	Notes	Notes	Notes
	<p>1. See page 3 for images of color options.                      2. On-Demand colors available with possible extended lead times and additional costs. Consult factory. See page 3 for images of On-Demand color options.</p>	<p>1. See page 4 for texture details and options.                      2. Consult factory to request other textures. Extended lead times, additional costs, and minimum order quantity may apply.</p>	<p>1. See page 3 for images of color options.                      2. On-Demand colors available with possible extended lead times and additional costs. Consult factory. See page 3 for images of On-Demand color options.</p>	

**Product Specifications**

**Construction**

- PrentaLux CYL3S consists of an integral LED light engine and driver.
- Housing components are made with a robust polycarbonate material utilizing a proprietary additive manufacturing process.
- The polycarbonate used for PrentaLux fixtures is bio-circular and thermally, mechanically and optically optimized for professional/commercial installations. Designed, engineered, and printed in the United States.

**Electrical**

- Standard 0-10V driver integrated into the fixture (120/277V/ 50-60Hz).

**LED & Light Engine**

- Available in 2700K, 3000K, 3500K, and 4000K CCT and 90 CRI only.
- Lumen packages ranging from nominal 1000, 1500, 2300 lumens. (Subject to specific CCT and Light Level).

**Driver**

- Standard offering is 0-10V with 1% dimming.

**Optics**

- Polar plot and UGR data on page 5.

**Environment**

- Suited for 25° ambient. Damp location rated.

**Shielding**

- Optic depth and design provides excellent physical cut off.

**Colors & Textures**

- 9 standard housing colors and 8 standard textures available. On-Demand colors and textures available with possible extended lead times and additional costs. Please consult factory.

**Mounting**

- Surface: Mounting option includes UL certified ceiling-mounted disk shape, mounting hardware.

**Weight**

- All products are lightweight, making installation easier.
- 10" CYL3S weighs approximately 2.3 lbs.

**Warranty**

- Standard five-year limited warranty.

**Compliance**

- Components are UL recognized and luminaires are cULus listed for 25°C ambient environments. Damp Location Listed.
- Filament material is UL certified.
- BAA compliant & BABA Compliant
- RoHS compliant
- ISCC certified (for 3D printed materials). PrentaLux products now utilize at least 75% recycled or bio-circular materials (using an ISCC certified mass balance approach) for printing our 3D parts.
- Not to be installed in food prep areas and hazardous environments which may expose the product to pollutants such as oil, grease, or VOCs.
- IK02 impact rated. Not for installations in locations such as gymnasiums, arenas, sports complexes, multi-purpose rooms, and any other locations where the fixture potentially will be subject to impacts from external sources.

**Sustainability Specifications**

- PrentaLux 3D printed parts are produced with at least 75% recycled or bio-circular materials (using an ISCC certified mass balance approach).
- ISCC certified. Certification applies only to 3D printed material.
- Declare compliant.
- LBC Red List approved.

**Standard Housing Colors**



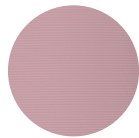
WHTE - White



BLAK - Black



GRAY - Gray



ROSE - Rose



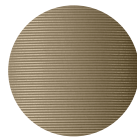
CAPP - Cappuccino



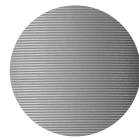
SAGE - Sage



BRNZ - Bronze



BRSS - Brass



SLVR - Silver

**Trim Colors**



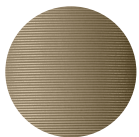
WHTE - White



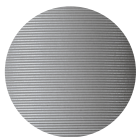
BLAK - Black



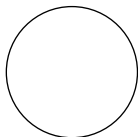
BRNZ - Bronze



BRSS - Brass



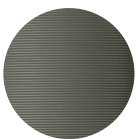
SLVR - Silver



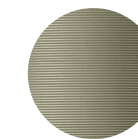
HTCM - Housing Trim Color Match

**On-Demand Colors**

These On-Demand color options for housing and trims may have extended lead times and/or additional costs. Please consult factory.



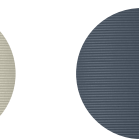
ENGR - Enamel Green



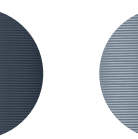
MEGR - Metallic Green



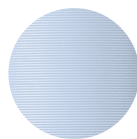
MCHA - Matcha



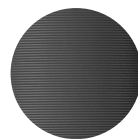
STBL - Steel Blue



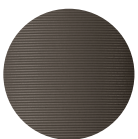
MEBL - Metallic Blue



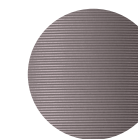
MYBL - Misty Blue



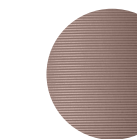
DKGY - Dark Gray



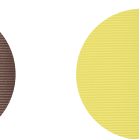
STBR - Stone Brown



MEPU - Metallic Purple



RGLD - Rose Gold



CITR - Citrona



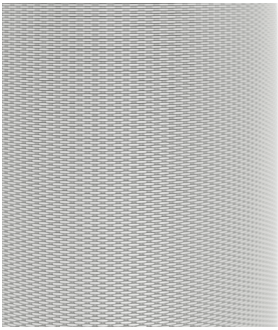
CRWH - Cream White



BURG - Burgundy

**Housing Textures**

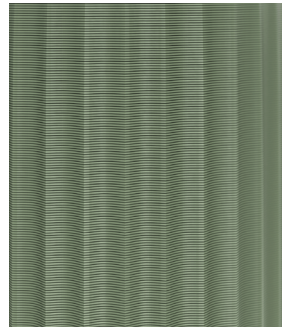
Close up view of textures



Micro Woven (MW)



Natural Lines (NL)



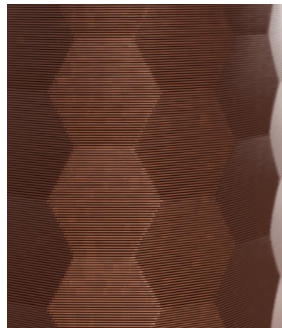
Vertical Fluted (VF)



Checkered (CH)



Quilted Square (QS)



Honeycomb (HC)



Iced Out (IC)



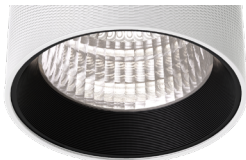
Triangular Pyramids (TP)

**Trim Colors**

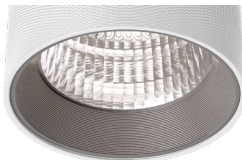
Close up view of trims



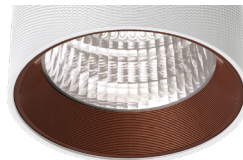
WHTE - White



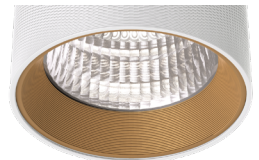
BLAK - Black



SLVR - Silver



BRNZ - Bronze



BRSS - Brass

**Canopy**

Close up view canopies



DW - Disk, White



DB - Disk, Black



DC - Disk canopy matches outer shade color, pictured in BRNZ - Bronze

Photometric Data - Spot

PRENTALUX - CYL3 - 3"- SPOT - @ 3000K / 90 CRI	
Light Level 23L	
Filename	PRLX-CYL3-10-930-23L-SP-U-S-X-X-WHITE.ies
Test No.	P981019
Lumcat	PRLX-CYL3-10-930-23L-SP-U-S-X-X-WHITE
Lumens	2107 Lm
Input Watts	22.5 W
Efficacy LPW	93.7 Lm/W
CCT	3000K
Spacing Criteria (0/90/45)	0.28 / 0.28 / 0.29

Lumen/Wattage/LPW Table - Spot

CRI	LL	CCT	LUMENS	WATTS	EFFICACY (Lm/W)
90	10L	2700	830	9.5	87
		3000	864	9.5	91
		3500	916	9.5	96
		4000	933	9.5	98
	15L	2700	1314	13.5	97
		3000	1370	13.5	102
		3500	1452	13.5	108
		4000	1480	13.5	110
	23L	2700	2023	22.5	90
		3000	2107	22.5	94
		3500	2234	22.5	99
		4000	2276	22.5	101

Photometric Data - Medium

PRENTALUX - CYL3 - 3"- MEDIUM - @ 3000K / 90 CRI	
Light Level 23L	
Filename	PRLX-CYL3-10-930-23L-MD-U-S-X-X-WHTE.ies
Test No.	P981018
Lumcat	PRLX-CYL3-10-930-23L-MD-U-S-X-X-WHTE
Lumens	2308 Lm
Input Watts	22.5 W
Efficacy LPW	102.6 Lm/W
CCT	3000K
Spacing Criteria (0/90/45)	0.32 / 0.32 / 0.37

Lumen/Wattage/LPW Table - Medium

CRI	LL	CCT	LUMENS	WATTS	EFFICACY (Lm/W)
90	10L	2700	909	9.5	96
		3000	946	9.5	100
		3500	1003	9.5	106
		4000	1022	9.5	108
	15L	2700	1440	13.5	107
		3000	1500	13.5	111
		3500	1590	13.5	118
		4000	1620	13.5	120
	23L	2700	2213	22.5	99
		3000	2308	22.5	103
		3500	2446	22.5	109
		4000	2492	22.5	111

Photometric Data - Flood

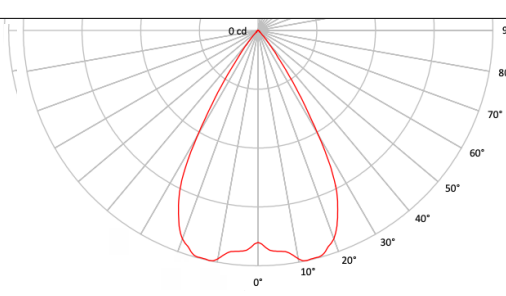
PRENTALUX - CYL3 - 3"- FLOOD - @ 3000K / 90 CRI	
Light Level 23L	
Filename	PRLX-CYL3-10-930-23L-FL-U-S-X-X-WHTE.ies
Test No.	P981017
Lumcat	PRLX-CYL3-10-930-23L-FL-U-S-X-X-WHTE
Lumens	2231 Lm
Input Watts	22.5 W
Efficacy LPW	99.2 Lm/W
CCT	3000K
Spacing Criteria (0/90/45)	0.56 / 0.56 / 0.62

Lumen/Wattage/LPW Table - Flood

CRI	LL	CCT	LUMENS	WATTS	EFFICACY (Lm/W)
90	10L	2700	878	9.5	93
		3000	915	9.5	96
		3500	970	9.5	102
		4000	988	9.5	104
	15L	2700	1392	13.5	103
		3000	1451	13.5	107
		3500	1538	13.5	113
		4000	1567	13.5	116
	23L	2700	2142	22.5	95
		3000	2231	22.5	99
		3500	2365	22.5	105
		4000	2409	22.5	107

Photometric Data - Wide Flood

PRENTALUX - CYL3 - 3"- WIDE FLOOD - @ 3000K / 90 CRI	
	<b>Light Level 23L</b>
<b>Filename</b>	PRLX-CYL3-10-930-23L-WD-U-S-X-X-WHTE.ies
<b>Test No.</b>	P981020
<b>Lumcat</b>	PRLX-CYL3-10-930-23L-WD-U-S-X-X-WHTE
<b>Lumens</b>	2207 Lm
<b>Input Watts</b>	22.5 W
<b>Efficacy LPW</b>	98.1 Lm/W
<b>CCT</b>	3000K
<b>Spacing Criteria (0/90/45)</b>	1.07 / 1.07 / 0.89



Lumen/Wattage/LPW Table - Wide Flood

CRI	LL	CCT	LUMENS	WATTS	EFFICACY (Lm/W)
90	10L	2700	869	9.5	91
		3000	905	9.5	95
		3500	959	9.5	101
		4000	977	9.5	103
	15L	2700	1377	13.5	102
		3000	1435	13.5	106
		3500	1521	13.5	113
		4000	1549	13.5	115
	23L	2700	2118	22.5	94
		3000	2207	22.5	98
		3500	2339	22.5	104
		4000	2383	22.5	106