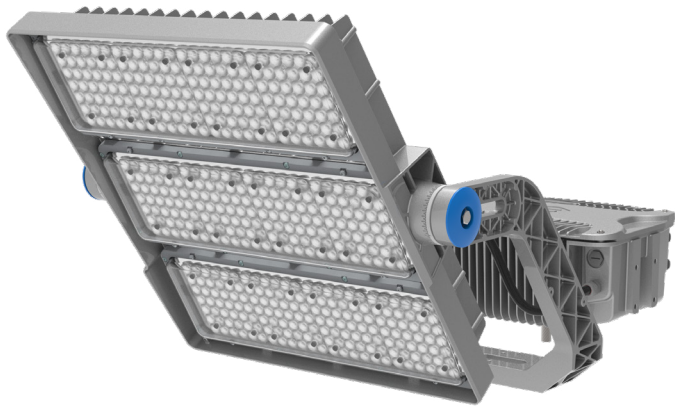


Project		Catalog #		Type	
Prepared by		Notes		Date	



Ephesus

ARENAVISION

Sports & Entertainment Luminaire

Typical Applications

- Stadiums (Soccer, Football, Cricket, Rugby, Tennis)
- Racetracks (Motorsports, Horse Racing)

Product Certification



Interactive Menu

- Product Description and Top Product Features [page 1](#)
- Ordering Information [page 2](#)
- Mounting Configuration Examples [page 3](#)
- Performance Data [page 4](#)
- Light Head Dimensional and Mounting Details [page 5](#)
- Optical Distributions [page 6](#)
- Driver Box Dimensional and Mounting Details [page 8](#)
- Electrical Configuration Examples [page 9](#)
- Ordering Information for Accessories [page 10](#)
- Diving Board (DVGBRD) Dimension and Part Details [page 11](#)
- Example System Topology [page 12](#)

ASSEMBLE: EPH-AV-03-1360S Light Head

ONLY WITH PART: EPH-AV-03-1360S Driver Box

THIS PRODUCT MUST BE INSTALLED IN ACCORDANCE WITH THE APPLICABLE INSTALLATION CODE BY A PERSON FAMILIAR WITH THE CONSTRUCTION AND OPERATION OF THE PRODUCT AND THE HAZARDS INVOLVED.

CE PRODUIT DOIT ÊTRE INSTALLÉ SELON LE CODE D'INSTALLATION PERTINENT, PAR UNE PERSONNE QUI CONNAÎT BIEN LE PRODUIT ET SON FONCTIONNEMENT AINSI QUE LES RISQUES INHÉRENTS.

EPHESUS ARENAVISION AVAILABLE FOR THE US AND CANADIAN MARKETS. FOR ALL OTHER MARKETS CONTACT EPHESUS DIRECTLY.

Product Description

The Ephesus ArenaVision LED floodlighting system is an innovative LED field-lighting solution supporting the latest TV broadcasting standards. Designed exclusively for sports and multi-purpose venues, ArenaVision LED offers outstanding light quality, effective thermal management, and long lifetime. When combined with control applications, ArenaVision LED can simplify the delivery of the right illumination by scheduling or through real-time adjustments and can be used to create customized light shows before, during and after the main event.

Top Product Features

- Maximum design flexibility to fit different stadium architectures and high lighting quality – compliant with international broadcasting standards for any type of sports
- While delivering maximum light output the floodlight has an excellent thermal management system, which in combination with its low weight and IP66 rating helps maximize lifetime and minimize maintenance costs for both new built and retrofit installations
- Single piece pressure die cast housing, with a protection level of IP66 against dust and water
- Wide range of asymmetrical and symmetrical optics ensuring low glare and best in class lighting uniformity exceeding the requirements of all types of sports lighting level standards
- Wide range of ambient temperature tolerance making it suitable for a variety of sports applications
- Option to add additional accessories to achieve best in class glare and up-light control
- Lumen maintenance at L90 median useful life 100,000 hours

ORDERING INFORMATION

NOTE: A complete ArenaVision luminaire order requires a selection entry for both ArenaVision Light Head and ArenaVision Driver Box:

1 ARENAVISION LIGHT HEAD SAMPLE ORDER NUMBER: EPH-AV-03-1360S-STD-57-85-A65-WB-C10-LY-NN-ST

NOTE: A complete ArenaVision Light Head order requires a selection entry for Brand, Family, Model, Power, Color, CCT, CRI, Optic, Light Head Cable (DC), Mount Configuration, Options, and International Options

2 ARENAVISION DRIVER BOX SAMPLE ORDER NUMBER: EPH-AV-03-1360S-GRY-LV-AM-A00-ST

NOTE: A complete ArenaVision Driver Box order requires a selection entry for Brand, Family, Model, Power, Color, Voltage, Control, Power Cable (AC), and International Option

1 ARENAVISION LIGHT HEAD

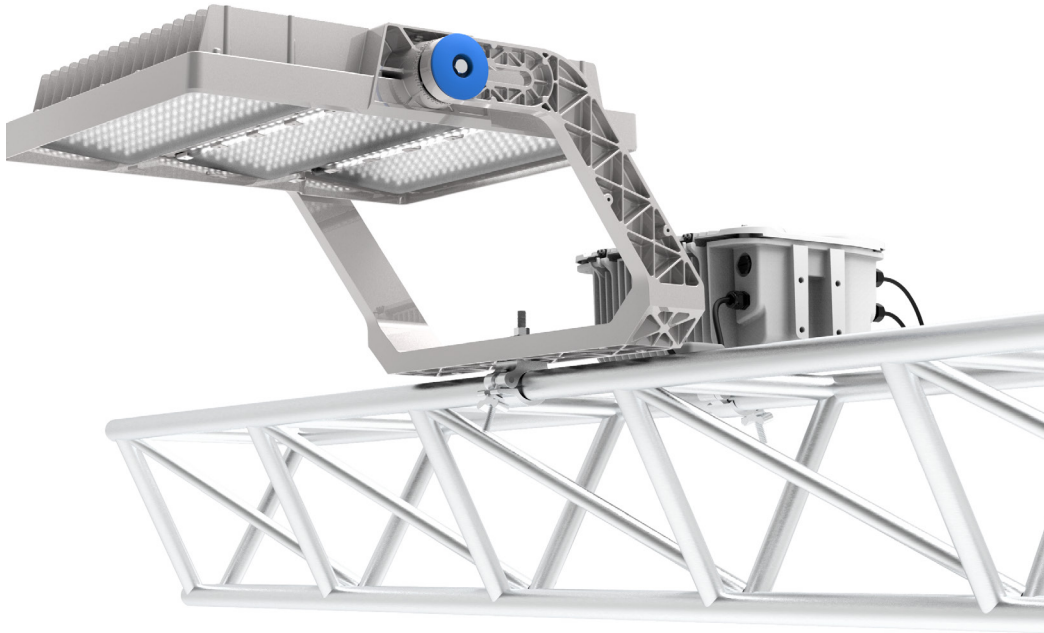
Brand	Family	Model	Power	Color	CCT	CRI	Optic
Brand	Family	Model	Power	Color ¹	CCT	CRI	Optic
EPH = Ephesus, Standard	AV = Arenavision	03 = 3 Light Bar (EPH-AV-03)	1360S = 1360W Satellite Power	STD = Standard, Grey light head ¹	57 = 5700	85 = 85 CRI	S2 = Symmetrical NEMA 2 9.7 19.1 S3 = Symmetrical NEMA 2 9.3 19.0 S4 = Symmetrical NEMA 2 9.9 21.5 S5 = Symmetrical NEMA 2 15.2 26.4 S6 = Symmetrical NEMA 3 19.7 30.5 S7 = Symmetrical NEMA 3 28.4 42.4 S8 = Symmetrical NEMA 4 29.6 48.6 S9 = Symmetrical NEMA 5 37.2 89.0 A35-NB = Asymmetrical 35° Narrow Beam A35-MB = Asymmetrical 35° Medium Beam A35-WB = Asymmetrical 35° Wide Beam A35-VWB = Asymmetrical 35° Very Wide Beam A35-WNB = Asymmetrical 35° Wide Narrow Beam A35-MNB = Asymmetrical 35° Medium Narrow Beam A55-NB = Asymmetrical 55° Narrow Beam A55-MB = Asymmetrical 55° Medium Beam A55-WB = Asymmetrical 55° Wide Beam A55-MNB = Asymmetrical 55° Narrow Medium Beam A65-NB = Asymmetrical 65° Narrow Beam A65-WB = Asymmetrical 65° Wide Beam A65-VWB = Asymmetrical 65° Very Wide Beam A65-WNB = Asymmetrical 65° Wide Narrow Beam A65-WNB = Asymmetrical 65° Wide Narrow Beam
Notes:	Notes:	Notes:	Notes:	Notes: (1) Not coastal rated. Contact Ephesus for coastal luminaire options.	Notes:	Notes:	Notes:

Light Head Cable (DC)	Mount Configuration	Options	International Options
Light Head Cable (DC) ^{2,3}	Mount Configuration	Options ^{4,5}	International Options
C10 = 10' Cable ²	LY = Local Yoke	NN = None EL = External Louver ⁴ LT = Light Spill Light control louver for asymmetrical optics ⁴ BL = Medium Spill light control louver for asymmetrical optics ⁴ LO = Full Spill Light control louver for asymmetrical optics ⁴	ST = Standard
Notes: (2) DC Cable Connecting the Driver Box to the Light Head. (3) Southwire seoprene or Cooper Lighting Solutions approved equivalent: Round 5/c cable, 18 awg, black tpe jacket, (red, orange, white, black, green), 600v, 105c rated, UL SEOWW, waterproof, sunlight resistant, rohs compliant.	Notes:	Notes: (4) LT, BL, LO available for asymmetrical beams (5) EL option available for symmetrical beam options	Notes:

2 ARENAVISION DRIVER BOX

Brand	Family	Model	Power	Color	Voltage	Control	Power Cable (AC)	International Option
Brand	Family	Model	Power	Color	Voltage	Control	Power Cable (AC) ^{1,2}	International Option
EPH = Ephesus, Standard	AV = Arenavision	03 = 3 Light Bar (EPH-AV-03)	1360S = 1360W Satellite Power	GRY = Grey	LV = Low Voltage (120-240V) HV = High Voltage (277-480V)	AM = Wireless AirMesh LB = Wired DMX Landburst NC = No Control	A00 = Standard, no whip A04 = 4' Cable A10 = 10' Cable A15 = 15' Cable	ST = Standard
Notes:	Notes:	Notes:	Notes:	Notes:	Notes:	Notes:	Notes: (1) AC Cable connecting the Driver Box to the electrical power source. (2) SO cord, round 3/c cable, 14 awg, black jacket (black, white, green wires), 600v, UL, waterproof, sunlight resistant, rohs compliant.	Notes:

Mounting Configuration Examples



1QTY ARENAVISION
SHOWN ON A TRUSS WITH MEGA CLAMP MOUNTING BRACKET.
SHOWN USING THE LOCAL YOKE MOUNT (LY)



1QTY ARENAVISION
SHOWN ON A DOUBLE MOUNTING PLATFORM CROSSARM.
SHOWN USING THE LOCAL YOKE MOUNT (LY)

Performance Data¹

	ARENAVISION
Lumen Output Range	87,000 to 168,900lm
Nominal Power ²	1460W
Input Voltage (Low Voltage)	208-277VAC
Input Voltage (High Voltage)	347-480VAC
Efficacy Range	61.6 - 119.5lm/W
CRI ³	85
TLCI ⁴	85
CCT	5700K
Distribution (NEMA)	8 symmetrical optics / 16 Asymmetrical optics
Dimming Range	DIM TO OFF, 10%-100%
Operating Temperature Range	-40°C to +40°C
Usage	INDOOR, OUTDOOR
Mounting Options (1.5G RATED)	LOCAL YOKE
Electrical Certifications	FCC, UL8750, UL1598
Environmental Certifications ⁵	IP66
Vibration	ANSI C136.31-2010 1.5G
Impact Rating	IK08
Surge	10kV
Effective Projected Area (EPA) ⁶	Light Head (tilt 0-90 degrees): 1.56 - 6.2 sq. ft. Driver Box: 2.9 sq. ft.
Luminaire dimensions (LxWxH)	Light Head: 695 x 756 x 441 mm 27.36 x 29.76 x 17.36 inches Driver Box: 424 x 348 x 200 mm 16.69 x 13.7 x 7.87 inches
Luminaire weight ⁷	Net: 94.5lbs Light Head: 55 lbs Driver Box: 40 lbs. exclusive of mounting options and hardware

NOTES:

(1) Specifications are subject to change without notice.

(2) Values are +/- 4% when fixture is operated at 25°C ambient

(3) CRI = -2%

(4) Values are +/- 3 points.

(5) When driver box is mounted in upright position.

(6) EPA may vary depending on the aiming angle of the fixture.

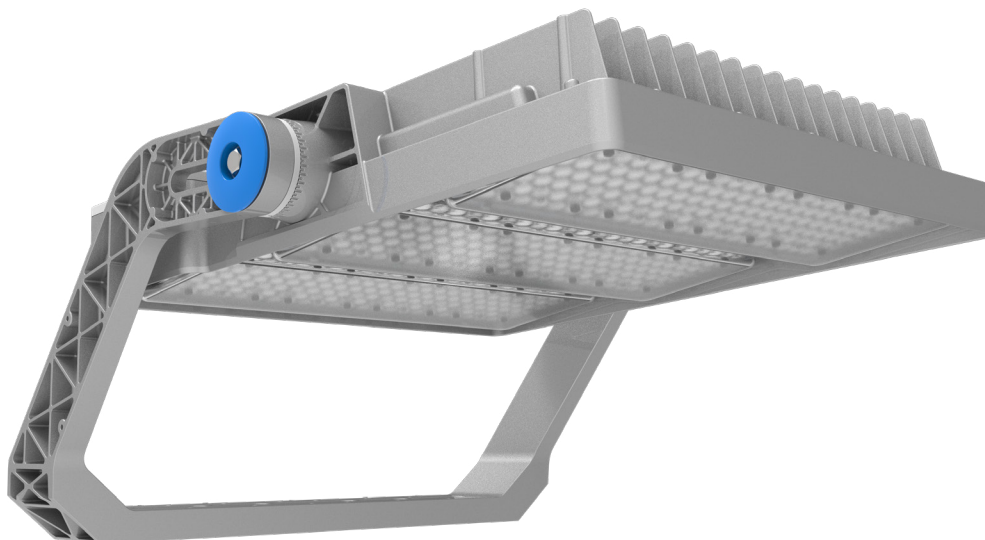
(7) Weight may vary depending on mounting bracket, light head and driver box selection.

Electrical Performance Data

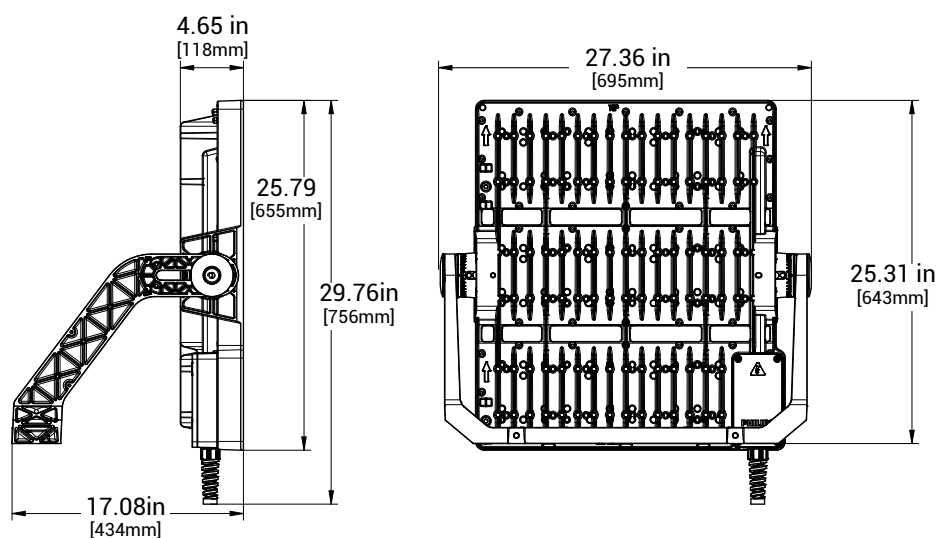
Product	Input Voltage (VAC)	Surge Protection	Nominal Input Power (W)	Input Current (A)	Power Factor (>60% Load)	THDi (>60% Load)	Inrush Period (ms)	Peak Inrush Current (A)
EPH-AV-03-1360L (LV Drivers)	120	10KV	1446	12.05	>0.9	<20%	20.08	19.80
	208	10KV	1393	6.70			20.08	19.80
	240	10KV	1393	5.80			20.08	19.80
EPH-AV-03-1360L (HV Drivers)	277	10KV	1408	5.08			9.28	25.03
	347	10KV	1394	4.02			9.28	25.03
	480	10KV	1389	2.89			9.28	25.03

Note: All the values are measured at 25C ambient

ARENAVISION LIGHT HEAD

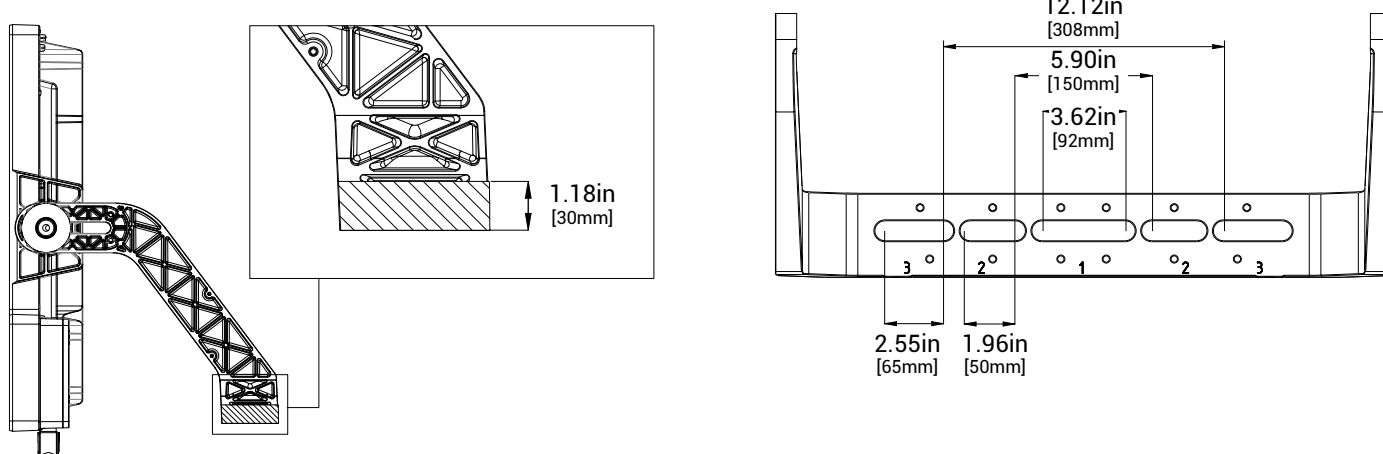


Dimensional and Mounting Details



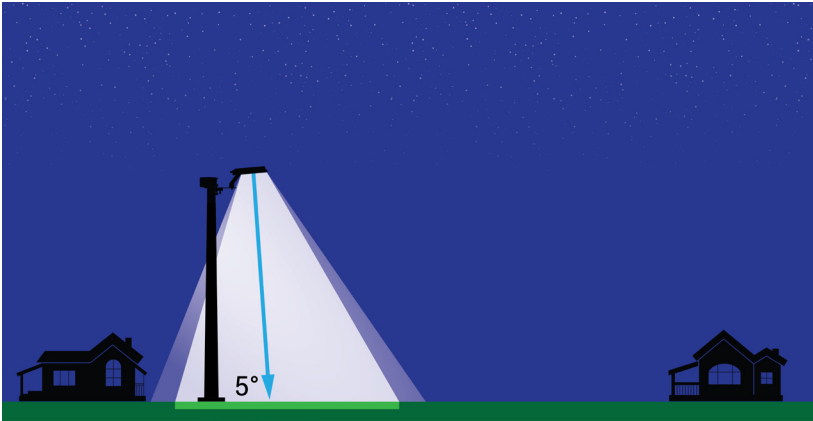
EPH-AV-03

Local Yoke Mount Details

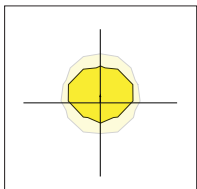


Optical Distribution

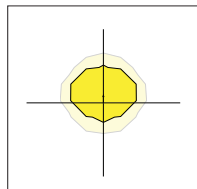
Symmetrical Lighting Distributions: I_{max} @5°



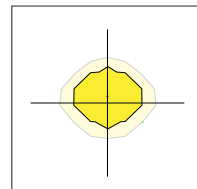
Symmetrical Optics



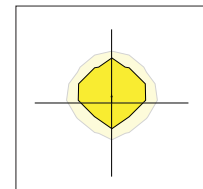
S2 = Symmetrical
NEMA 2



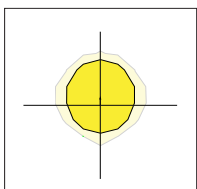
S3 = Symmetrical
NEMA 2



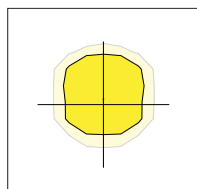
S4 = Symmetrical
NEMA 2



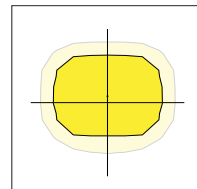
S5 = Symmetrical
NEMA 2



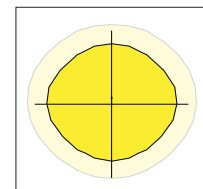
S6 = Symmetrical
NEMA 3



S7 = Symmetrical
NEMA 3



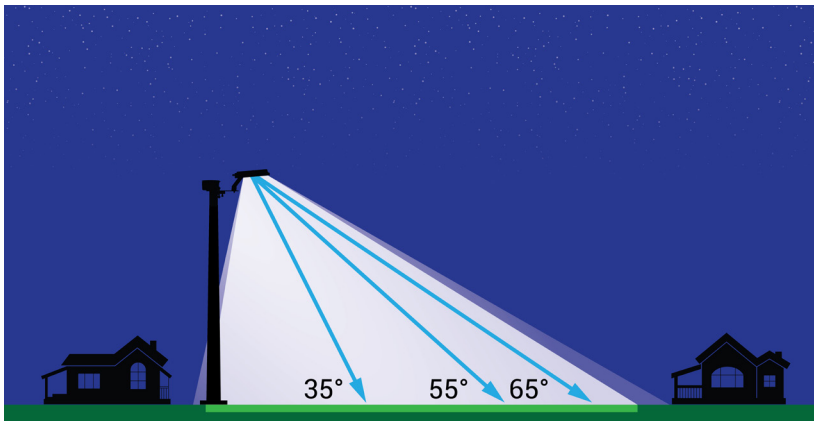
S8 = Symmetrical
NEMA 4



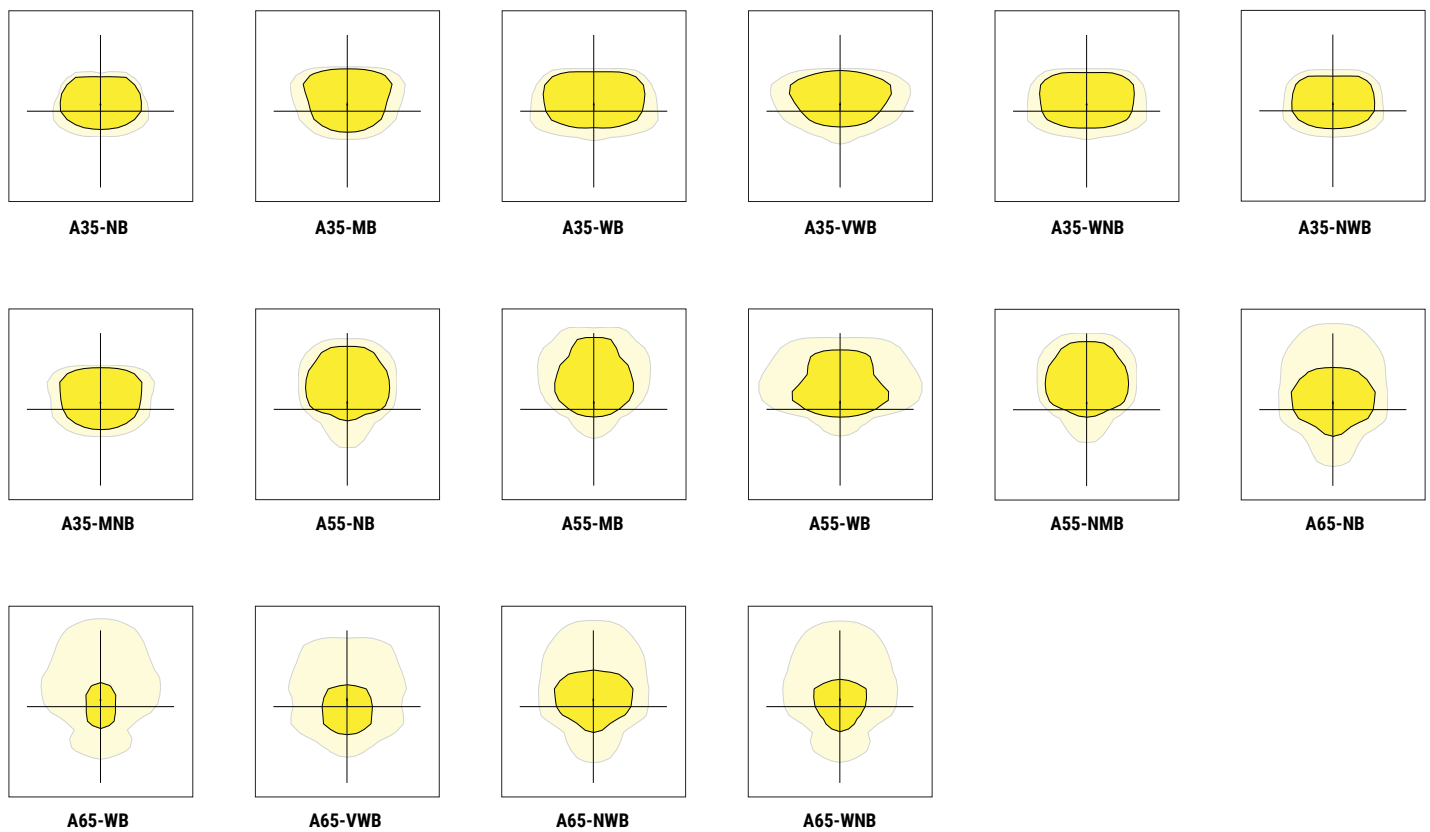
S9 = Symmetrical
NEMA 5

Optical Distribution

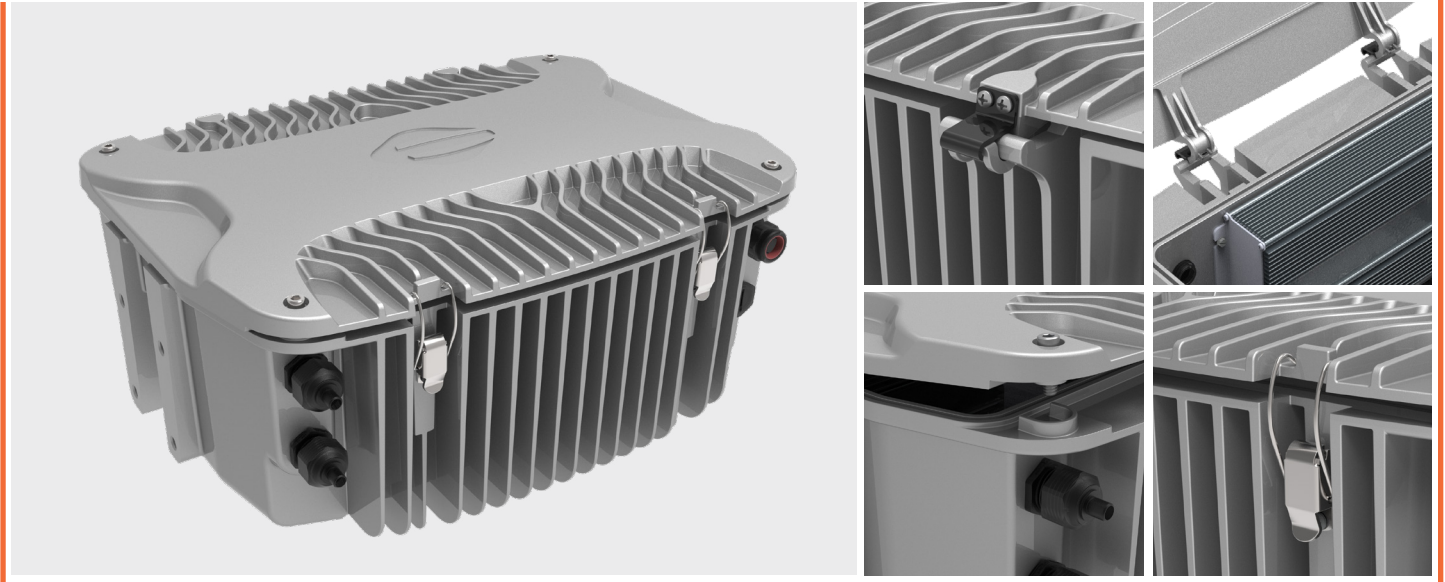
Asymmetrical Lighting Distributions: Different value of I_{max}



Asymmetrical Optics

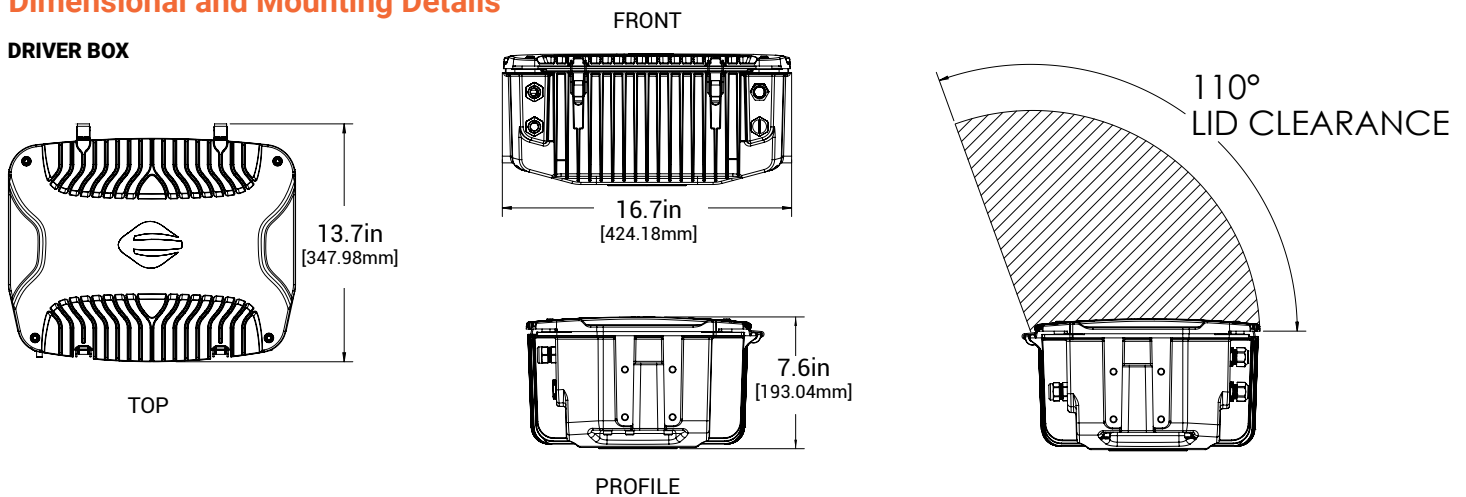


ARENAVISION DRIVER BOX

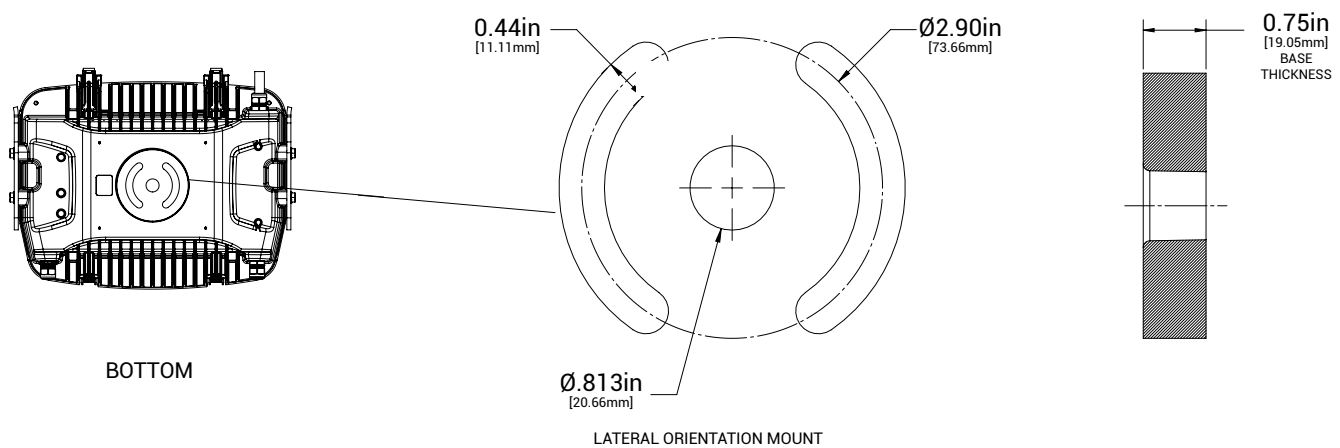


Dimensional and Mounting Details

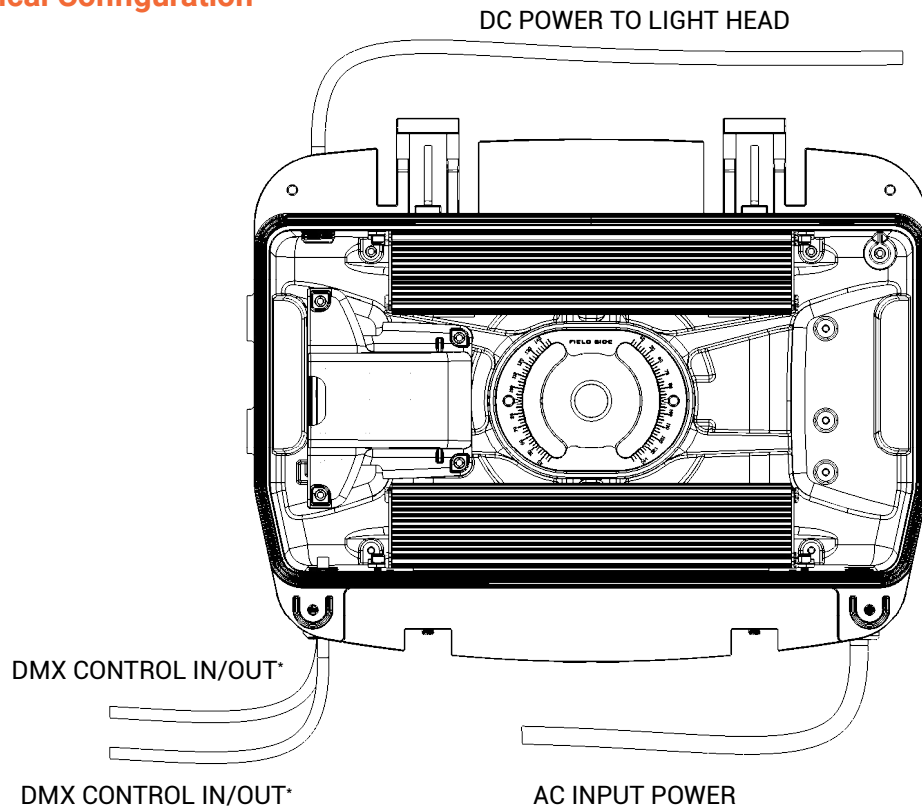
DRIVER BOX



MOUNTING: DRIVER BOX

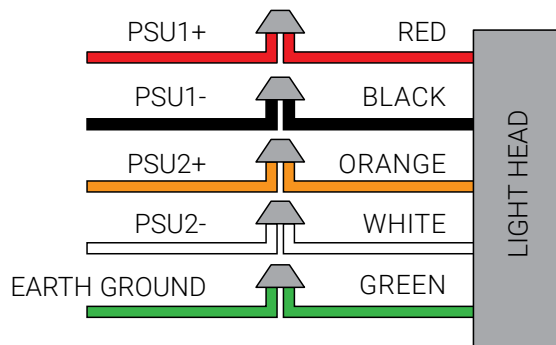


Electrical Configuration



*Note: DMX Control In/Out Wiring is optional in the LB configuration.

DC Cable to Light Head



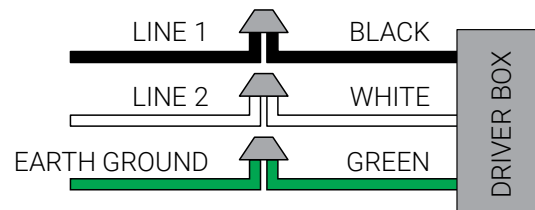
DC Cable to Light Head

DC CABLE Specification: Southwire seoprene or cooper lighting approved equivalent: BLACK/WHITE/RED/GREEN/ORANGE SOOW BLACK 105C 600V RATED 5 CONDUCTOR CABLE; UL, RoHS COMPLIANT, WATERPROOF AND SUNLIGHT RESISTANT

AC Input Power Cable

AC INPUT POWER CABLE SPECIFICATION:

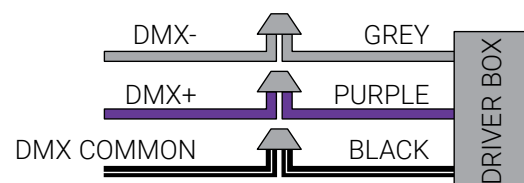
14AWG, 3 CONDUCTOR, 600V, SOOW, 90C, BLACK, UL LISTED, RoHS COMPLIANT, SUNLIGHT RESISTANT, WATER PROOF CABLE. WIRE COLORS :- BLACK, WHITE, GREEN



DMX Control Cable

DMX CABLE SPECIFICATION:

Gepco a Belden Brand, Flexible DMX512 Lighting Control Cable, 4 Conductor 24 AWG (7x32) stranded tinned copper, Foam PE insulation, foil shield plus 90% TC braid with 24 AWG stranded TC drain wire, all weather TPE jacket



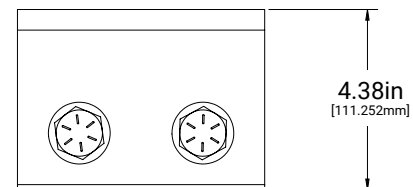
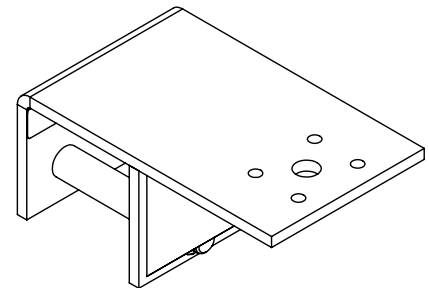
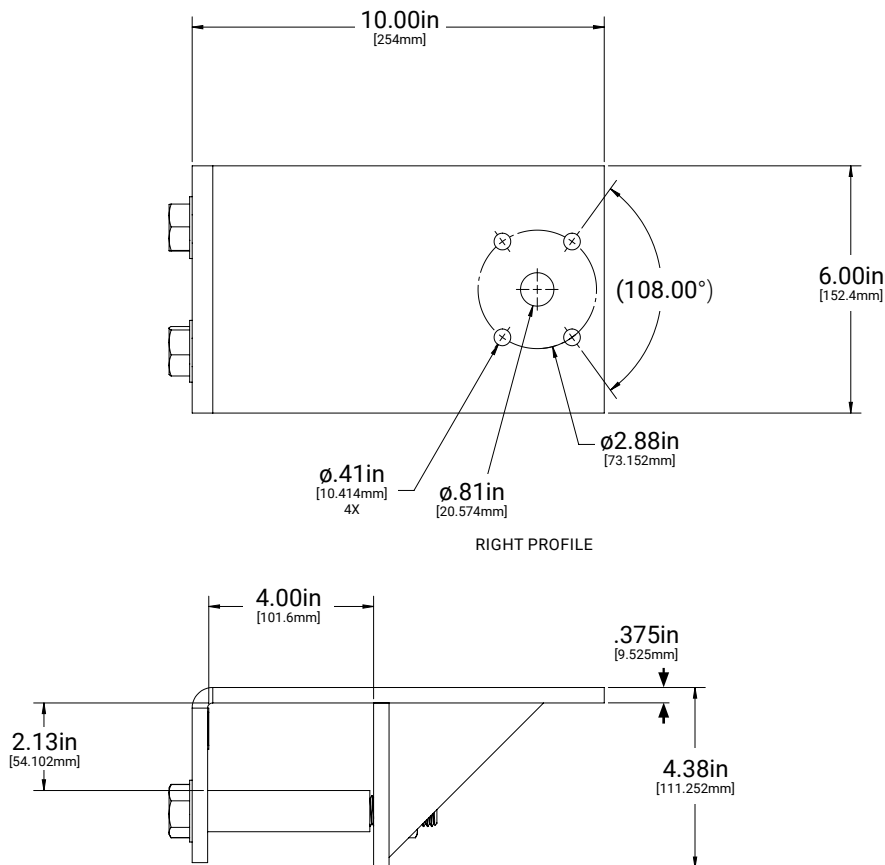
Ordering Information for Accessories

NOTE: A complete accessory order requires a selection entry for **Brand, Accessory, Option**.

SAMPLE ORDER NUMBER: **EPH-DVGBRD**

Brand	Accessory	Option	
Brand	Accessory	Option	Intended Use
EPH = Ephesus	DVGBRD = Diving Board ¹		Designed to be used with the ARENAVISION, LUMASPORT 8 INTEGRAL, LUMASPORT 8 LOCAL, LUMASPORT 8 PRISM LOCAL, LUMASPORT 16 LOCAL, and LUMASPORT 16 PRISM LOCAL luminaires only.
	Notes: (1) Additional mounting fastener hardware kit needed to attach a luminaire to the DVGBRD = Diving Board	Notes: (2) Option only available for use with HRDM34	

Diving Board (DVGBRD) Dimension and Part Details:



Diving Board Data

Model #	Weight (lbs)
DVGBRD	15.1
DVGBRD + HRDM34-025	16.1

Diving Board Parts

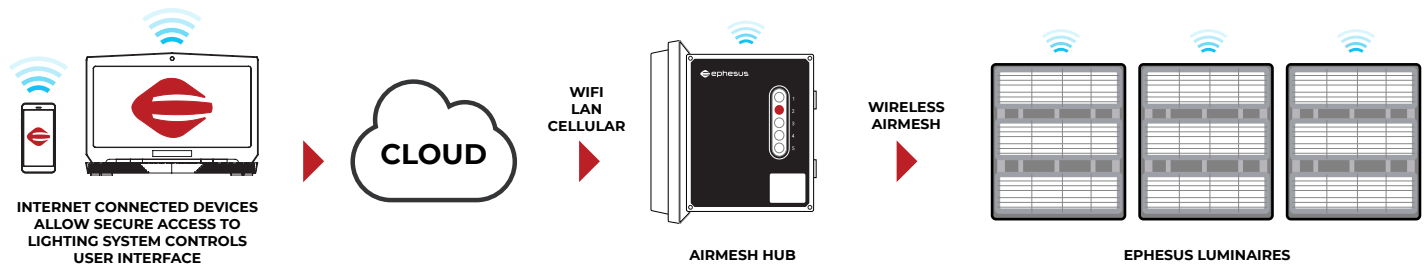
Description	Quantity
Welded Bracket	1
Bolt Sleeve	2
3/4in-10 X 6in Structural Hex Bolt, Hot Dip Galvanized	2
3/4in Steel Flat Washer, Hot Dip Galvanized	2
3/4in Ext Tooth Washer, Steel, Magni-565 Grey Polycoat	2
3/4in-10 Structural Steel Hex Nut, Hot Dip Galvanized	2
Stainless Shim	1

Example System Topology (Wireless AirMesh Controls)

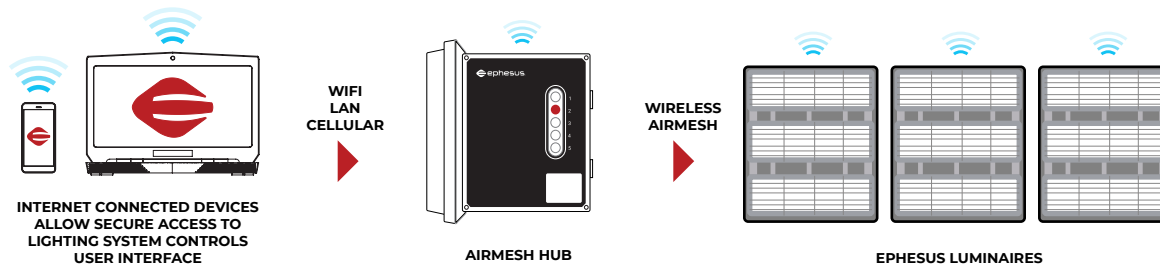
Example system topology showing the ARENAVISION System in a Wireless AirMesh Control Installation.

Note: Laptop and mobile device not included. A cellular network connection requires a cellular carrier network plan.

REMOTE ACCESS



ON SITE ACCESS



Example System Topology (Wired DMX Controls)

Example system topology showing the ARENAVISION System in a commonly used wired DMX Control Installation.

Refer to the specifications and limitations of your wired DMX control device before installing this configuration.

