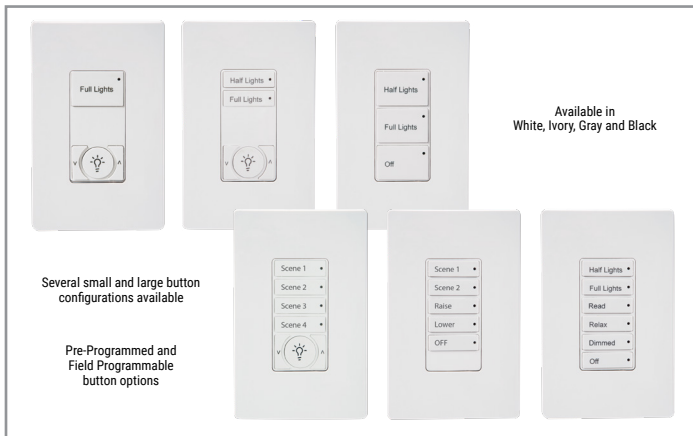


Project		Catalog #		Type	
Prepared by		Notes		Date	



# WaveLinX

## PRO Wallstation (W-Series)

A wireless 120/277VAC powered wallstation with configurable button options including toggle on/off, raise lower and presets scenes and LED indicators on each button

**Typical Applications**  
Office • Education • Hospitality • Retail • Industrial • Manufacturing

### Interactive Menu

- Order Information pages 2 and 3
- Button Options pages 2 and 3
- Additional Resources page 5
- Connected Systems page 7
- Product Warranty

**UL CERTIFIED** **FC** Part 15/CEC-003

- Meets latest ASHRAE Standard 90.1 requirements
- Meets latest IECC requirements
- Meets latest CEC Title 24 requirements

### Product Features

- WaveLinX Mobile App
- IEEE 802.15.4
- Device Security
- Customer Security
- Manual Dimmer
- Manually Switched ON/OFF

### Compatibility



## Overview

The PRO W-Series Wallstation is a wireless, 120/277 VAC powered wallstation with configurable buttons including toggle, on/off, raise lower, preset scenes and zone light levels. Each button's actions are configurable using the WaveLinX Mobile App. Each button has a LED indicator indicating the selected scenes or light level.

The PRO W-Series Wallstation's elegant design enhances the aesthetic of a space while allowing occupants to adjust the room's brightness levels based on their sensitivity and needs.

## Product Features & Benefits

- **Configurable button options** – Power toggle (on/off), raise/lower, scene and zone light level.
- **LED Indicator on each button** – Indicates the selected scene or light level
- **120/277VAC powered (neutral required)** – No battery replacement required
- **Button actions configurable via software** – Customize the actions of each button using WaveLinX Mobile Application or WaveLinX CORE Lighting App

## Order Information

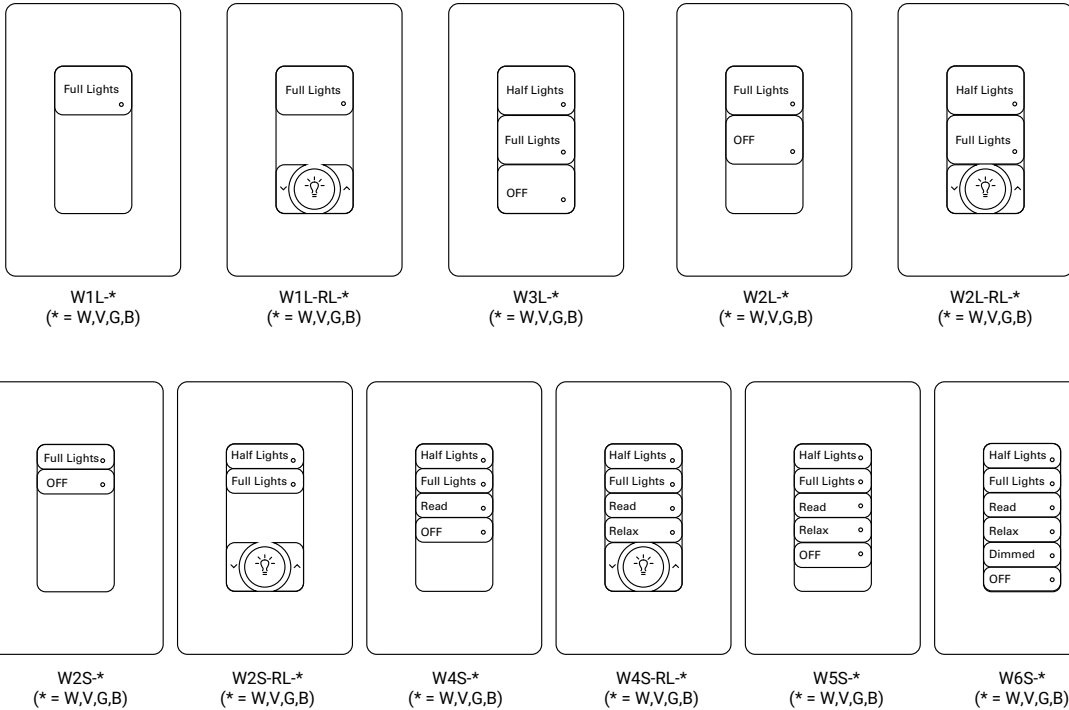
The PRO W-Series wallstation communicates with other PRO devices via the WaveLinx Area Controller.

The wallstation is used to provide local and multi-level control in spaces and can be mapped to multiple zones in an area to create customizable light levels from simple control to architectural.

Catalog Number

## Pre-Programmed Wallstations

Catalog Number	Description	Color Options	Button Engraving
W1L -*	WaveLinx Pro, 1 Button large wallstation	*=W - White, V - Ivory, G - Gray, B - Black	<b>BLANK</b> = Standard Engraving <b>ENGRV</b> = Customer Specified Engraving
W1L-RL -*	WaveLinx Pro, 1 Button large (RAISE/LOWER) wallstation	*=W - White, V - Ivory, G - Gray, B - Black	
W2L -*	WaveLinx Pro, 2 Button large wallstation	*=W - White, V - Ivory, G - Gray, B - Black	
W2L-RL -*	WaveLinx Pro, 2 Button large (RAISE/LOWER) wallstation	*=W - White, V - Ivory, G - Gray, B - Black	
W3L -*	WaveLinx Pro, 3 Button large wallstation	*=W - White, V - Ivory, G - Gray, B - Black	
W2S -*	WaveLinx Pro, 2 Button small wallstation	*=W - White, V - Ivory, G - Gray, B - Black	
W2S-RL -*	WaveLinx Pro, 2 Button small (RAISE/LOWER) wallstation	*=W - White, V - Ivory, G - Gray, B - Black	
W4S -*	WaveLinx Pro, 4 Button small wallstation	*=W - White, V - Ivory, G - Gray, B - Black	
W4S-RL -*	WaveLinx Pro, 4 Button small (RAISE/LOWER) wallstation	*=W - White, V - Ivory, G - Gray, B - Black	
W5S -*	WaveLinx Pro, 5 Button small wallstation	*=W - White, V - Ivory, G - Gray, B - Black	
W6S -*	WaveLinx Pro, 6 Button small wallstation	*=W - White, V - Ivory, G - Gray, B - Black	
<b>Notes</b>	<b>Notes</b>		
Field Programmable models are standard engraving options that require field programming through the WaveLinx Pro Mobile Application.	All WaveLinx Pro Wallstations include standard engraving and color matching screwless single gang wallplates. For custom engraving use the configurator tool within the FlashPro tool.		



### Default engraving & light levels

**Half Lights** Scene 3 = 50%  
**Full Lights** Scene 1 = 100%  
**Read** Scene 2 = 70%  
**Relax** Scene 4 = 30%  
**Dimmed** Scene 5 = 10%  
**Night** Scene 6 = 1%  
**Off** Scene 0 = Off

### ON/OFF Raise/Lower buttons

Lowers Area light level  Raise Area light level  
 Toggles Scene 1 & Scene 0

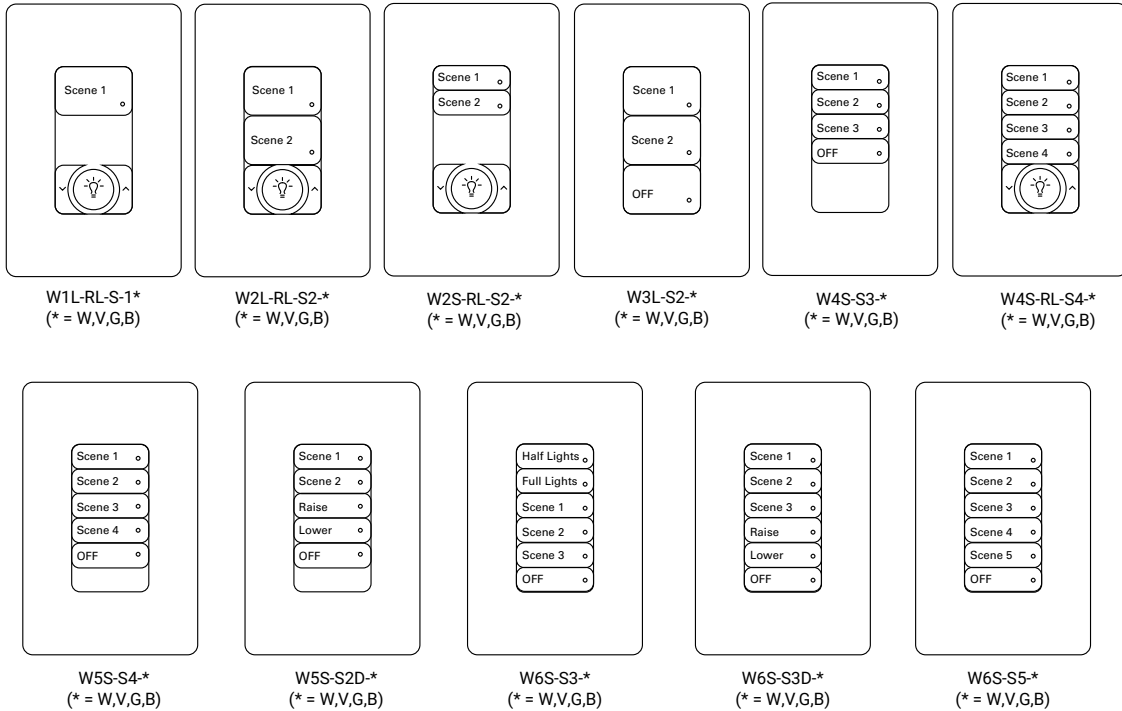
### Button programming options via WaveLinx Mobile Application

Scene Selection  
 Scene Toggle  
 Zone Toggle  
 Zone Level  
 Raise  
 Lower  
 HR Release  
 No Action

Catalog Number

## Field Programmable Wallstations

Catalog Number	Description	Color Options	Button Engraving
<b>W1L-RL-S1-*</b>	WaveLinx Pro, 1 Button large, field programmable (RAISE/LOWER) wallstation	*=W - White, V - Ivory, G - Gray, B - Black	<b>BLANK</b> = Standard Engraving <b>ENGRV</b> = Customer Specified Engraving
<b>W2L-RL-S2-*</b>	WaveLinx Pro, 2 Button large, field programmable (RAISE/LOWER) wallstation	*=W - White, V - Ivory, G - Gray, B - Black	
<b>W2S-RL-S2-*</b>	WaveLinx Pro, 2 Button small, field programmable (RAISE/LOWER) wallstation	*=W - White, V - Ivory, G - Gray, B - Black	
<b>W3L-S2-*</b>	WaveLinx Pro, 3 Button large, field programmable wallstation	*=W - White, V - Ivory, G - Gray, B - Black	
<b>W4S-S3-*</b>	WaveLinx Pro, 4 Button small, field programmable wallstation	*=W - White, V - Ivory, G - Gray, B - Black	
<b>W4S-RL-S4-*</b>	WaveLinx Pro, 4 Button small, field programmable (RAISE/LOWER) wallstation	*=W - White, V - Ivory, G - Gray, B - Black	
<b>W5S-S4-*</b>	WaveLinx Pro, 5 Button small, field programmable wallstation	*=W - White, V - Ivory, G - Gray, B - Black	
<b>W5S-S2D-*</b>	WaveLinx Pro, 5 Button small, field programmable (RAISE/LOWER) wallstation	*=W - White, V - Ivory, G - Gray, B - Black	
<b>W6S-S3-*</b>	WaveLinx Pro, 6 Button small, field programmable wallstation	*=W - White, V - Ivory, G - Gray, B - Black	
<b>W6S-S3D-*</b>	WaveLinx Pro, 6 Button small, field programmable (RAISE/LOWER) wallstation	*=W - White, V - Ivory, G - Gray, B - Black	
<b>W6S-S5-*</b>	WaveLinx Pro, 6 Button small, field programmable wallstation	*=W - White, V - Ivory, G - Gray, B - Black	
<b>Notes</b>	<b>Notes</b>		
Field Programmable models are standard engraving options that require field programming through the WaveLinx Pro Mobile Application.	All WaveLinx Pro Wallstations include standard engraving and color matching screwless single gang wallplates. For custom engraving use the configurator tool within the FlashPro tool.		



## Button Kits

Catalog Number

### Pre-Programmed Button Kit

Catalog Number	Description	Color Options	Button Engraving
<b>W1L -BTS-*</b>	WaveLinx Pro, 1 Button large wallstation - BUTTONS ONLY	*=W - White, V - Ivory, G - Gray, B - Black	<b>BLANK</b> = Standard Engraving <b>ENGRV</b> = Customer Specified Engraving
<b>W1L-RL -BTS-*</b>	WaveLinx Pro, 1 Button large (RAISE/LOWER) wallstation - BUTTONS ONLY	*=W - White, V - Ivory, G - Gray, B - Black	
<b>W2L -BTS-*</b>	WaveLinx Pro, 2 Button large wallstation - BUTTONS ONLY	*=W - White, V - Ivory, G - Gray, B - Black	
<b>W2L-RL -BTS-*</b>	WaveLinx Pro, 2 Button large (RAISE/LOWER) wallstation - BUTTONS ONLY	*=W - White, V - Ivory, G - Gray, B - Black	
<b>W3L -BTS-*</b>	WaveLinx Pro, 3 Button large wallstation - BUTTONS ONLY	*=W - White, V - Ivory, G - Gray, B - Black	
<b>W2S -BTS-*</b>	WaveLinx Pro, 2 Button small wallstation - BUTTONS ONLY	*=W - White, V - Ivory, G - Gray, B - Black	
<b>W2S-RL -BTS-*</b>	WaveLinx Pro, 2 Button small (RAISE/LOWER) wallstation - BUTTONS ONLY	*=W - White, V - Ivory, G - Gray, B - Black	
<b>W4S -BTS-*</b>	WaveLinx Pro, 4 Button small wallstation - BUTTONS ONLY	*=W - White, V - Ivory, G - Gray, B - Black	
<b>W4S-RL -BTS-*</b>	WaveLinx Pro, 4 Button small (RAISE/LOWER) wallstation - BUTTONS ONLY	*=W - White, V - Ivory, G - Gray, B - Black	
<b>W5S -BTS-*</b>	WaveLinx Pro, 5 Button small wallstation - BUTTONS ONLY	*=W - White, V - Ivory, G - Gray, B - Black	
<b>W6S -BTS-*</b>	WaveLinx Pro, 6 Button small wallstation - BUTTONS ONLY	*=W - White, V - Ivory, G - Gray, B - Black	
<b>Notes</b> Field Programmable models are standard engraving options that require field programming through the WaveLinx Pro Mobile Application.	<b>Notes</b> All WaveLinx Pro Wallstations include standard engraving and color matching screwless single gang wallplates. Buttons Only.		

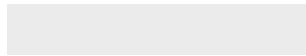
Catalog Number

### Field Programmable Button Kit

Catalog Number	Description	Color Options	Button Engraving
<b>W1L -RL -S1-BTS-*</b>	WaveLinx Pro, 1 Button large, field programmable (RAISE/LOWER) wallstation - BUTTONS ONLY	*=W - White, V - Ivory, G - Gray, B - Black	<b>BLANK</b> = Standard Engraving <b>ENGRV</b> = Customer Specified Engraving
<b>W2L -RL -S2-BTS-*</b>	WaveLinx Pro, 2 Button large, field programmable (RAISE/LOWER) wallstation - BUTTONS ONLY	*=W - White, V - Ivory, G - Gray, B - Black	
<b>W2S -RL -S2-BTS-*</b>	WaveLinx Pro, 2 Button small, field programmable (RAISE/LOWER) wallstation - BUTTONS ONLY	*=W - White, V - Ivory, G - Gray, B - Black	
<b>W3L -S2-BTS-*</b>	WaveLinx Pro, 3 Button large, field programmable wallstation - BUTTONS ONLY	*=W - White, V - Ivory, G - Gray, B - Black	
<b>W4S -S3-BTS-*</b>	WaveLinx Pro, 4 Button small, field programmable wallstation - BUTTONS ONLY	*=W - White, V - Ivory, G - Gray, B - Black	
<b>W4S -RL -S4-BTS-*</b>	WaveLinx Pro, 4 Button small, field programmable (RAISE/LOWER) wallstation - BUTTONS ONLY	*=W - White, V - Ivory, G - Gray, B - Black	
<b>W5S -S4-BTS-*</b>	WaveLinx Pro, 5 Button small, field programmable wallstation - BUTTONS ONLY	*=W - White, V - Ivory, G - Gray, B - Black	
<b>W5S -S2D-BTS-*</b>	WaveLinx Pro, 5 Button small, field programmable (RAISE/LOWER) wallstation - BUTTONS ONLY	*=W - White, V - Ivory, G - Gray, B - Black	
<b>W6S -S3-BTS-*</b>	WaveLinx Pro, 6 Button small, field programmable wallstation - BUTTONS ONLY	*=W - White, V - Ivory, G - Gray, B - Black	
<b>W6S -S3D-BTS-*</b>	WaveLinx Pro, 6 Button small, field programmable (RAISE/LOWER) wallstation - BUTTONS ONLY	*=W - White, V - Ivory, G - Gray, B - Black	
<b>W6S -S5-BTS-*</b>	WaveLinx Pro, 6 Button small, field programmable wallstation - BUTTONS ONLY	*=W - White, V - Ivory, G - Gray, B - Black	
<b>Notes</b> Field Programmable models are standard engraving options that require field programming through the WaveLinx Pro Mobile Application.	<b>Notes</b> All WaveLinx Pro Wallstations include standard engraving and color matching screwless single gang wallplates. Buttons Only.		

**Required Accessories**

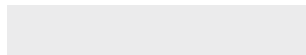
All WaveLinx Pro connected lighting (WCL) system accessories require at least one WaveLinx Area Controller (WAC2) for communications. Ensure the bill of material includes one of the following components.

**Catalog Number**

Catalog Number	Description
<b>WAC2-POE</b>	WaveLinx Area Controller G2, PoE powered
<b>WAC2-120</b>	WaveLinx Area Controller G2 with 120VAC to PoE Injector

**Optional Accessories**

For connection to 120VAC outlets.

**Catalog Number**

Catalog Number	Description
<b>WPOE2-120</b>	120VAC to PoE Injector

**Product Specifications****Mechanical**

**Size:** 4.75"H x 3.35"W x 1.85"D (121mm x 83mm x 47mm)

**Environment:**

- **Operating temperature:** 32°F to 113°F (0°C to 45°C)
- **Storage temperature:** 32°F to 167°F (0°C to 75°C)
- **Relative humidity operating:** 5% to 95% non-condensing
- For indoor use only

**Mounting:** Standard decorator opening

**Color:** White, Ivory, Gray and Black available

**Electrical**

**Input power:** 120-277VAC (neutral wire required)

**Input current:** 20mA (120V), 15mA (277V)

**Hardware Specifications****Status Indicators:**

- Button LEDs - White (1 per scene button)
- LED functionality
  - Indication of wireless network join request
  - Indication of wireless network connection
  - Scene indication of operations

**Button Configuration:**

- Large buttons 1-3
- Small buttons 2,4,5,6

**Software Specifications**

- Each button programmable to trigger or toggle Scene or Zone
- Default values when joined to an area via WaveLinx Pro Mobile Application
- Models available with dominant button 50% light level
- Fade rates and scene transitions are programmable

**Wireless Specifications**

**Radio:** 2.4GHz

**Standard:** IEEE 802.15.4

**Transmitter Power:** + 7dBm

**Configuration type:** Router, End Point

**Range:** 150ft (50m) LOS through 2 interior walls of standard construction

Note - metal faceplates will reduce wireless range

**System Performance**

**Maximum number of Devices:** 200 per WaveLinx Area Controller (best practice 150 devices)

**Standards/Ratings\***

- cULus Certified
- FCC Part 15
- Meets latest ASHRAE Standard 90.1 requirements
- Meets latest IECC requirements
- Meets latest CEC Title 24 requirements

**Warning**

- This product is not intended to be used in applications involving the use of ammonia-based or VOC cleaners.
- Use of ammonia-based or VOC cleaners on this device must be avoided. Prolonged use may cause loss of integrity and expose electrified components. If this occurs, turn OFF power to the unit and replace.
- For detailed cleaning guidelines please refer to: Controls Care and Maintenance instructions at the end of this document.

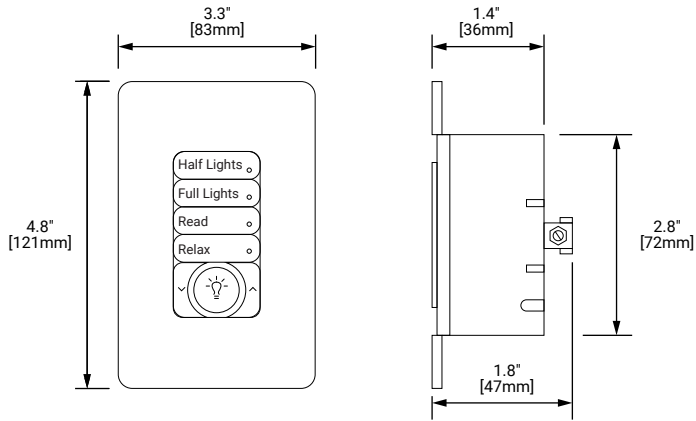
**Warranty**

Five year warranty standard

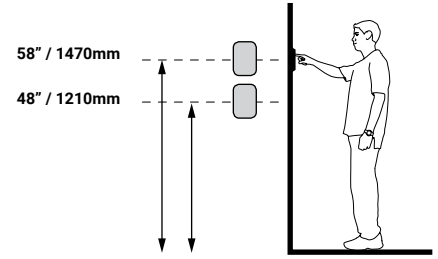


Download the WaveLinx Mobile App from either the Google Play or Apple Store®

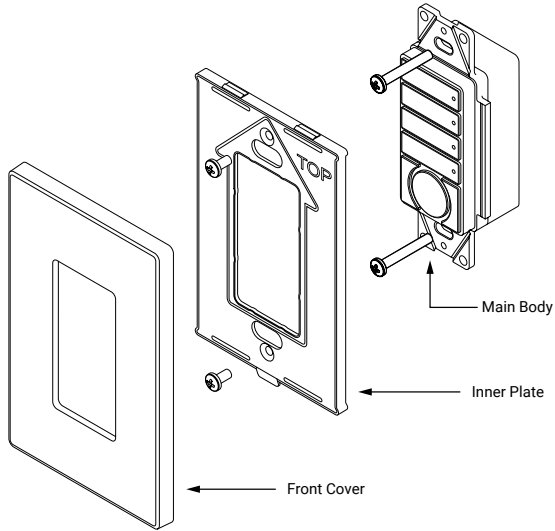
## Dimensional Details



## Mounting Height



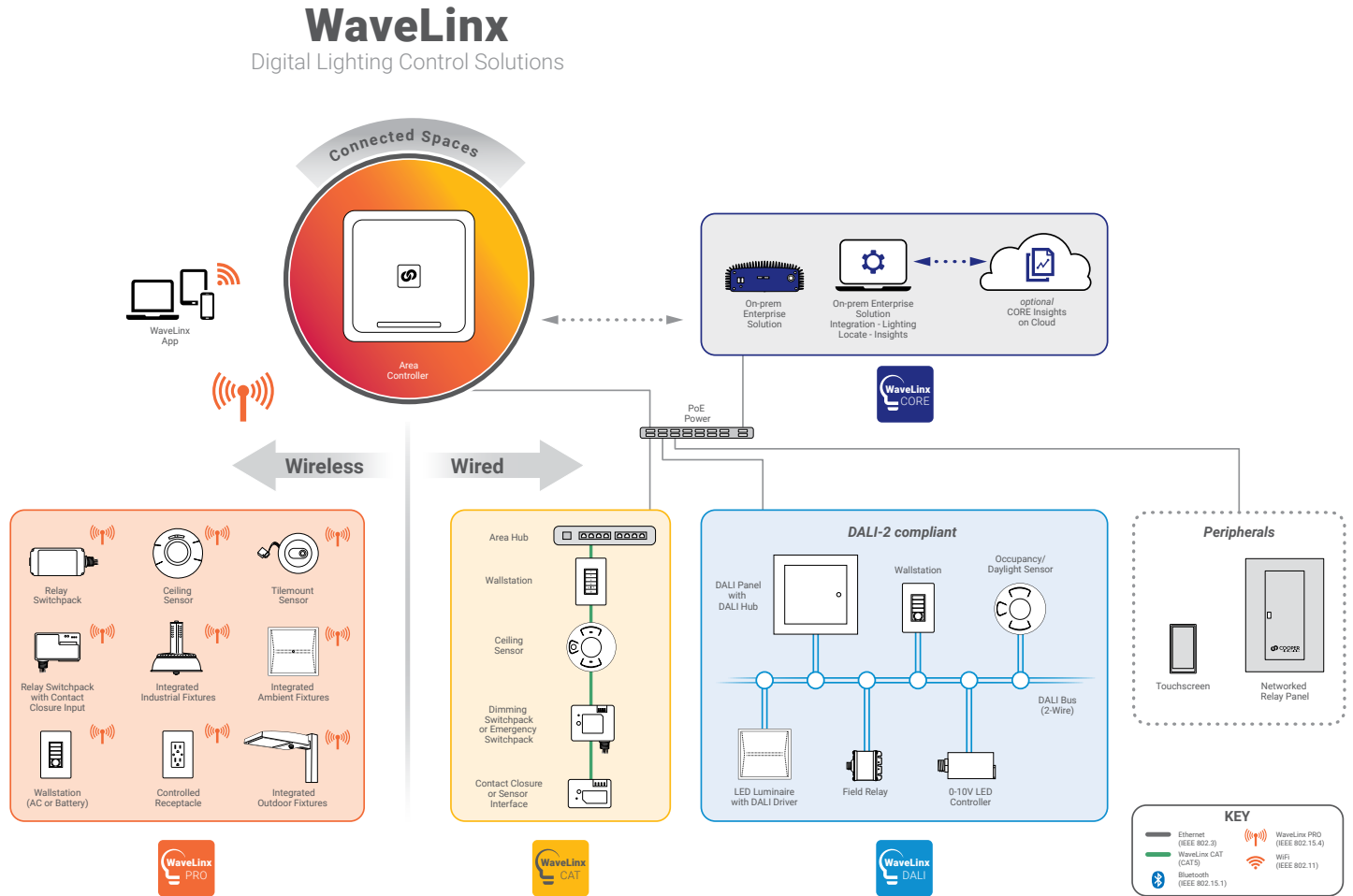
## Installation



## System Diagram:

This diagram shows the main components of the WaveLinx connected lighting system with WaveLinx DALI, CAT and PRO devices. The PRO devices communicate using wireless mesh technology based on the IEEE 802.15.4 standard. A PoE LAN connection for each WaveLinx Area Controller (WAC) is required for power and data access to the building lighting network. The CAT devices communicate over the category 5 based communication bus and control the light fixtures using a relay (on/off) and 0-10V output (dim/raise). WaveLinx DALI devices communicate via a DALI bus (2 wires), which connects various components including DALI fixtures, a DALI DAC (DALI to 0-10V converter), DALI field relays, DALI wallstations, and DALI occupancy sensors. WaveLinx Area Controllers (WAC) communicate with WaveLinx CORE Apps over the Ethernet network.

[View WaveLinx Network and IT Guidance Technical Guide](#)



**Control Systems**  
• WaveLinx



Cooper Lighting Solutions has developed recommended guidelines for cleaning our products that will not impact the operation or finish of the product.

### Recommended cleaning tips:

- **Never spray any fluids directly into the device.**
- **Use of ammonia-based or VOC cleaners on this device must be avoided.** Prolonged use may cause loss of integrity and expose electrified components. If this occurs, turn OFF power to the unit and replace.
- **Use a damp rag or single-use wipe** to avoid excess liquid penetrating the device.
- Be sure to wipe up remaining excess liquid after cleaning.
- Ensure the cleaning agent used does not have harsh chemicals such as bleach, ammonia, highly alkaline or concentrated acids (such as hydrochloric acid that can be found in household cleaners such as toilet bowl cleaners, bathroom tile and porcelain cleaners) as they could damage the device, causing them to become brittle and discolored.
- Cooper Lighting Solutions recommends the use of a mild liquid detergent and water to clean the devices. Single use wipes (e.g. Lysol brand or equivalent) are acceptable to use for cleaning the devices, however the single-use wipes **cannot contain bleach, ammonia, highly alkaline or concentrated acids.**

### Recommended cleaning instructions:

- **Never spray any fluids directly into the device.**
- Apply the mild liquid detergent to a damp cloth or paper towel. Single use wipes (e.g. Lysol brand or equivalent) are acceptable to use for cleaning the devices, however single-use wipes cannot contain bleach, ammonia, highly alkaline or concentrated acids.
- If excess liquid is present, remove by wringing out the cloth or paper towel to avoid liquid penetration into the device.
- Clean the Cooper Lighting Solutions device by wiping over the surface with the damp cloth.
- Remove an excess liquid remaining on the device with a dry cloth or paper towel.

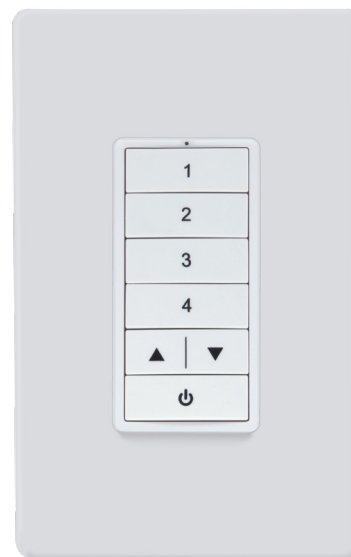


image for reference only



### WARNING

***This product is not intended for use in applications involving the use of ammonia-based or VOC cleaners.***

***Prolonged use may cause loss of integrity and expose electrified components.***

***If this occurs, turn OFF power to the unit and replace.***