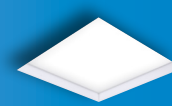
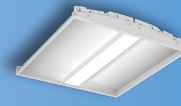
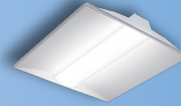
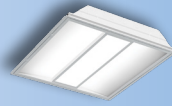


Good

Better

Best

Click on products to learn more



		Class RX/ZX	Class D3X	Class R2X	Bridge	Perceive	InDepth	Divide
APPLICABILITY	Education	★★★	★★	★★★	★★	★★★	★★★	★★
	Office	★★★	★★★	★★★	★★★	★★★	★★★	★★★
	Healthcare	★	★★	★★★	★	★★★	★★	★★★
	Retail	★★	★★	★★	★★	★★	★★	★
FEATURES / PERFORMANCE	Sizes	1x4, 2x2, 2x4	1x4, 2x2, 2x4	1x4, 2x2, 2x4, Metric	1x4, 2x2, 2x4, Metric	1x4, 2x2, 2x4	1x4, 2x2, 2x4, 4x4	1x4, 2x2, 2x4
	lm/W (Max)	145	139	134	118	137	127	137
	Lumens (Max)	7600	7800	8000	7300	9,000	9000	7500
	Life (@60K)	L94	L93	L87	L80	L85	L84	L87
	Lens	Round (R), Flat (Z) Frost - Smooth	Frost - Smooth, Perf Inlays	Round (R), Frost - Smooth	Acrylic (Wavestream), Perf Inlays	Acrylic (Perceive Optics)	1", 2" Cube Regress 1", 2", 3" Cube Drop 2" Single & Double Curve Regress & Drop Sweep Regress & Drop	Acrylic (Wavestream), Specular, Diffuse
	Emergency	Integrated	Integrated	Integrated	Integrated	Integrated	Integrated, Indicator is Remote	Integrated
	CRI	80+ / 90	80+ / 90	80+ / 90	80+ / 90	80+ / 90	80+	80+ / 90
	Sensor Location	Integrated	Integrated	Tile Mount	Integrated	Integrated	Tile Mount	Integrated
	DLC	Standard	Standard	Standard	Standard	Premium	Premium	Premium
	Air Return	Yes	None	Yes	Yes, concealed	None	No	None
	VividTune™	Tunable White	Tunable White	No	No	Yes	No	No
INTEGRATED CONTROLS	WaveLinX Lite	✓	✓		✓	✓	✓	
	WaveLinX Pro	✓	✓		✓	✓	✓	✓
	WaveLinX, No Sensor	✓	✓		✓	✓	✓	
	Enlighted	✓	✓	✓	✓	✓	✓	✓
	DLVP	✓	✓		✓	✓	✓	

Notes: 1. ★★★ = high applicability, ★★ = medium applicability, ★ = low applicability, blank = non-applicable