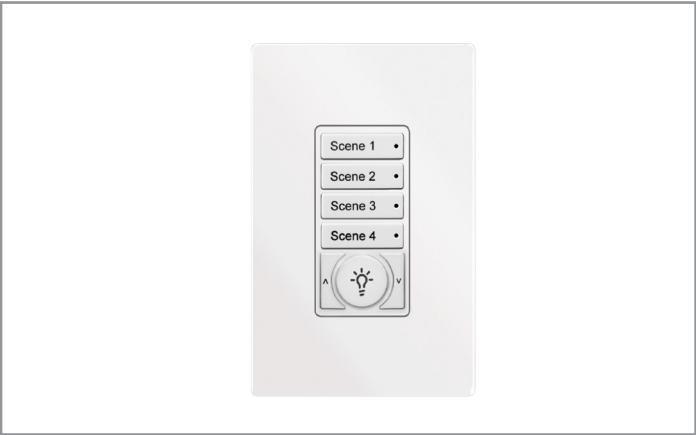


Project		Catalog #		Type	
Prepared by		Notes		Date	



WaveLinx Wired

Digital Wallstation

Two wire digital, multi-scene wallstation

Typical Applications

Office • Education • Hospitality • Retail • Industrial • Manufacturing

Interactive Menu

- Ordering Information page 2
- Additional Resources page 3
- Wiring Diagrams page 4
- Connected Systems page 5
- Product Warranty

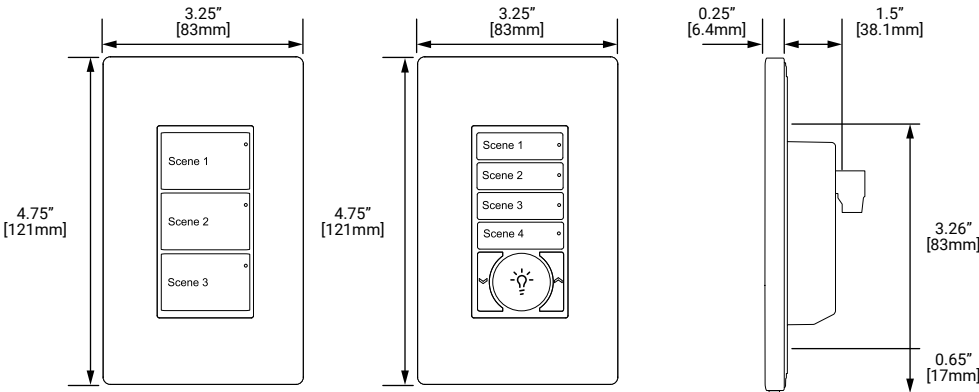
Product Features



Top Product Features

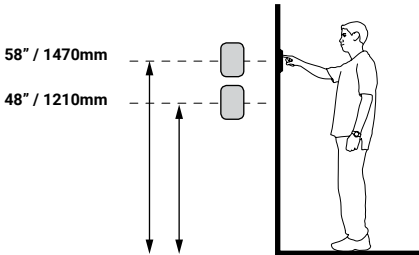
- Powered from the WaveLinx wired local bus (via SCMD4)
- Flexible configuration of zones, scenes, areas with raise/lower
- Decorator style color match wallplate included
- Options to meet Buy American Act requirements

Dimensional Details



- 10 standard button configurations
- Mounts to standard NEMA style Backbox, standard decorator insert size

Mounting Height



 additional product diagrams

Order Information

SAMPLE ORDER NUMBER: **FDW-2TLB-RL-W**

This is an accessory for the WaveLinx wired system. When ordering, specify the wallstation as a separate system accessory.

Note: For custom configurations or custom engraving, use the configurator tool within the FlashPro tool.

Catalog Number

Domestic Preferences ⁽¹⁾	Series	Number of Buttons	Button Size	Raise/Lower/ON/OFF	Color	Button Engraving
[Blank] = Standard BAA = Buy American Act	FDW = Digital Wallstation	1-3 = Large Buttons (TLB), no Raise/Lower, ON/OFF 1-2 = Large Buttons (TLB), Raise/Lower/ON/OFF 4,5,6 = Small Buttons (TSB), no Raise/Lower/ON/OFF 4 = Small Buttons (TSB), Raise/Lower/ON/OFF	TLB = Large Buttons TSB = Small Buttons	Blank = No Raise/Lower/ON/OFF RL = Raise/Lower/ON/OFF	W = White B = Black V = Ivory G = Gray R = Red	[BLANK] = Standard Engraving ENGRV = Customer Specified Engraving

Notes




(1) Only product configurations with this designated prefix are built to be compliant with the Buy American Act of 1933 (BAA). Please refer to [DOMESTIC PREFERENCES](#) website for more information. Components shipped separately may be separately analyzed under domestic preference requirements.





(2) DW includes standard "Scene" engraving and color matching screwless single gang wallplate.

Buttons Only

Catalog Number

Series	Number of Buttons	Button Size	Raise/Lower/ON/OFF	Color	Button Engraving
FDW-BTS = Digital Wallstation - BUTTONS ONLY	1-3 = Large Buttons (TLB), no Raise/Lower, ON/OFF 1-2 = Large Buttons (TLB), Raise/Lower/ON/OFF 4,5,6 = Small Buttons (TSB), no Raise/Lower/ON/OFF 4 = Small Buttons (TSB), Raise/Lower/ON/OFF	TLB = Large Buttons TSB = Small Buttons	Blank = No Raise/Lower/ON/OFF RL = Raise/Lower/ON/OFF	W = White B = Black V = Ivory G = Gray R = Red	BLANK = Standard Engraving ENGRV = Customer Specified Engraving
			Notes For custom configurations or custom engraving, use the configurator tool within the FlashPro tool.		

Description	Image
1 Large Button FDW-1TLB-W	
1 Large Button Raise & Lower ON/OFF FDW-1TLB-RL-W	
2 Large buttons FDW-2TLB-W	
2 Large buttons Raise & Lower ON/OFF FDW-2TLB-RL-W	

Description	Image
3 Large buttons ON/OFF FDW-3TLB-W	
4 Small buttons FDW-4TSB-W	
4 Small buttons ON/OFF Raise & Lower FDW-4TSB-RL-W	
6 Small buttons FDW-6TSB-W	

*One single gang color matching wallplate included

Product Specifications

Functionality

- Integrated two wire communication interface
- All device settings (including timers and groups) are programmable through software, no physical adjustments needed
- Create virtual groups for flexible configurations and controls
- Draws power from communications bus to simplify wiring
- Suitable for standard single or multi-gang NEMA wall box with decorator style wallplates

Button Functionality

Buttons may be configured through the software as follows:

- Click Action:
 - Separate press and release actions can be programmed to control zones, scenes and areas as well as unique fade times and any action below.
- No Action
- Zone (Channel) Toggle
- Select Scene
- Zone (Channel) Raise
- Zone (Channel) Lower
- Start/Pause/Stop a sequence
- Enable/Disable device
- Virtual Event
- and more

Mechanical

Mounting: Standard decorator opening

Operating Environment: 32° F to 104° F (0° C to 40° C). For indoor use only

Electrical

Input Voltage: 9.5 VDC - 22.5 VDC supplied by the communication bus

Current Draw: 3.75 mA per device

Wiring: Two-wire, non-polarized control

Standards/Ratings

- Manufactured in an ISO 9001 certified factory
- Meets ASHRAE Standard 90.1 requirements
- Meets IECC 2015 requirements
- Meets CEC Title 24 requirements

Product Safety:

- IEC 60950-1
- UL 60950-1
- EN 60950-1
- CAN/CSA-C22.2 No. 60950-1

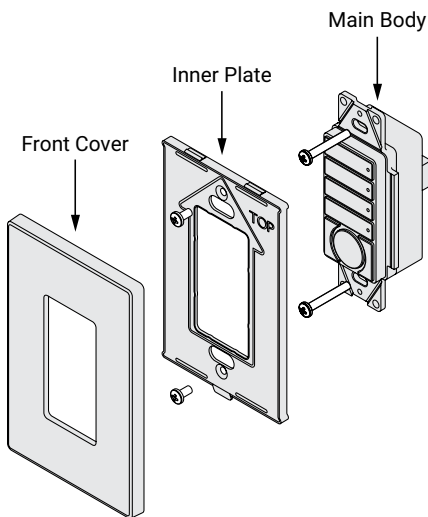
Warning

- This product is not intended to be used in applications involving the use of ammonia-based or VOC cleaners.
- Use of ammonia-based or VOC cleaners on this device must be avoided. Prolonged use may cause loss of integrity and expose electrified components. If this occurs, turn OFF power to the unit and replace.
- For detailed cleaning guidelines please refer to: Controls Care and Maintenance instructions at the end of this document.

Warranty

Five year warranty standard

Supplied Parts

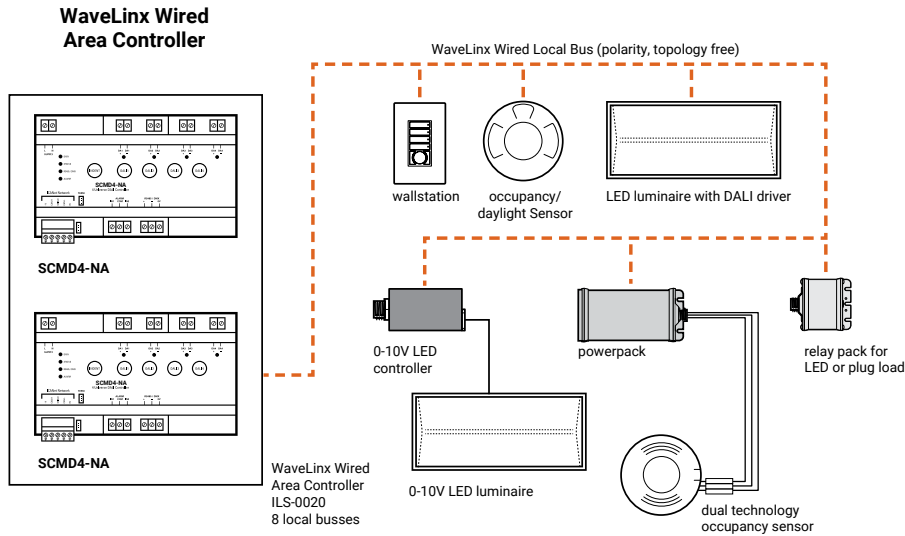


Overview

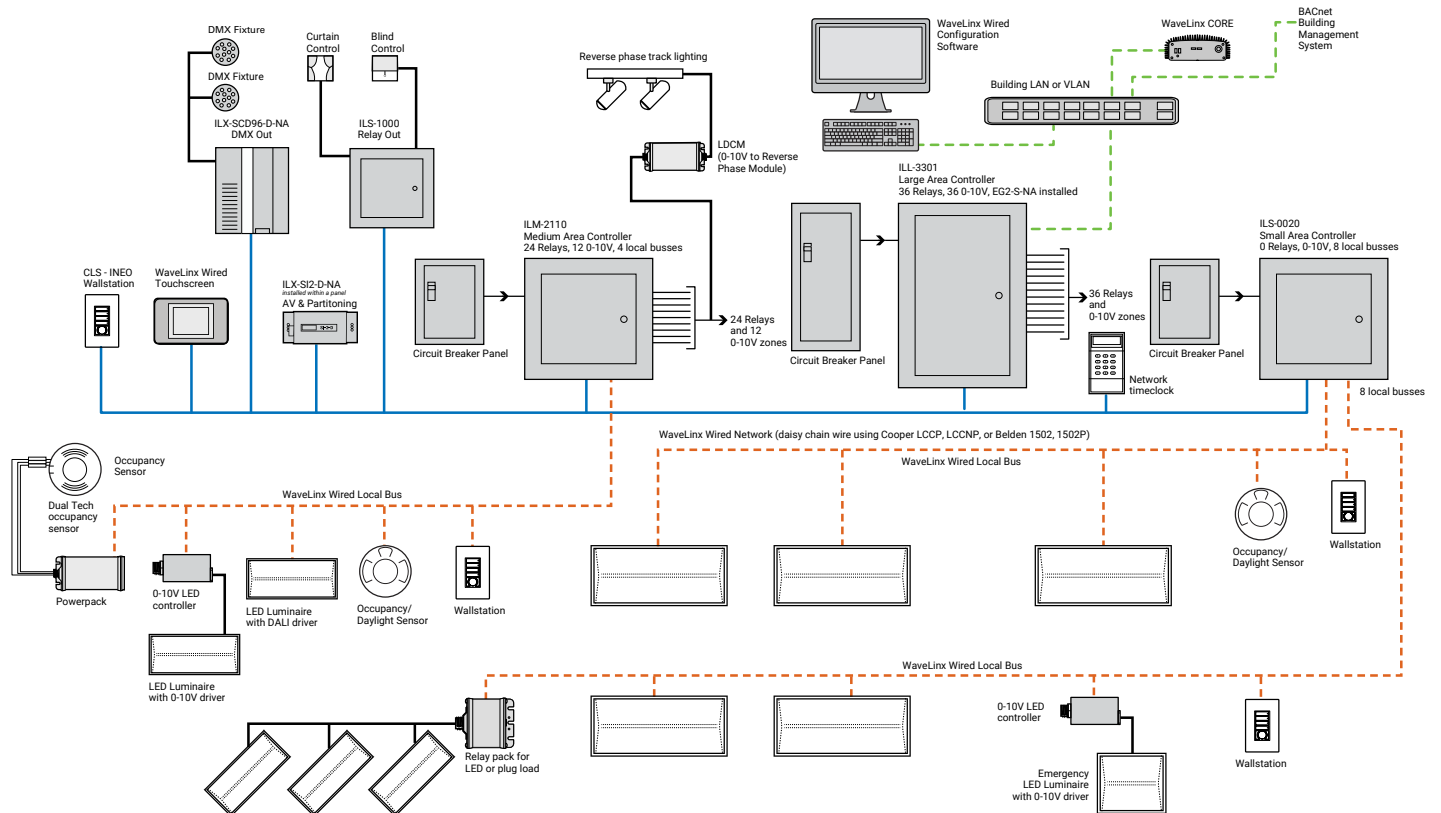
Cooper Lighting Solutions' two wire Digital Wallstation offers the specification grade range of wallstations, which combines the easiest user interface in the industry with a large circular On/Off button, a universal module with up to 10 button configurations, large or small button options and engraving. Designed to fit with standard decorator wallplates, Digital Wallstation can be ganged together to meet specific project needs. Individual buttons have backlight indicator lights and strong tactile feedback.

System architecture

Simple WaveLinX wired system



Complete WaveLinX wired system



Sample System Topology:

This diagram shows the main components of the WaveLinx wired and PRO wireless connected lighting system.

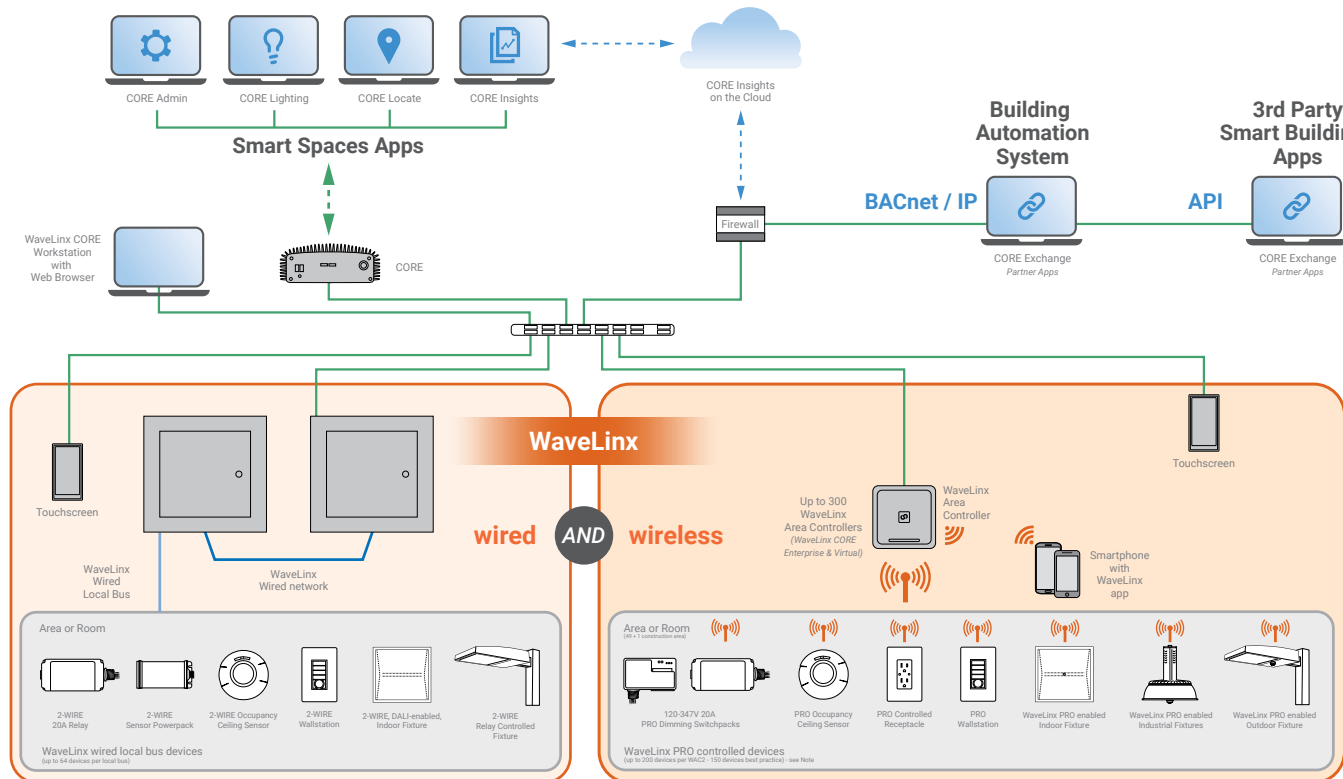
The **WaveLinx PRO wireless system** communicates using wireless mesh technology based on the IEEE 802.15.4 standard. A PoE LAN connection for each WaveLinx Area Controller (WAC) is required for power and data access to the building lighting network.

The **WaveLinx wired system** controls the devices using relay, 0-10V, DMX and the WaveLinx wired digital local bus. The WaveLinx wired system connects to the building LAN using the EG2 module. Each WaveLinx wired area controller communicates on the WaveLinx wired network.

WaveLinx Area Controllers (WAC) and WaveLinx Ethernet Gateways (EG2) communicate with WaveLinx CORE over the Ethernet network.

Please refer to the WaveLinx PRO Wireless Network and IT Guidance Technical Guide and WaveLinx Wired Network and IT Guidance Technical Guide for more information.

[View
WaveLinx Network
and IT Guidance
Technical Guide](#)



Note:
Performance based on second generation
WaveLinx Area Controller (WAC2)

Control Systems

- WaveLinx
- WaveLinx wired
- VividTune



Cooper Lighting Solutions has developed recommended guidelines for cleaning our products that will not impact the operation or finish of the product.

Recommended cleaning tips:

- **Never spray any fluids directly into the device.**
- **Use of ammonia-based or VOC cleaners on this device must be avoided.** Prolonged use may cause loss of integrity and expose electrified components. If this occurs, turn OFF power to the unit and replace.
- **Use a damp rag or single-use wipe** to avoid excess liquid penetrating the device.
- Be sure to wipe up remaining excess liquid after cleaning.
- Ensure the cleaning agent used does not have harsh chemicals such as bleach, ammonia, highly alkaline or concentrated acids (such as hydrochloric acid that can be found in household cleaners such as toilet bowl cleaners, bathroom tile and porcelain cleaners) as they could damage the device, causing them to become brittle and discolored.
- Cooper Lighting Solutions recommends the use of a mild liquid detergent and water to clean the devices. Single use wipes (e.g. Lysol brand or equivalent) are acceptable to use for cleaning the devices, however the single-use wipes **cannot contain bleach, ammonia, highly alkaline or concentrated acids.**

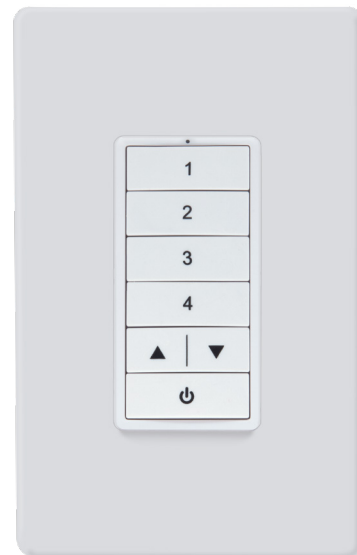


image for
reference only



WARNING

This product is not intended for use in applications involving the use of ammonia-based or VOC cleaners.

Prolonged use may cause loss of integrity and expose electrified components.

If this occurs, turn OFF power to the unit and replace.

Recommended cleaning instructions:

- **Never spray any fluids directly into the device.**
- Apply the mild liquid detergent to a damp cloth or paper towel. Single use wipes (e.g. Lysol brand or equivalent) are acceptable to use for cleaning the devices, however single-use wipes cannot contain bleach, ammonia, highly alkaline or concentrated acids.
- If excess liquid is present, remove by wringing out the cloth or paper towel to avoid liquid penetration into the device.
- Clean the Cooper Lighting Solutions device by wiping over the surface with the damp cloth.
- Remove an excess liquid remaining on the device with a dry cloth or paper towel.