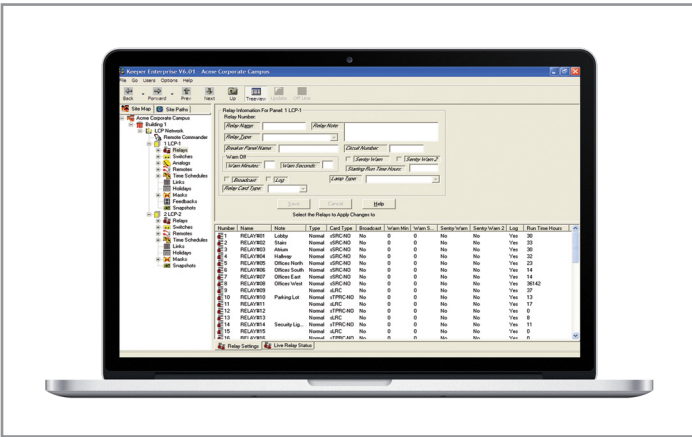


Project		Catalog #		Type	
Prepared by		Notes		Date	



# Greengate

## Keeper Enterprise

---

Accessory programming software for Greengate network and stand-alone panels

**Typical Applications**

Office • Education • Healthcare • Hospitality • Retail • Industrial

**Interactive Menu**

- Order Information [page 2](#)
- Additional Resources [page 3](#)
- Wiring Diagrams [page 3](#)
- Connected Systems [page 6](#)
- Product Warranty

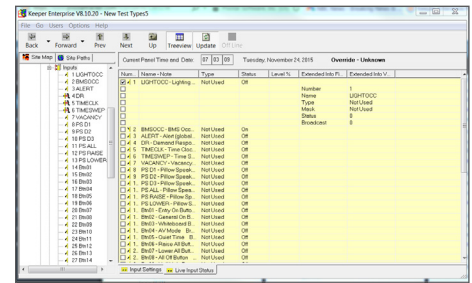
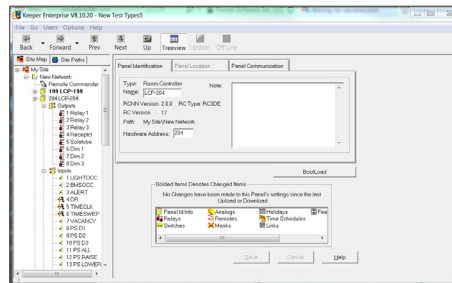
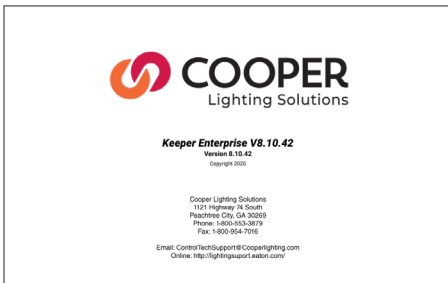
**Product Certification**

Supported Operating System:

- Windows 10 and below - 32 & 64 bit
- USB flash drive
- Network card

## Top Product Features

- Keeper Enterprise is an accessory programming software for Greengate network and stand-alone panels. The PC software allows the user to easily organize the lighting system into multiple sites, networks and buildings. Keeper Enterprise is an off-line editor allowing programming edits and maintenance to be performed when not connected to the network.
- Off-line editor allows programming of your lighting control system when not connected to the system
- Real-time control and status of all lighting control points
- Organize your lighting control system into multiple sites, buildings or networks
- Permits remote access to the lighting control network via the Ethernet Interface Module (EIM) accessory
- Each Network permits the ability to have a dedicated IP address for communications
- Back up and restore functionality



## Order Information

### Catalog Number

Catalog Number	Description
KEEPER NW KIT	Keeper Enterprise

### Additional Accessories

### Catalog Number

Catalog Number	Description
EIM	Ethernet Interface Module (Ordered separately - preferred method for local and remote connection to the lighting control system)

## Product Specifications

### Key Features

- The Keeper Enterprise software accessory provides access to network and stand-alone lighting control panels
- The software permits the user to upload and download programs files, control relays, check relay status, check relay run-time, view logs and more with an easy user interface
- Panel program files can be created, altered and archived on the computer
- The tree structure allows you to organize your panels into sites, networks and buildings
- Right click on a panel, building or network to communicate to your lighting control panels
- The Keeper Enterprise can communicate via serial, modem and TCP/IP communications

### Software Specifications

#### Supported Operating System:

- Windows 10 and below - 32 & 64 bit
- USB flash drive
- Network card

### Software Capabilities by Panel Type

#### ControlKeeper 2 & 4:

- Name descriptor
- Panel address and communication method
- Define, broadcast and log low voltage and digital input information
- Define, broadcast and log Output information
- Link inputs and outputs for functional programming
- Configure Remote network listener commands (to take action based on inputs from other panels on the network)
- Copy/paste already programmed panels for template driven programming

#### ControlKeeper 4A:

- Name descriptor
- Panel address and communication method
- Define, broadcast and log low voltage and digital input information
- Define analog inputs
- Define analog outputs
- Define, broadcast and log Output information
- Link inputs and outputs for functional programming
- Configure Remote network listener commands (to take action based on inputs from other panels on the network)
- Copy/paste already programmed panels for template driven programming

#### ControlKeeper T:

- Name descriptor
- Panel address and communication method
- Define, broadcast and log low voltage and digital input information
- Define analog inputs
- Define, broadcast and log Output information
- Link inputs and outputs for functional programming
- Configure Remote network listener commands (to take action based on inputs from other panels on the network)
- Copy/paste already programmed panels for template driven programming

#### Room Controller Network:

- Name descriptor
- Panel address and communication method
- Panel firmware updates over the network
- Define, broadcast and log Output information
- Define daylight gain settings for three dimming zones
- Adjust High End/Low End trim settings for each panel
- Adjust Demand Response values for each panel
- onfigure Remote network listener commands (to take action based on inputs from other panels on the network)
- Configure scene values for each panel
- Copy/paste already programmed panels for template driven programming

## Control Systems

- Greengate