

Project		Catalog #		Type	
Prepared by		Notes		Date	



Fail-Safe

HVSL4

Vandal Resistant / High Abuse
4" Wide Steel Housing, Surface Mount
Opal Polycarbonate Lens

Typical Applications

Stairwells • Schools • Hospitals • Corridors • Dormitories • Public Restrooms
• Common Areas • Transit Stations • Public Spaces • Locker Rooms •
Maintenance Facilities • Mezzanines • Canopies

Interactive Menu

- Order Information [page 2](#)
- Product Specifications [page 3](#)
- Nominal Input Watts/Delivered Lumens [page 5](#)
- Product Warranty

Top Product Features

- Steel, aluminum, or stainless steel housing and end plates
- High impact opal polycarbonate lens. Lifetime lens warranty.
- 4" nominal width
- 1', 2', 3', 4', and 8' lengths
- Continuous row utilizing end KOs
- Pendant mount available
- Integral or external occupancy sensor, mounted to end mount box
- Options to meet Build America, Buy America and Buy American domestic preference requirements
- 10-Day Quick Spec available. Ships within 10 days of receipt of PO

Product Certification



Product Features

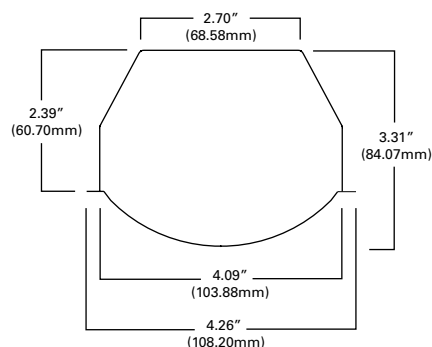


IALDLIRC



16 Architectural Colors
See pages 2 and 3 for details

Dimensional and Mounting Details



[additional product diagrams](#)

Order Information

SAMPLE NUMBER: **HVSL4-2-LD4-1HI-40-UNV-O-EDC1**

SAMPLE NUMBER: **HVSL4-4-LD4-2STD-40-UNV-O-EDD1**

10-DAY QUICK SPEC SAMPLE NUMBER: **QS-HVSL4-4-LD4-2STD-35-UNV-O-EDC1**

Gray bar denotes available with 10-Day Quick Spec

Domestic Preferences ⁽¹⁾	Product Family	Length	LED Type	Number of LED Modules	Illumination Level	Color Temperature	Voltage	Lens Type
[Blank] =Standard BAA =Buy American Act BABA =Build America Buy America Act	HVSL4 =4" Wide HVSL Linear Steel QS-HVSL4 =4" Wide HVSL Linear Steel, Quick Spec ⁽²⁾	1=1' Length ^{(4),(5)} 2=2' Length ⁽⁴⁾ 3=3' Length 4=4' Length 8=8' Length ⁽³⁾	LD4 =LED, Version 4.0	1=(1) LED Module in Cross Section 2=(2) LED Modules in Cross Section	LO =Low STD =Standard HI =High	30=3000K Kelvin 35=3500K Kelvin 40=4000K Kelvin 50=5000K Kelvin	UNV =120V-277V	O =Opal Polycarbonate
Notes (1) Only product configurations with these prefixes are built to be compliant with the Buy American Act of 1933 (BAA) or the Build America Buy America Act (BABA). BABA is the minimum Government compliance requirement for the Build America Buy America standards which is part of the Infrastructure and Investment Jobs Act (IIJA). Individual Government Agencies may have more stringent compliance standards. Please refer to DOMESTIC PREFERENCES website or consult the CLS Domestic Preferences team for more information. Components shipped separately may be separately analyzed under domestic preference requirements.	Notes (2) 10 day ship date, from date of receipt of clean PO to ship date. 25 unit maximum per PO. QS is only available in the shaded options. The EL14W with QS is available only in 4ft length, 1STD or 1HI.	Notes (3) 8 ft. unit consists of two 4 ft. housings joined together at the factory with single 8 ft. lens. (4) No center KO. (5) 1ft. fixture, single circuit only.						

Driver	Options	Finish
EDC1 =Single Circuit, Non-Dimming ⁽⁶⁾ EDC2 =Dual Circuit, Non-Dimming ⁽⁶⁾ EDD1 =Single Circuit, 0-10V 10% Dimming ⁽⁶⁾ EDD2 =Dual Circuit, 0-10V 10% Dimming ⁽⁶⁾ ED1D1 =Single Circuit, 0-10V 1% Dimming ⁽⁶⁾ ED1D2 =Dual Circuit, 0-10V 10% Dimming ⁽⁶⁾	OSE1 =Occupancy Sensor Mounted in End External Box, Connected to One LED Module (box attached to end plate) (FS305) ^{(8),(10),(13)} OSE2 =Occupancy Sensor Mounted in End External Box, Connected to Two LED Modules (box attached to end plate) (FS305) ^{(8),(10),(13)} OSE1S =Occupancy Sensor Mounted in Side External Box, Connected to One LED Module (FS305) ^{(8),(10),(13)} OSE2S =Occupancy Sensor Mounted in Side External Box, Connected to Two LED Modules (FS305) ^{(8),(10),(13)} EL7W =7W Emergency Pack ⁽⁷⁾ EL10W =10W Emergency Pack ⁽⁹⁾ EL14W =14W Emergency Pack ⁽⁹⁾ SF1 =TORX® T20 Tamper Proof side screws SF3 =Allen-head center pin reject Tamper Proof side screws SHP =Stainless Steel Painted Housing SHPA =Stainless Steel Painted, all Fabricated Components ALH =Aluminum Painted Housing ALHA =Aluminum Painted, all Fabricated Components GSKLNS =Gasket to Lens - Side and Ends ⁽¹²⁾ WL =Wet Location Under Covered Ceiling PMSC =Pendant Mount, Stem/Canopy using standard knockouts in back of housing, (4' & 8' length only) - damp location rated only, (no wet location) ^{(7),(9),(11)} PMY =Pendant Mount, AYC Chain or Y-Toggle, uses (4) 0.187" x 0.937" holes, (2) each end, (4' & 8' length only) - damp location rated only, (no wet location) ^{(7),(9),(11)} AM =Anti-microbial matte white paint FSS =Flush side screws (secure lens, non-tamper resistant stainless-steel screws) FSSTP =Flush side screws (secure lens, tamper resistant stainless-steel screws) 90 =90CRI	Standard Colors [Blank] =Matte White AM =Antimicrobial Matte White GW =Gloss White DP =Dark Platinum, Satin Finish BK =Black, Satin Finish BZ =Bronze Architectural Colors TCB =Terra Cotta Brick MRR =Merlot Red PMK =Pumpkin GLD =Goldenrod SGG =Sage Green EVG =Evergreen CBL =Coastal Blue NTB =Night Blue UMB =Ultramarine Blue PPV =Purple Violet NTN =Neutral Tan DBG =Dark Beige CRM =Cream SLG =Silver Grey OLG =Olive Green MHB =Mahogany Brown RALxxxx =RAL Number Color ⁽¹⁴⁾
Notes (6) Purple and gray low voltage driver leads connected to driver for EDD1, EDD2. Not connected for EDC1, EDC2.	Notes (7) EL7W option is not available in the 1' or 2' lengths. EL7W is available in 3' & 4' lengths with 1L0, 1STD, 1HI, & 2L0, but not available in 2STD or 2HI. 2STD w/EL or 2HI w/EL are only available in 8' length. EL7W is available with PMSC or PMY options. (8) Specify voltage either 120 or 277. (9) EL10W & EL14W are only available in the 4' & 8' lengths. The 4' length w/EL is available with 1L0, 1STD, 1HI, & 2L0, but not available in 2STD or 2HI. 2STD w/EL or 2HI w/EL is only available in the 8' length. EL10W & EL14W are not available with PMSC or PMY. (10) Not available 1' length, or other lengths with either EM or dual circuit. (11) Does not include stem, chain, or y-toggle. (12) GSKLNS option is standard with WL option so it is not needed in catalog logic. (13) External occupancy sensor (OSE) is damp location listed only.	Notes (14) Replace XXXX with unique 4 digit RAL number. Please contact Fail-Safe Tech for a list of additional finish swatches.

Accessories (Order Separately) ⁽¹⁵⁾

VRSD=T20 Center Pin Tamperproof TORX®-head bit

SCF-XX-B=Fixed Stem Set

XX=Length (6, 8, 12, 24, 36, 48, 60, 72)

Used with all surface fixtures as stem sets. One set consists of one stem assembly. Minimum of two sets required per fixture. Not rated WL under covered ceiling.

HVSL4-X-CM/BKT=HVSL4 Corner Mount bracket, specify length (X=length=1, 2, 3, 4, 8)

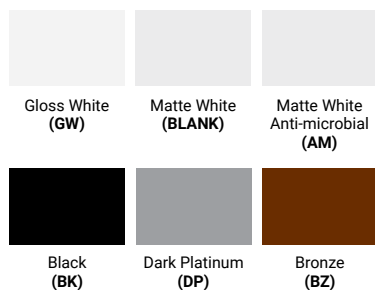
HVSL4-CRNR/CONN=Corner Connector, 90 degree.

HVSL4-X-WMAB45=Wall Mount angle bracket, 45 degree, specify length (X=length=1, 2, 3, 4, 8)

Notes

(15) Accessories sold separately will be separately analyzed under domestic preference requirements. Consult factory for further information.

Fail-Safe Standard Colors



Fail-Safe Architectural Colors



Product Specifications

Housing

- Heavy duty, 18 ga. steel housing and end caps provide rigid construction
- Stainless-steel and die-formed aluminum available
- End caps provided with 7/8" KO for continuous row mounting
- Pendant mount standard with (2) 7/8" KOs in the housing back (all lengths except 1' and 2'). Stem sets ordered separately as accessory item
- Finished in matte white paint standard. Optional architectural colors available
- Electrostatically applied, matte white powder coat finish; gloss white, silver, black, bronze, dark platinum available; Custom colors available (supply RAL number, paint chips, or paint manufacturer catalog number). 16 architectural colors available.

Fasteners

- White painted Hex-head screws (4) secure the lens to the housing
- Stainless steel TORX®T20 (SF1) with center reject pin and allen head with center pin reject screws (SF3) optional
- Optional flush side screws (FSS or FSSTP) painted matte white

Lens

- One-piece extruded UV stabilized, diffuse polycarbonate
- Unique linear ribbed design provides even light distribution while obscuring lamp image and direct glare
- Internal ribs and smooth exterior reduce dirt build-up and facilitates cleaning
- Nominal lens thickness = 0.085"

Reflector

- 18 ga. CRS with white high reflectance polyester powder coat finish
- Reflector serves as driver and wireway cover

Mounting

- Surface mount standard, wall or ceiling.
- Continuous row using end knock-outs

Light-Emitting Diode (LED)

- LEDs available in 3000K, 3500K, 4000K and 5000K with minimum 80 CRI.
- L70 > 72,000 hours

Transformer/Driver

- Electronic driver. 0-10V dimming standard

Compliance

- cULus listed for damp locations standard
- Wet location under covered ceiling optional, wall or ceiling mount

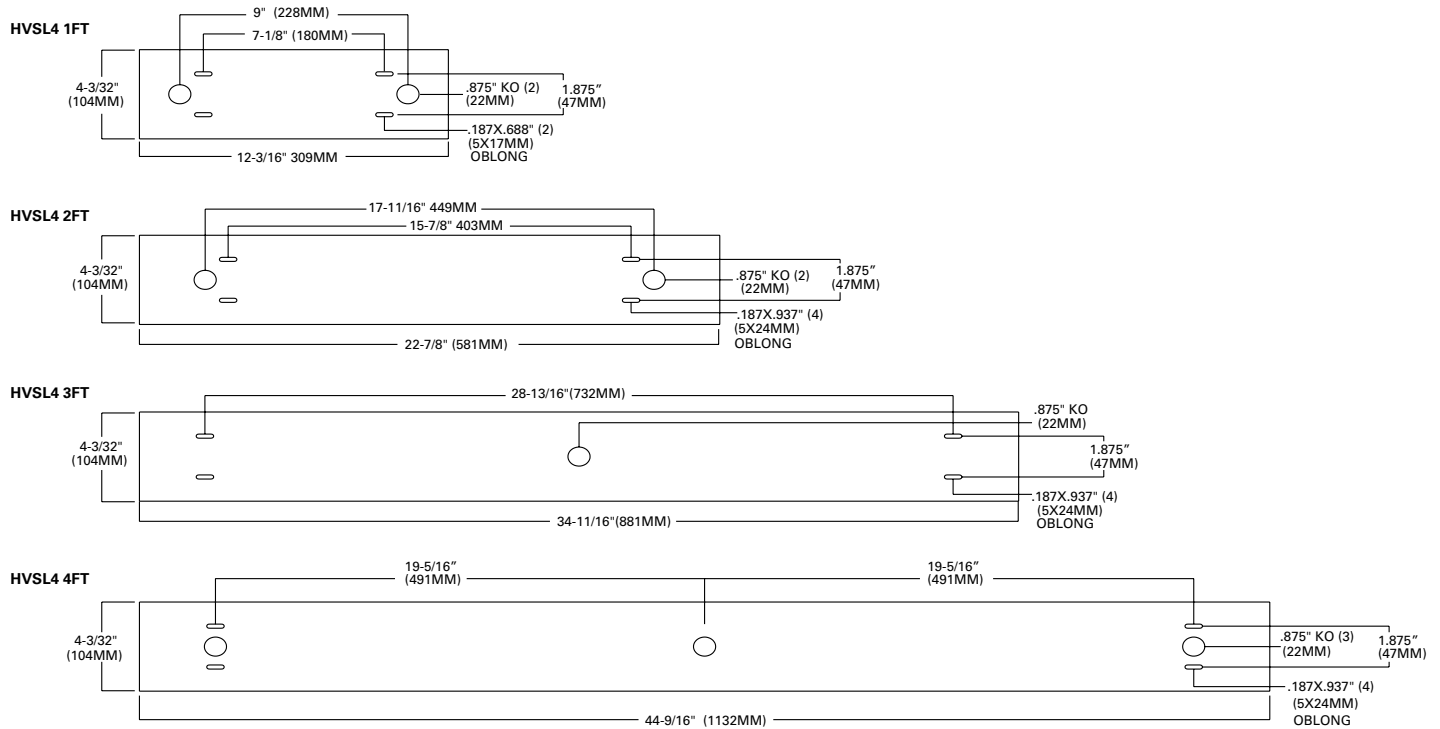
BABA Domestic Preference Compliance

- This Cooper product is manufactured in the US and meets the BABA cost of components rule. To verify a configured product with specific accessories and options meets BABA Domestic Preference Requirements; submit this catalog number to Cooper Lighting Quotation team for validation by our Engineering and Manufacturing teams. Our BABA designation is based on the minimum compliance requirement for BABA. Individual Government Agencies may have more stringent compliance standards. Please refer to the [DOMESTIC PREFERENCES](#) website or consult the CLS Domestic Preferences team for more information. Components shipped separately may be separately analyzed under domestic preference requirements.

Warranty

- Five-year warranty on LEDs and electrical
- Fail-Safe will repair or replace any vandal resistant / high abuse luminaire, that is deemed non-functional due to physical damage to the luminaire exterior housing or polycarbonate lens. The luminaire must be installed correctly, and the warranty does not include any interior component, nor does it include damage due to gunfire, paint, caustic material / chemicals, disastrous or abnormal events.

Dimensional and Mounting Details



Note: * 8' Fixture incorporates (2) 4' fixtures, attached at the factory, and one single 8' length lens

Nominal Input Watts/Delivered Lumens - 4000K

[View IES files](#)

Fixture	Length	# Modules In Cross Section	Illumination Level	Nominal Input Watts	Opal Lens	
					Nominal Delivered Lumens	LPW
HVSL4 (4000K)	2	1	LO	11.6	1304	112.4
		1	STD	16.4	1675	102.1
		1	HI	21.6	2151	99.6
		2	LO	23.1	2602	112.6
		2	STD	32.7	3351	102.5
		2	HI	43.1	4312	100.1
	3	1	LO	34.7	3902	112.5
		1	STD	49.1	5027	102.4
		1	HI	64.7	6469	100.0
		2	LO	49.1	3902	79.5
		2	STD	64.7	5027	77.7
		2	HI	34.7	6469	186.4
	4	1	LO	23.1	2605	112.7
		1	STD	32.7	3351	102.5
		1	HI	43.1	4312	100.1
		2	LO	46.2	5202	112.6
		2	STD	65.4	6701	102.5
		2	HI	86.2	8623	100.0
	8	1	LO	93.3	10403	111.5
		1	STD	132.3	13401	101.3
		1	HI	174.4	17246	98.9
		2	LO	93.3	10403	111.5
		2	STD	132.3	13401	101.3
		2	HI	174.4	17246	98.9

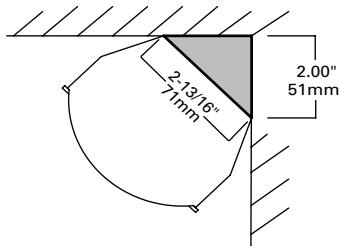
* Nominal input wattage values include LED voltage, drive currents and typical driver efficiency. Refer to LM79 data/photometric files for exact delivered lumen values and input wattage. Values in table are nominal values only.
 * For 8' fixture delivered lumens, multiply 4' unit by a factor of 2.

Lumen Calculator

Approximate CCT Multiplier	
3000K	0.98
3500K	1.00
4000K	1.00
5000K	1.01

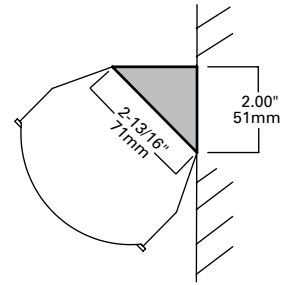
Corner Mount Bracket (Accessory)

HVSL4-X-CM/BKT=HVSL4 Corner Mount Bracket, specify length, (X=1, 2, 3, 4, 8)



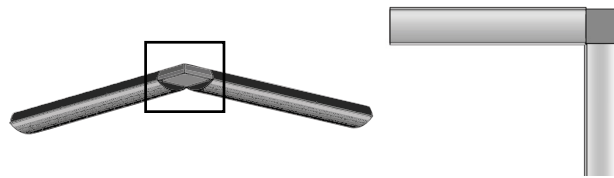
Wall Mount Angle Bracket (Accessory)

HVSL4-X-WMAB45=HVSL4 Wall Mount Angle Bracket, 45 degree, specify length, (X=1, 2, 3, 4, 8)



HVSL4 - Corner Connector (Accessory)

HVSL4-CRNR/CONN=HVSL4 Corner Connector, 90 degree



Pendant Mount: Suspension Sets - Stem Sets (Option)

XX=Length (6, 8, 12, 24, 36, 48, 60, 72) SCF-XX-B=Fixed Stem Set

Used with all surface fixtures as stem sets. One set consists of one stem assembly. Minimum of two sets required per fixture. Not rated WL under covered ceiling.

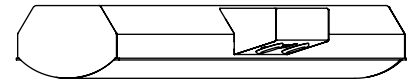
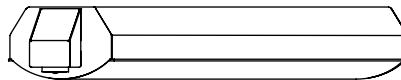
NOTE: Coupler, 3/8" IPS Pipe Coupler to join lengths. Coupler is standard baked white enamel or special order of black. Must specify pendant mount (PMSC or PMY) option on luminaire.

External Occupancy Sensor (Option)

OSE=Occupancy Sensor mounted in external box, (box attached to fixture end plate).

OSES=Occupancy Sensor mounted in external box on side of fixture (box attached to side of fixture).

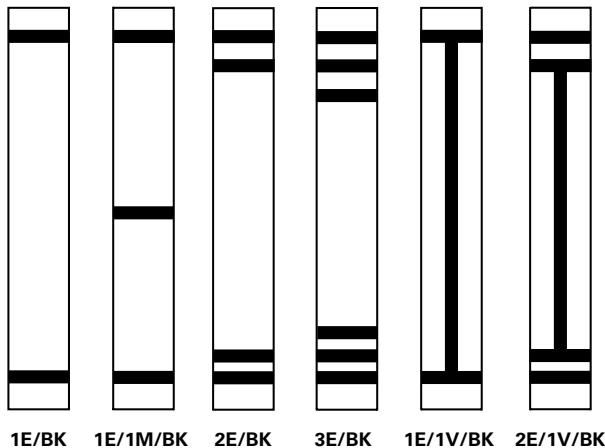
* Internal occupancy sensor available behind lens, positioned at fixture end. Internal sensor adds 4" to the fixture length. (OS1,OS2).



Decorative Lens/Bands (Option)

Ordering Logic (Add to end of fixture catalog #)

Example: HVSL4-4-LD4-1STD-40-UNV-0-EDC1-1E/BK



No of Horizontal band and Location	Vertical Band	Band Color
1E=1 Band on End	1V=1 Band Vertical	BK=Black
2E=2 Bands on End		BR=Bronze
3E=3 Bands on End		BL=Blue
1M=1 Band in Middle		
2M=2 Bands in Middle		
3M=3 Bands in Middle		

Notes:
 *Bands are 3/4" thick
 *Bands are high durability paint finish
 *For custom colors, please furnish RAL# or paint manufacturer/catalog number
 *For other variations or colors not shown, please issue PDR