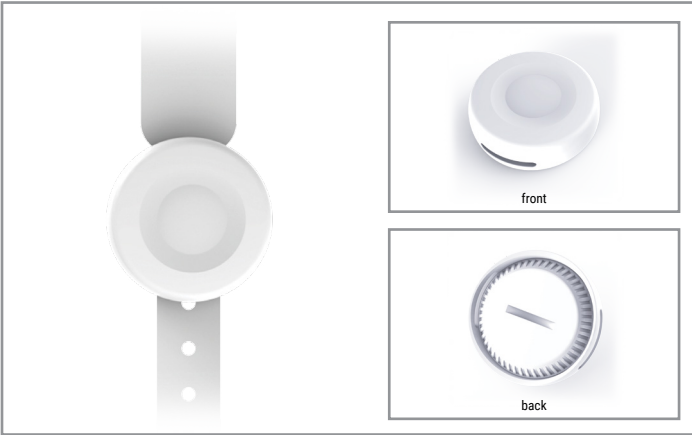


Project		Catalog #		Type	
Prepared by		Notes		Date	




WaveLinx

CORE Locate Bracelet Tag with Pushbutton TRX-TAG-BRC7

CORE Locate Bracelet Tag

Typical Applications
Healthcare • Hospitality

 **Interactive Menu**

- Order Information page 2
- Connected Systems page 3
- Product Warranty



 • Bluetooth QDID/EPL
Regulation (ID-2A-BU6-B7)
EN300328 / 301489 / 60950 / 62479

Product Features




Web Based
CORE Locate
Asset Tracking Bracelet

- Bluetooth 5.0
- Small form Factor
- Accelerometer sensor
- Unique MAC address

Compatibility




Overview

CORE Locate delivers real-time indoor location service and management, by leveraging the WaveLinx CORE smart space platform. Designed to allow you to monitor activities by sensing the location of your assets, staff and patients and use the data to improve business/production workflows, improve safety and security.

Product Features & Benefits

- Wristband tag with push button ideal for hospital patients, personnel positioning and emergency call
- Configurable parameters using Tag config mobile app
- Low power consumption
- Detachable wrist band
- IP66 waterproof grade, dust-proof, shock proof
- 1 piece CR2032 replaceable coin battery

Order Information

Catalog Number

Catalog Number	Description
TRX-TAG-BRC7	WaveLinx CORE Locate Tag- Bracelet 1 year- B7

Required Accessories

All WaveLinx CORE system accessories require WaveLinx CORE on-premise hardware platform hosting WaveLinx CORE Smart Spaces applications (TRX-TCENT2 or TRX-TCVRT2).

Ensure the bill of material includes one WaveLinx CORE and one software license from the components below.

Catalog Number

Catalog Number	Description
TRX-TCENT2	WaveLinx CORE Enterprise is an on-premise hardware platform hosting CORE software applications (supports up to 300 WaveLinx Wireless Area Controllers)
TRX-TCVRT2	WaveLinx Virtual CORE Enterprise is a virtual platform hosting CORE software applications (supports up to 300 WaveLinx Wireless Area Controllers)
TRX-LOCSNR-1YR	WaveLinx CORE Locate annual subscription
TRX-LOCBAS	WaveLinx CORE Locate application

Product Specifications

Mechanical

Size: Ø 35.9" (11mm)

Weight: 0.42 oz (12g with battery)

Environment:

- **Operating temperature:** -4°F to 140°F (-20°C to 60°C)
- **Storage temperature:** -4°F to 140°F (-20°C to 60°C)
- For indoor use and spaces

Mounting: Compatible with most healthcare wrist bands

Color: White

Housing: ABS plastic housing

Electrical

Product Activation:

- Press the button on the tag for 5s, the LED lights will turn on for 3s then turn off, the device is activated
- Press the button on the tag for 5s, the LED flashes 5 times then turns off, the device is turned off

Power Supply Type: CR2032 Battery

Battery Life:

Beacon Rate	Expected Life
1 second	12 months
3 seconds	18 months
4 seconds	24 months
30 seconds	30 months

Hardware Specifications

Status Indicators:

- Status LED on front of unit

Software Specifications

- CORE Locate Tag Configuration App
- CORE Locate

Compatibility

- CORE Locate

Wireless Specifications

Radio: Bluetooth Low Energy

Standard: BLE 5.0

Transmitter Power: -40dBm to 4dBm

Range: 164ft - 295ft (50-90m)

Programmable Beacon Rate: 1-30 seconds

Standards/Ratings

- iBeacon MFi License (iBC-14-00582)
- Bluetooth® EPL Certification
- FCC Regulation (ID:2ABU6-B7)
- CE Regulations (included EN300328/301489/60950/62479)

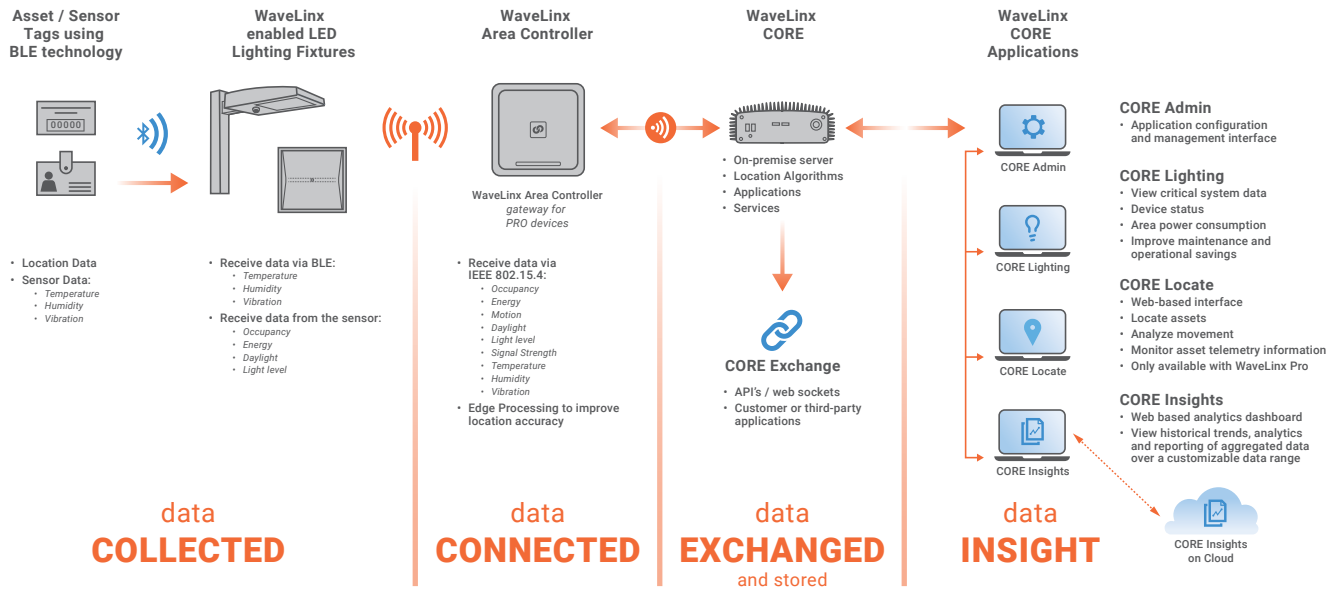
Warranty

One year warranty

Better Data. Better Decisions.

WaveLinx CORE combined with our WaveLinx PRO wireless connected lighting system is a distributed network of LED lighting fixtures with integrated sensing and beacon technology that captures real-time data; making your facility smarter so you can make smarter decisions.

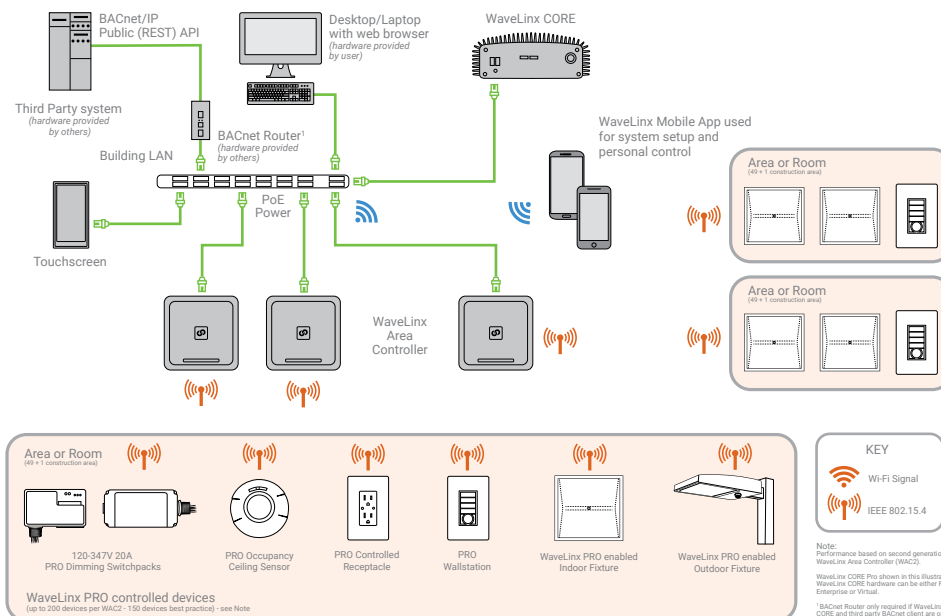
WaveLinx CORE provides an open IoT platform and infrastructure that connects intelligent sensors leveraging the real-estate of the physical light fixture to solve higher complexity problems in a commercial building to deliver actionable insights through the aggregation of valuable data.



Sample System Topology

This diagram shows the main components of the WaveLinx PRO wireless connected lighting system. The PRO devices communicate using wireless mesh technology based on the IEEE 802.15.4 standard. A PoE LAN connection for each WaveLinx Area Controller (WAC) is required for power and data access to the building lighting network. The WaveLinx CORE Enterprise and WaveLinx Area Controllers (WAC) communicate with WaveLinx CORE Apps over the Ethernet network. Please refer to the WaveLinx PRO Network and IT Guidance Technical Guide for more information.

[View WaveLinx PRO Network and IT Guidance Technical Guide](#)



Control Systems

- WaveLinx