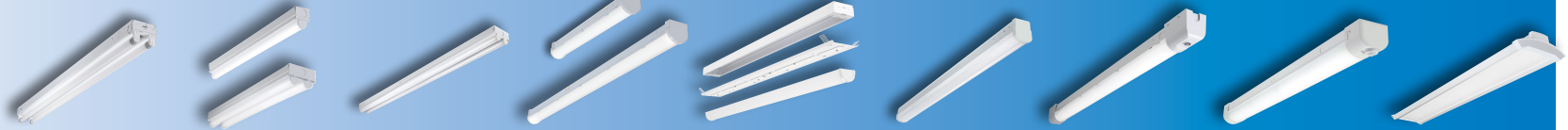


Good

Better

Best

Click on products to learn more



		SLES ²	ST	ST2 DIM	SLSTP	SSRK Retrofit	SNX	SRL	SWLED	WSL
APPLICABILITY ¹	Education	★★	★	★★	★★★	★	★★★	★★★	★★★	★★
	Office	★	★	★★	★★★	★	★★★	★★★	★★★	★★★
	Healthcare				★	★	★★	★★	★	★★
	Retail	★★★	★	★★	★★	★★★	★★★	★★★	★	★★★
	Industrial	★★	★★	★★	★★	★★★	★★★	★★★	★★	★★
	Residential		★★★		★★					
FEATURES / PERFORMANCE	Length	4', 8'	2', 4', 8'	2', 4', 8'	2', 4', 8'	4', 8'	2', 4', 8'	4', 8'	4'	4', 8'
	lm/W (Max)	167 (8ft)	108	122	148	159	176	149	150	121
	Lum (Max)	8,700	9,200	9,200	11,900	8,000 / 4 ft.	22,000	11,000	8,000	16,000
	Life (@60K)	L70/50K ³	L70/50K	L70/50K	L70/50K	L94	L87	L82	L91	L81
	Dimming	N/A	No	0-10V	Triac or 0-10V	0-10V	0-10V, Step, Dali	0-10V, Step, Dali	0-10V, Step, Dali	0-10V, Step, Dali
	Lens	None ⁴	White, Single or Dual Lens	White, Dual Lens	Diffuse, Poly	Frost, Acrylic	Open, Round, FDL, Square, Refl	Frost, Acrylic	(Vandal Resistant) Frost, Acrylic	WaveStream, Acrylic
	Emergency	Integrated	None	Integrated	Integrated	Integrated	Integrated	Integrated	Integrated	Integrated
	CRI	80+	80+	80+	80+	80+	>80 / 90	80+	80+	80+
	Sensor Location	Remote	Remote	Remote	Sensor Kit	N/A	Integrated	Integrated	Integrated	Integrated
	DLC	Standard (TLED Lamps only)	Standard	Standard	Standard	Premium	Premium	Premium	Standard	Standard
	Lumen / CCT Select	No	No	CCT	CCT/Lumen	No	Yes, specific lumen only	No	No	No
INTEGRATED CONTROLS	Basic Occupancy				✓	✓	✓	✓	✓	✓
	Stand Alone Daylight / Occupancy					✓	✓	✓	✓	✓
	WaveLinx Lite						✓	✓	✓	✓
	WaveLinx						✓	✓	✓	✓
	DLVP									✓

Notes: 1. ★★★ = high applicability, ★★ = medium applicability, ★ = low applicability, blank = non-applicable. 2. w/T8 LED lamps included. 3. TLED lamp tested to B50 L70 requirement. LED lifetime means the length of time (in hours) until half of the LED light sources maintain at least 70% of their initial lumen output (B50, L70). 4. TLED CorePro lamp is glass tube. TLED MasterClass lamp is shatter resistant plastic.