

Project		Catalog #		Type	
Prepared by		Notes		Date	



## HALO HOME™

### QuickLink Low Voltage Kit & Accessory Fixtures

#### Smart Canless Downlights (RLQL4-DM)

Low voltage downlighting kit with 1 remote power supply, 40' of low voltage cable, and 4 Smart RLQL4-DM fixtures with QuickLink Twist Connectors. (Plus individual accessory fixtures.)

#### Typical Applications

Residential

#### Interactive Menu

- Order Information page 2
- Photometric Data page 3
- Product Specification page 4
- Product Warranty page 4

#### Product Certification



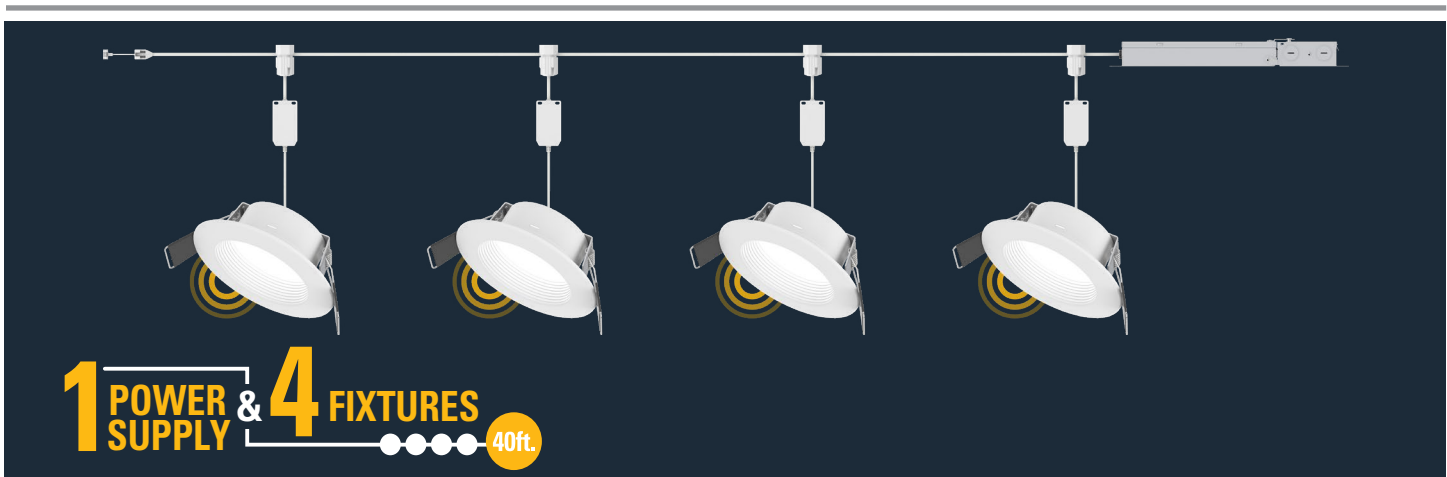
Refer to ENERGY STAR® Certified Products List.  
Can be used to comply with California Title 24 High Efficacy requirements.  
Certified to California Appliance Efficiency Database under JAB.

#### Product Features



#### Top Product Features

- 70W low-voltage remote power supply with 40-feet of low voltage cable to power up to 11 QuickLink fixtures
- Twist Connectors for ultra-fast wiring to low voltage cable and installation
- Use the app for individual wireless Bluetooth programming and control of: white tuning (2700-5000K), dimming to 5%, groups, scenes, and schedules + add the optional Bridge to enable voice commands and remote access
- Delivers 615 lumens per LED fixture; achieves L70 at 50,000 hours in IC and non-IC applications (low-voltage); 90CRI (min); R9 50 & color accuracy within 4SDCM)
- For remodel (or new construction with optional mounting frames)
- Wet location listed for showers and protected outdoor ceilings



## Order Information

Kit Cat. Number: **RLQL4069BLE40ADM-4PK**

A complete kit consists of 4 LED fixtures, 1 Remote Power Supply and 40-ft of cable.

Models	Lumens	CRI/CCT	Protocol	Options	Packaging
<b>Models</b>	<b>Lumens</b>	<b>CRI/CCT</b>	<b>Protocol</b>	<b>Options</b>	<b>Packaging</b>
<b>RLQL4</b> = Smart Bluetooth 4-inch LED canless downlight with QuickLink Twist Connector for QuickLink Low Voltage system (regressed matte white baffle)	<b>06</b> = 600 lumens (nominal) (Kit Lumens = 2460)	<b>9</b> = 90 CRI minimum, white tuning, select CCT 2700K - 5000K via mobile app	<b>BLE40A</b> = Bluetooth Mesh wireless control, 4.0	<b>DM</b> = Direct Mount	<b>-4PK</b> = 4-pack of fixtures + single 70W Remote Driver/Junction Box + 40-ft of Low Voltage Cable
<b>Notes</b>	<b>Notes</b>	<b>Notes</b>	<b>Notes</b>	<b>Notes</b>	<b>Notes</b>

Individual Accessory Fixture Cat. Number: **RLQL4069BLE40ADM**

Only QuickLink Accessory Fixtures can be added to a QuickLink Kit. Other HALO or HALO Home fixtures cannot be used

Models	Lumens	CRI/CCT	Protocol	Options	Packaging
<b>Models</b>	<b>Lumens</b>	<b>CRI/CCT</b>	<b>Protocol</b>	<b>Options</b>	<b>Packaging</b>
<b>RLQL4</b> = Smart Bluetooth 4-inch LED canless downlight with QuickLink Twist Connector for QuickLink Low Voltage system (regressed matte white baffle)	<b>06</b> = 600 lumens (nominal)	<b>9</b> = 90 CRI minimum, white tuning, select CCT 2700K - 5000K via mobile app	<b>BLE40A</b> = Bluetooth Mesh wireless control, 4.0	<b>DM</b> = Direct Mount	<b>Blank</b> = Additional fixture (Mix & Match: compatible with any HALO Home QuickLink Kit)
<b>Notes</b>	<b>Notes</b>	<b>Notes</b>	<b>Notes</b>	<b>Notes</b>	<b>Notes</b>

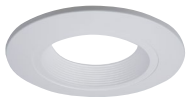
## Accessories

Accessories
<b>Mounting Frame</b> <b>HL4NCMF</b> = 4" new construction mounting frame <b>HL4RSMF</b> = 4" round and square mounting frame <b>Designer Trims</b> <b>RL4TRMWHB</b> = 4" White Paintable Ribbed Baffle Trim Ring <b>RL4TRMSNB</b> = 4" Satin Nickel Ribbed Baffle Trim Ring <b>RL4TRMTBZB</b> = 4" Tuscan Bronze Ribbed Baffle Trim Ring <b>RL4TRMWH</b> = 4" White Paintable Smooth Baffle Trim Ring <b>RL4TRMSN</b> = 4" Satin Nickel Smooth Baffle Trim Ring <b>RL4TRMTBZ</b> = 4" Tuscan Bronze Smooth Baffle Trim Ring

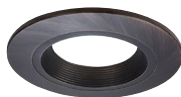
## Fixture Count

Model	Watts per Downlight	Max Downlights
RLDM 4"	6.2 W	11
RLDM 6"	6.2 W	11

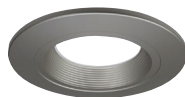
## Designer Trims: Baffle



**RL4TRMWHB**  
White (Paintable)



**RL4TRMTBZB**  
Tuscan Bronze



**RL4TRMSNB**  
Satin Nickel

## Designer Trims: Smooth Splay



**RL4TRMWH**  
White (Paintable)



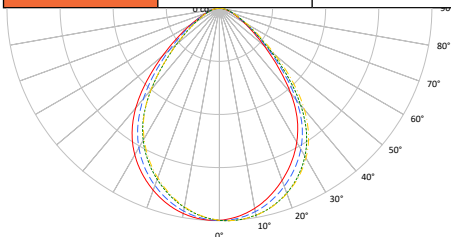
**RL4TRMTBZ**  
Tuscan Bronze



**RL4TRMSN**  
Satin Nickel

## Photometric Data

RLQL4069BLE40ADM - Individual Fixture		
Luminaire lumens		615
Input watts		6.2
LER (LPW)		99.2
Spacing Criteria	0	1.12
	90	1.20
	45	1.20
Beam angle (degrees)		83
Field angle (degrees)		128
Zonal lumen	Lumens	% Lumens
0-30	248	40.4
0-40	388	63.2
0-60	562	91.5
0-90	615	100
90-180	0	0
0-180	615	100



\* Tested in accordance with IES LM63. Field results may vary.

## Energy Data

Energy Data @ 3000K	
Lumens	615
Input Voltage	120V
Input Current	243 (mA)
Input Power	6.2 (W)
Efficiency	99.2 (LPW)
Inrush (A)	2.1 (A)
THD: ≤ 20%	
PF: ≥ 0.9	
T Ambient -30 - +40°C	
Sound Rating ≤ 20dba	

RLQL4069BLE40ADM-4PK - System					
Nominal Lumens	CCT	Watts	lumens	LPW	CRI
Individual Downlight 600LM	2700K	28.6	2420	84.6	92
	3000K	28.6	2460	86.0	93
	3500K	28.6	2520	88.1	93
	4000K	28.6	2580	90.2	93
	5000K	28.7	2640	92.0	92

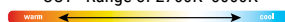
RLLV4069BLE40AWHDM - Individual Fixture					
Nominal Lumens	CCT	Watts	lumens	LPW	CRI
Individual Downlight 600LM	2700K	6.2	605	97.6	92
	3000K	6.2	615	99.2	93
	3500K	6.2	630	101.6	93
	4000K	6.2	645	104.0	93
	5000K	6.2	660	106.5	92

## Color Metric Summary - 3000K

TM-30-15	Rf = 93
	Rg = 102
CRI/CIE	Ra = 93
	R9 = 64



CCT - Range of 2700K- 5000K



## Product Specifications

### QuickLink System

- HALO Home QuickLink Low Voltage Kits are powered by a single 70W Remote Power Supply with an attached 40-feet of low voltage cable
- Fixtures twist connect onto the low voltage cable
- Each fixture can be wirelessly programmed and controlled via the HALO Home app or HALO Home controllers
- HALO Home QuickLink fixtures can be mixed and matched on the same remote power supply (ensure the 70W max wattage is not exceeded)

### Wireless System

- For use with the HALO Home mobile app
- Bluetooth low energy (BLE) mesh allows on/off, white tuning (2700-5000K) and dimming to 5% to be controlled wirelessly with companion wall stations, smart phones and tablets using the HALO Home mobile application
- Setup Groups, Scenes and Schedules to automate lighting with the HALO Home mobile app

### Wireless Pairing

- See HALO Home Quick Start Guide for wireless setup, guidance and troubleshooting: [BringHaloHome.com](http://BringHaloHome.com)

### Bluetooth Mesh

- HALO Home products work better together. Smartphone(s) will need to be within range of HALO Home device to control (~35 ft)
- Device-to-device communication is ~100 ft line-of-sight
- Expand and strengthen the Bluetooth network range by adding HALO Home devices. Learn more at [BringHaloHome.com](http://BringHaloHome.com)

### Gasket

- Closed cell gasket achieves restrictive airflow and wet location listing without additional gaskets or caulking

### Fixture

- Module construction includes LED Array, heat sink, reflector, lens, baffle and trim ring.
- Regressed ribbed baffle
- Heat sink designed to conduct heat away from the LED Array

### LED Array

- Mid power LED array provides a uniform source with high efficiency and no pixilation.
- 90 CRI minimum, R9 greater than 50
- Delivers 615 lumens, achieves L70 at 50,000 hours in IC and non-IC applications
- Color accuracy within 3 SDCM at the CCT endpoints and 4 SDCM in between endpoints, provide color accuracy and uniformity.
- Color Temperature (CCT) is white tunable (2700-5000K) via the HALO Home app

### Optical Assembly

- Regressed lens
- Impact-resistant polycarbonate
- Convex form and lamp-like appearance
- Diffuse for even illumination

### Gaskets

- Closed cell gaskets achieve restrictive airflow requirements without additional caulking

### Remote Power Supply

- Aluminum remote driver / junction box with captive hinged junction box cover
- Listed for (6) #12 AWG 90° C splice conductors, 2-in, 2-out plus (2) ground
- (2) ½" conduit pry-outs
- (2) Slide-N-Side™ non-metallic (NM) wire traps all
- Accepts 14-2, 14-3, 12-2, 12-3 U.S and 14-2, 14-3, 12-2 Canadian NM cable
- (3) 4-port push wire nuts with clear caps for quick and reliable mains voltage connections
- Integral keyhole mounting slots facilitate direct mounting to building structure or new construction mounting frame
- 120V 60 Hz constant current driver provides noise free operation
- Continuous, flicker-free dimming down to 5% with HALO Home Controllers (Accessory & Anyplace Dimmers and Scene Keypad) or with the HALO Home app using a smartphone/tablet
- Inline electrical quick connect provides low voltage connection to fixture fitting

### Low Voltage Cable

- Cable can be inserted into the QuickLink Connector with either edge up or down - the fixture manages polarity
- Cable is considered "self-healing". Previous installation puncture sites do not need to be wrapped in tape
- Cable Termination Cap to be placed on end of low voltage cable after fishing through framing

### Fixture Installation

- Can be installed in 1/2" to 1-1/4" thick ceilings
- Cutout can utilize standard round hole saw sizes, cutout template provided

Hole Saw Sizing	Min	Max
RLDM 4"	4"	4-3/16"

- Heat treated springs hold fixture fitting securely in the ceiling eliminating light leaks
- Can be removed from below the ceiling for service or replacement

### Mounting / Retention

- This fixture requires no housing or third-party junction box
- The remote driver/junction box may be used in direct contact with insulation. Use the keyhole slots to mount to framing if code requires
- Installer must cut the template out of the drywall and install into aperture with the clips compressed (pointing upward)
- When released, the spring clips will rest on the back side of the drywall securing the fixture
- Not for installation in recessed cans

### Optional Mounting Frame

- Pre-galvanized steel mounting frame locates fixture fittings during electrical rough-in and provides cutout guidance for drywall contractor
- Provides attachment of remote power supply

### Compliance

- UL Certified for US and Canada
- Wet and Damp location listed
- Airtight certified per ASTM-E283
- Suitable for use in clothes closets when installed in accordance with the NEC 410.16 spacing requirements
- EMI/RFI emissions per FCC 47CFR Part 15 consumer limits
- Contains no mercury or lead and RoHS compliant
- Photometric testing in accordance with IES LM-79-08
- Lumen maintenance projections in accordance with IES LM-80-08 and TM-21-11
- Can be used for State of California Title 24 high efficacy luminaire compliance. Complies with Title 24 JA8-2019-E.
- Can be used International Energy Conservation Code (IECC) and Washington State Energy Code high efficiency luminaire compliance.
- ENERGY STAR® listed, reference database for current listings

### Warranty

- Five year limited warranty, consult website for details. [www.cooperlighting.com/legal](http://www.cooperlighting.com/legal)

