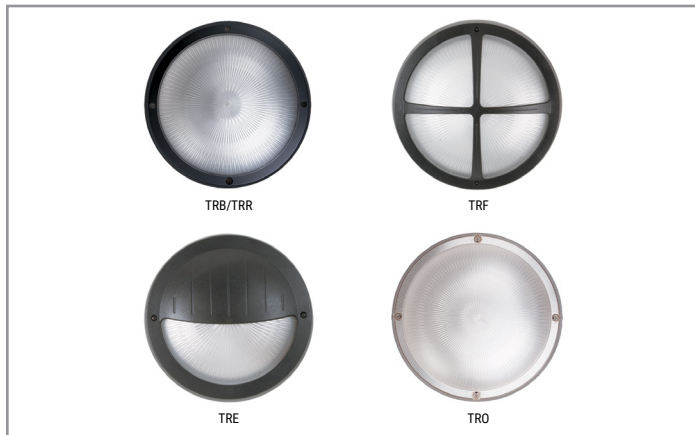


Project		Catalog #		Type	
Prepared by		Notes		Date	



# Fail-Safe

## TR11

11" Round High Abuse Polycarbonate  
 10/15/20/25 Watt  
 Up to 2630 Lumens  
 Ceiling / Wall / Interior / Exterior

### Typical Applications

Cleanroom • Pharmaceuticals • Vivariums • Hosedown • Food Prep • Healthcare • Vandal Resistant

### Interactive Menu

- Order Information page 2
- Max Ambient Operating/Option Matrix page 2
- Design Gallery page 3
- Product Warranty

### Product Certification



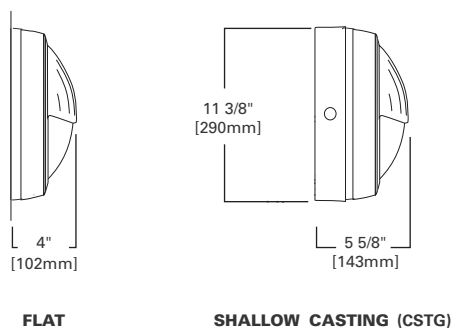
### Product features



### Top Product Features

- Available from 10 to 25 watts
- IP65 Rated
- UL wet location listed
- Opal and clear polycarbonate lens
- Up to 2,630 delivered lumens
- Clear or opal lens, choose from 4 face plates
- Emergency driver option
- Photocontrol and occupancy sensor available
- Shallow casting optional for surface conduit

### Dimensional and Mounting Details



### Delivered Lumens (5000K)

Wattage		TRO11	TRB11	TRR11	TRF11	TRE11
10	Clear	1175	950	825	775	650
	Opal	825	600	600	525	450
15	Clear	1725	1325	1500	1200	930
	Opal	1200	825	850	760	600
20	Clear	2200	1800	1950	1500	1175
	Opal	1500	1100	1150	1000	725
25	Clear	2630	2190	2333	1831	1410
	Opal	1695	1400	1485	1155	890
		Open	Border	Ring	Four Quadrant	Eyelid

**Note:** Delivered Lumens in table above are estimated values only. Refer to LM-79 data files for exact delivered lumen, input wattage and distribution.

Order Information

SAMPLE ORDER NUMBER: TRF11-LD4-15W-40-OPL-BZ-UNV-EDC1-EL5W/CSTG

Domestic Preferences <sup>(1)</sup>	Product Family	Shape	Style	Size	LED	Wattage	Color Temp	Lens
<b>[Blank]</b> =Standard <b>BAA</b> =Buy American Act <b>BABA</b> =Build America Buy America Act	T=Terrapin LED	R=Round	<b>B</b> =BorderPaint <sup>(2)</sup> <b>E</b> =Eyelid <sup>(2)</sup> <b>F</b> =Four Quadrant <sup>(2)</sup> <b>R</b> =Ring <sup>(2)</sup> <b>O</b> =Open <sup>(2)</sup>	11=11 inch	LD4=LED 4.0	<b>10W</b> =10 Watt <b>15W</b> =15 Watt <b>20W</b> =20 Watt <b>25W</b> =25 Watt	<b>30</b> =3000K <b>35</b> =3500K <b>40</b> =4000K <b>50</b> =5000K	<b>OPL</b> =Opal <b>CL</b> =Clear
<b>Notes</b> <small>(1) Only product configurations with these prefixes are built to be compliant with the Buy American Act of 1933 (BAA) or the Build America Buy America Act (BABA). BABA is the minimum Government compliance requirement for the Build America Buy America standards which is part of the Infrastructure and Investment Jobs Act (IIJA). Individual Government Agencies may have more stringent compliance standards. Please refer to <a href="#">DOMESTIC PREFERENCES</a> website or consult the CLS Domestic Preferences team for more information. Components shipped separately may be separately analyzed under domestic preference requirements.</small>		<b>Notes</b> <small>(2) Color must be specified.</small>						

Color <sup>(3), (4)</sup>	Voltage	Driver	Circuits	Options <sup>(5)</sup>	Accessories <sup>(11)</sup>
<b>BK</b> =Black <b>WH</b> =Whiter <b>BZ</b> =Bronze <b>DP</b> =Dark Platinum	<b>UNV</b> =Universal Voltage <b>120V</b> =120 Volt <b>277V</b> =277 Volt	<b>ED</b> =Electronic Driver	<b>C1</b> =Single Circuit, Low Voltage Leads not connected <b>D1</b> =D1=Single Circuit, Low Voltage Dimming Leads connected to driver and presented at supply	<b>F1</b> =Fuse (specify voltage) <sup>(6)</sup> <b>CSTG</b> =Shallow Casting - Same as SCB11, but ships with fixture <sup>(6), (7)</sup> <b>PB120V/CSTG</b> =Photocell, 120V, (Shallow Casting Necessary) <sup>(5), (6), (10)</sup> <b>PB277V/CSTG</b> =Photocell, 277V, (Shallow Casting Necessary) <sup>(5), (6), (10)</sup> <b>OS</b> =Occupancy Sensor, Internal (behind lens), FM105 <sup>(5), (9)</sup> <b>EL5W/CSTG</b> =Emergency Battery Pack, 5W (Shallow Casting Necessary), 20, 25 watt limited to max. 25°C ambient environment <sup>(5), (6), (8)</sup>	<b>VRSD</b> =T20 Center-pin tamper-proof TORX®-head screwdriver
<b>Notes</b> <small>(3) Custom colors available. Furnish RAL # or paint manufacturer/model #. (4) Open lens/style does not require a color to be specified, unless used with a shallow casting (CSTG, PB120/CSTG, PB277/CSTG, EL5W/CSTG).</small>				<b>Notes</b> <small>(5) See Maximum Ambient Operating/Option Matrix below for option capability and wattage/ambient restrictions. (6) When CSTG, PB120/CSTG, PB277/CSTG, EL5W/CSTG is specified, a color must be specified. (7) CSTG has four threadless hubs suitable for 1/2" conduit (plugged). (8) Not available 25W. (9) OS only functional with 120 or 277 input voltage (10) PB120V/CSTG requires 120V to be specified as fixture voltage, and PB277V/CSTG requires 277V to be specified as fixture voltage.</small>	<b>Notes</b> <small>(11) Accessories sold separately will be separately analyzed under domestic preference requirements. Consult factory for further information.</small>

Maximum Ambient Operating / Option Matrix

	10W				15W				20W				25W			
	Flat Mount		Shallow Cast		Flat Mount		Shallow Cast		Flat Mount		Shallow Cast		Flat Mount		Shallow Cast	
	Ceiling	Wall	Ceiling	Wall	Ceiling	Wall	Ceiling	Wall	Ceiling	Wall	Ceiling	Wall	Ceiling	Wall	Ceiling	Wall
No options	45C	45C	45C	45C	40C	40C	40C	40C	40C	40C	40C	40C	40C	40C	40C	40C
Fuse	45C	45C	45C	45C	40C	40C	40C	40C	40C	40C	40C	40C	40C	40C	40C	40C
Photocell	n/a	n/a	40C	40C	n/a	n/a	40C	40C	n/a	n/a	30C	30C	n/a	n/a	25C	25C
Occ Sensor	40C	40C	35C	35C	35C	35C	35C	35C	25C	25C	25C	25C	n/a	n/a	n/a	n/a
Fuse & Photocell	n/a	n/a	40C	40C	n/a	n/a	40C	40C	n/a	n/a	30C	30C	n/a	n/a	25C	25C
Fuse & Occ Sensor	40C	40C	35C	35C	35C	35C	35C	35C	25C	25C	25C	25C	n/a	n/a	n/a	n/a
EM	n/a	n/a	35C	35C	n/a	n/a	35C	35C	n/a	n/a	25C	25C	n/a	n/a	n/a	n/a
EM & Fuse	n/a	n/a	35C	35C	n/a	n/a	35C	35C	n/a	n/a	25C	25C	n/a	n/a	n/a	n/a
EM & Fuse & Photocell	n/a	n/a	35C	35C	n/a	n/a	35C	35C	n/a	n/a	25C	25C	n/a	n/a	n/a	n/a
EM & Fuse & Occ Sensor	n/a	n/a	35C	35C	n/a	n/a	35C	35C	n/a	n/a	25C	25C	n/a	n/a	n/a	n/a
EM & Photocell	n/a	n/a	35C	35C	n/a	n/a	35C	35C	n/a	n/a	25C	25C	n/a	n/a	n/a	n/a
EM & Occ Sensor	n/a	n/a	35C	35C	n/a	n/a	35C	35C	n/a	n/a	25C	25C	n/a	n/a	n/a	n/a

n/a=Not Available

## Description

The 11" diameter round Terrapin provides exceptional aesthetics with impressive strength and is available in 10, 15, 20, or 25 watt lumen packages. Polycarbonate lens, clear or opal, combined with four face plates provides a choice of different styles. Also, choose a photo control or motion sensor for control. Choose an emergency battery pack to provide egress illumination.

## Product Specifications

### Housing

- Shallow casting is die-cast aluminum.
- Backplate constructed of 16 gauge aluminum.

### Face Plate Finish

- Injection-molded polycarbonate color is matte black standard, matte white painted, or bronze painted.
- Border paint option is a premium baked-on finish.
- For custom colors, provide manufacturer paint number, RAL number or color chip.

### Shallow Casting Finish

- Polyester powder-coat paint applied in a five-stage process, 2.0 mil thickness, and baked on at 400° F.
- Finish is TGIC, textured, thermoset, polyester powder-coat.

### Mounting

- Surface, ceiling or wall. Interior or exterior.

### Gasket

- Die-cut closed-cell silicone gasket seals lens to casting.
- Gasket is secured with adhesive, and locked in place to the back casting. When the casting is not required, the gasket is mechanically attached to the back plate. One gasket seals the fixture.

### Lens

- One-piece, injection-molded opal or clear polycarbonate, 0.125" thick.
- Attached with 4 recessed T20 stainless-steel TORX®-head fasteners.
- Lens Lifetime Warranty.

### Decorative Faces

- High-impact, injection molded, 0.125" minimum thickness, polycarbonate overlay attached to lens with two recessed T20 stainless steel TORX®-head fasteners.
- Eyelid offers optimal lamp shielding.
- Open face is lens for continuous radial light pattern.
- Border face utilizes the standard open lens with paint on the border, eliminating backlit halo effect.

### Electrical

- LED driver is mounted to the backpan for optimal thermal management.
- High efficiency LED mounted to circuit board.
- 70% lumen maintenance at 50,000 hours when operated in an environment as noted on the Maximum Ambient Operating/Option Matrix on the following page.
- feature bullet

### Labels

- UL/cUL listed for wet locations, ceiling or wall mount.
- IP65 rated.
- Available to mount on combustible or non-combustible surfaces.

### BABA Domestic Preference Compliance

- This Cooper product is manufactured in the US and meets the BABA cost of components rule. To verify a configured product with specific accessories and options meets BABA Domestic Preference Requirements; submit this catalog number to Cooper Lighting Quotation team for validation by our Engineering and Manufacturing teams. Our BABA designation is based on the minimum compliance requirement for BABA. Individual Government Agencies may have more stringent compliance standards. Please refer to the [DOMESTIC PREFERENCES](#) website or consult the CLS Domestic Preferences team for more information. Components shipped separately may be separately analyzed under domestic preference requirements.

## Design Gallery



### Eyelid

Polycarbonate eyelid/cover attached to lens with tamper resistant screws



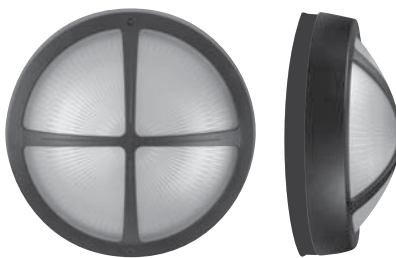
### Border (Painted Border)

Side and edge of lens painted, no front cover



### Ring

Polycarbonate ring attached to lens with tamper resistant screws



### Four Quadrant

Polycarbonate cover attached to lens with tamper resistant screws



### Open

Unpainted lens only. No polycarbonate front cover

### Lens Lifetime Warranty

Fail-Safe will repair or provide a replacement lens for any TR11 lens found to be inoperative due to physical abuse for the duration of the installation under normal conditions.

\*\* To make a claim, contact your Cooper Lighting Agent to arrange an RMA (Return Material Authorization) for the claimed product. Upon receipt and verification of the defect, Cooper Lighting will return to you a repaired or, at Cooper Lighting's sole option, replacement fixture.