

Project		Catalog #		Type	
Prepared by		Notes		Date	




WaveLinx Wired

Control System Software Kit (SW-3-NA)

Provides an interface between an iCANnet system and a computer running WaveLinx Wired iCANsoft and iCANviewSC Scene Control software

Typical Applications
Office • Education • Healthcare • Hospitality • Retail
Industrial • Manufacturing


- 
Interactive Menu
 - Order Information page 2
 - Additional Resources page 2
 - Connected Systems page 3
 - Product Warranty

Product Certification







Product Features


Top Product Features

- Interface between WaveLinx Wired network and configuration software
- WaveLinx Wired network to be configured from a PC
- SW-3-NA kit includes:
 - Carrying Case
 - PC Node
 - Programming Interface PCB
 - Spare 120 Ohm Network terminator resister
 - RJ12 Lead
 - RJ45 to Large Green Adapte
 - RJ45 to Small Green Adapter
 - RJ45 to Blue Adapter
 - USBA-B Cable

Order Information

Catalog Number

Catalog Number	Description
SW-3-NA	Control System Software Kit

Product Specifications

Key Features

- Works with electronic low voltage and incandescent
- Emulates the characteristics of the dimmer that it is connected to in terms of dimming range and resolution

Kit Contents

SW-3-NA kit includes:

- Carrying Case
- PC Node
- Programming Interface PCB
- Spare 120 Ohm Network terminator resistor
- RJ12 Lead
- RJ45 to Large Green Adapte
- RJ45 to Small Green Adapter
- RJ45 to Blue Adapter
- USBA-B Cable

Software

- iCANviewSC Scene Control Software Required

Standards/Ratings

- cULus Listed

Warranty

Consult website for warranty information

Carry Case



RJ45 to large green adaptor cable



PC Node



RJ45 to small green adaptor cable



Programming Interface PCB

RJ45 to blue adaptor cable
(Legacy Products)Spare 120 Ω Network Termination Resistor

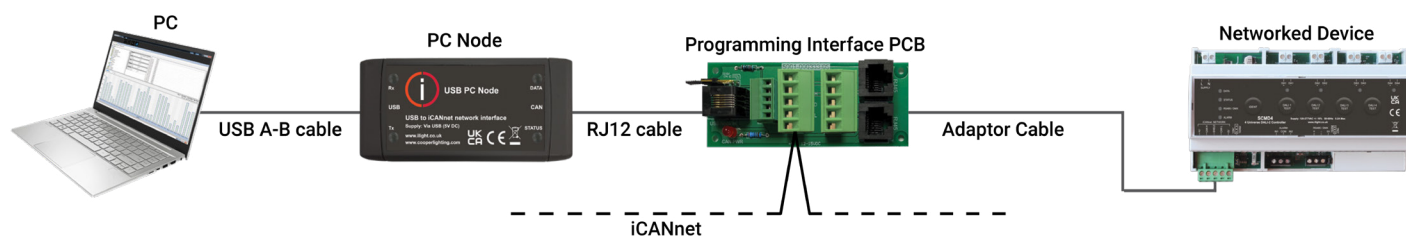
RJ12 Lead 6 core – 3m



USB A-B cable - 2m

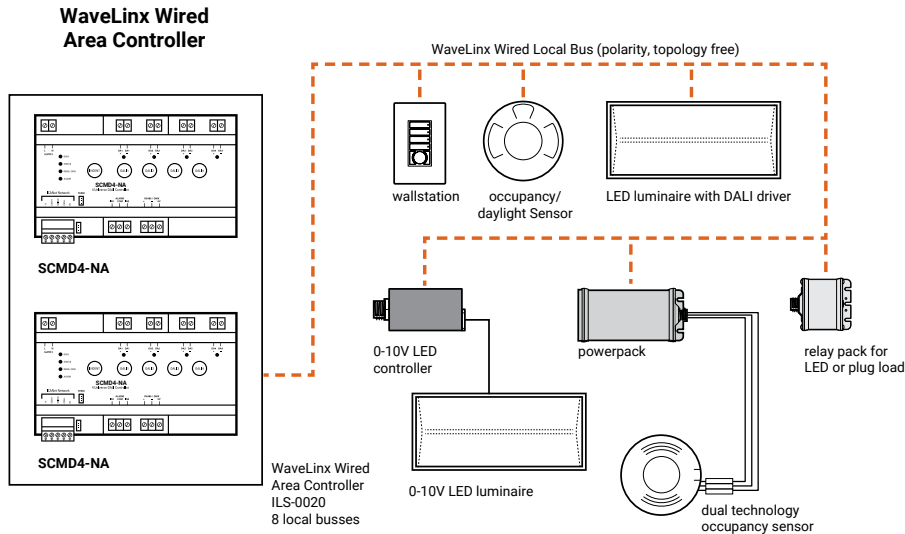


Typical schematic

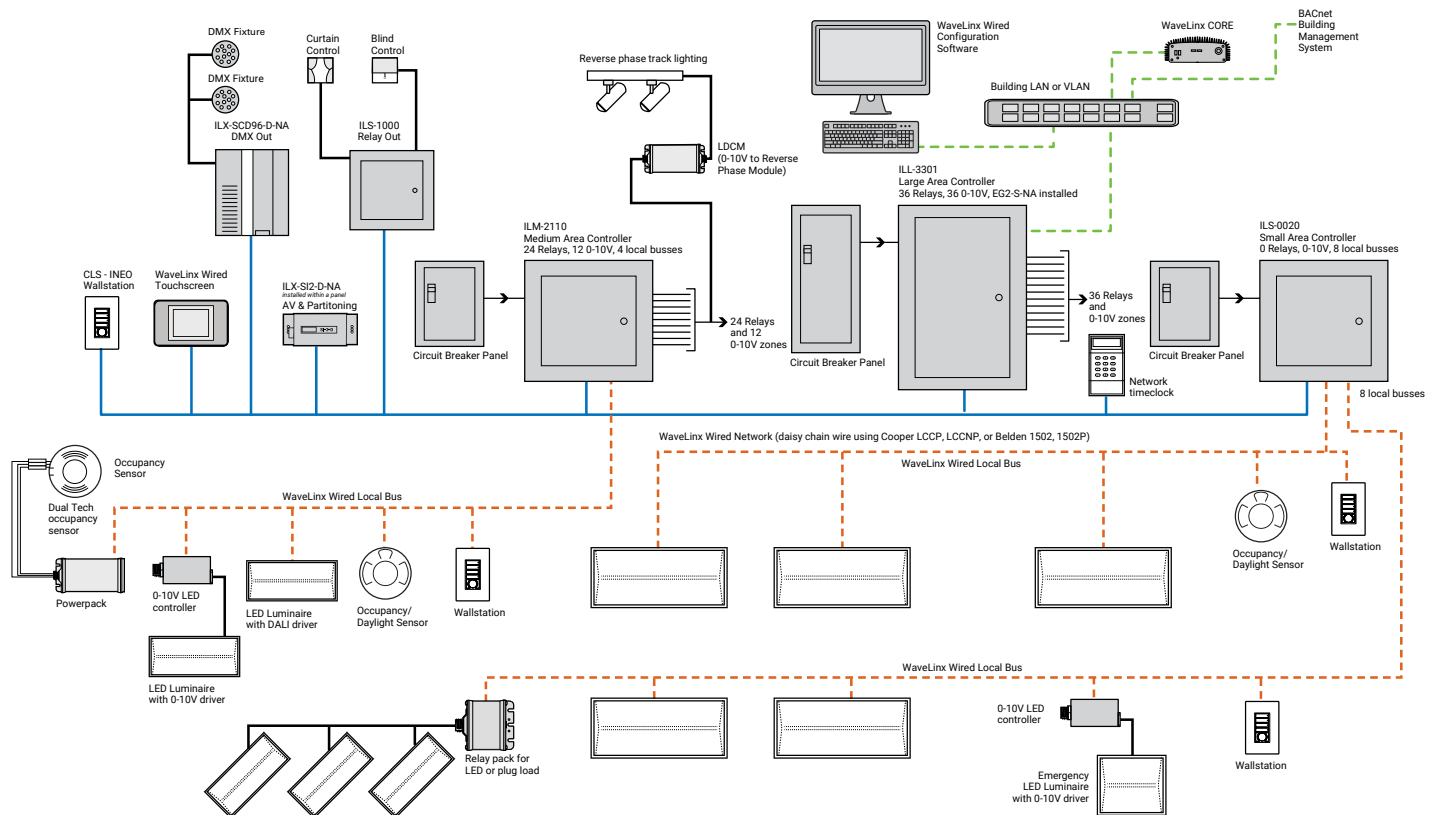


System architecture

Simple WaveLinX wired system



Complete WaveLinX wired system



Sample System Topology:


This diagram shows the main components of the WaveLinx wired and PRO wireless connected lighting system.

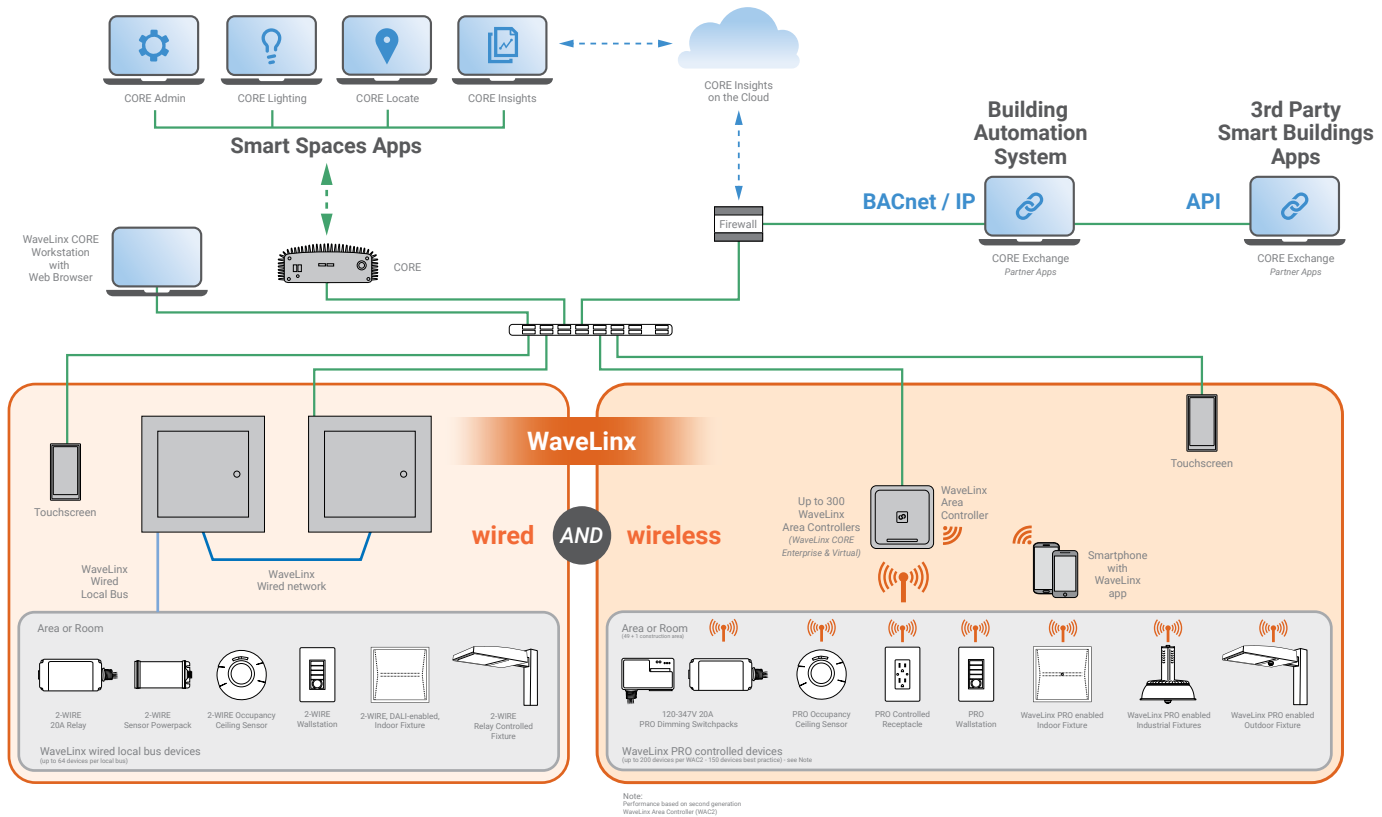
The **WaveLinx PRO wireless system** communicates using wireless mesh technology based on the IEEE 802.15.4 standard. A PoE LAN connection for each WaveLinx Area Controller (WAC) is required for power and data access to the building lighting network.

The **WaveLinx wired system** controls the devices using relay, 0-10V, DMX and the WaveLinx wired digital local bus. The WaveLinx wired system connects to the building LAN using the EG2 module. Each WaveLinx wired area controller communicates on the WaveLinx wired network.

WaveLinx Area Controllers (WAC) and WaveLinx Ethernet Gateways (EG2) communicate with WaveLinx CORE over the Ethernet network.

Please refer to the WaveLinx PRO Wireless Network and IT Guidance Technical Guide and WaveLinx Wired Network and IT Guidance Technical Guide for more information.

 [View WaveLinx Network and IT Guidance Technical Guide](#)



Control Systems

- WaveLinx
- WaveLinx wired
- VividTune