

DESCRIPTION

The Paralux III Series features recessed aesthetics and the latest in energy efficient technology. The luminaire incorporates a true 3" deep precision cell louver into a deep para-contoured fixture housing. This combination creates a total high performance parabolic optical assembly for optimum performance. The series is compatible with all of today's popular ceiling systems and is available with a number of options and accessories for application versatility. The high performance luminaire is designed to offer maximum efficiency and performance for today's unique interior specifications. The Paralux III series is an excellent choice for commercial office spaces, schools, hospitals or retail merchandising areas.

SPECIFICATION FEATURES

Construction

Deep, para-contoured housing, die formed of code gauge, prime cold rolled steel. Die embossed housing has full length die formed stiffeners for added strength. Contoured ballast/wireway cover is easily removed without tools. Die formed captive lampholder bracket fully encloses lampholder wiring permitting easy lampholder replacement. Heavy end plates are securely attached with interlocking tabs and screws. Four auxiliary fixture end suspension points provided. KOs for continuous row wiring. End plates have integral Grid-Lock feature for safety and convenience. Housing features enable fixture to be converted from Grid to T-option or vice versa in the field.*

Electrical**

Ballast are CBM/ETL Class "P" and are positively secured by mounting bolts. Pressure lock lampholders. UL/CUL listed. Suitable for damp locations.

Finish

Lighting grade, baked white enamel finish. Multistage, iron phosphate pretreatment ensures maximum bonding and rust inhibition.

Hinging/Latching

Positive cam action spring loaded, self locking, black steel latches. Safety lock T-hinges allow hinging and latching either side.

Catalog #

Type

Project

Comments

Date

Prepared by

Louver

Die formed of low iridescent, vertical grain anodized aluminum. Finish is Anodic Oxide coating. Accurate precision parabolic cells are held in place with interlocking feature. True-cut mitered corners. Black reveal with integral mechanical light seal around entire perimeter of louver. Louver protected from construction contaminants by polyethylene cover.

Compliance

Options to meet Buy American Act requirements.



EP3GAX2048

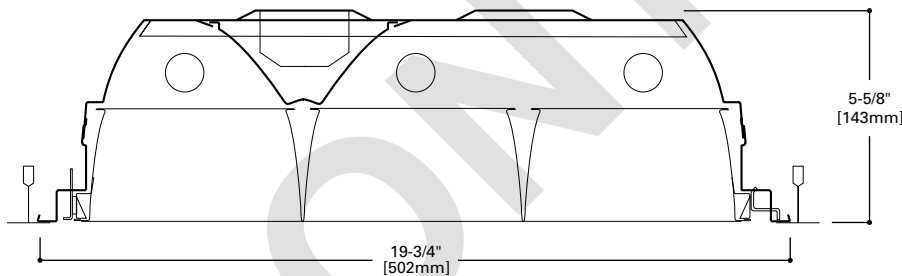
328T8

332

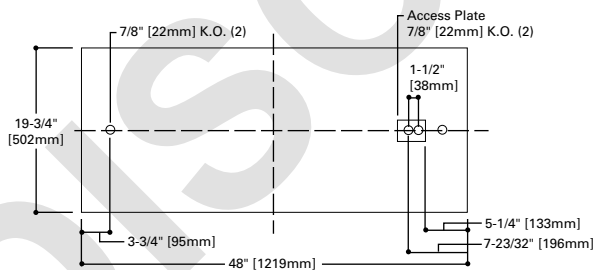
24 Cell

20" X 48" PARABOLIC
3 T8 LAMPS
SEMI-SPECULAR, SPECULAR
OR WHITE PAINTED LOUVER

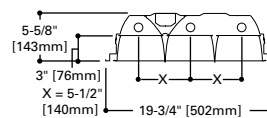
Paralux III
Recessed Static or Air
Supply Troffer



MOUNTING DATA



LAMP CONFIGURATIONS



ENERGY DATA

Input Watts:
EB Ballast & STD Lamps
328T8 (67), 332 (81)

Luminaire Efficacy Rating
LER = FP-55
Catalog Number: EP3GAX2048-332
Yearly Cost of 1000 lumens,
3000 hrs at .08 KWH = \$4.36

*Convertibility applies to housing only. Appropriate shielding media assemblies must be utilized.

**Reference the lamp/ballast data in the Technical Section for specific lamp/ballast requirements.

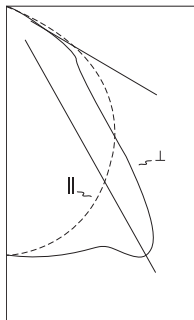
CEILING COMPATIBILITY

G	T	T	F	MZ	Ceiling Type	Trim Type
Grid/Lay-in Standard	Concealed T	Slot Grid	Aluminum Flange Trim With Supporting Swing Gates	Modular Trim With Supporting Swing Gates	Exposed Grid	G
					Concealed T	G or T
					Slot Grid	G or T
					Flange	F
					Concealed "T" or "Z"	MZ
					Metal Pan	MZ
(Verify compatibility/ consult factory.)						

LINEAR DISCONNECT

Designed to provide safe and convenient means of disconnecting power

PHOTOMETRICS



Coefficients of Utilization

rc	Effective floor cavity reflectance																	
	80%				70%				20%									
	rw	70	50	30	70	50	30	10	50	30	10	0%						
0	76	76	76	76	75	75	75	75	71	71	71	68	68	68	65	65	65	64
1	72	70	68	66	70	68	66	65	66	64	63	63	62	61	61	60	59	58
2	67	63	60	57	66	62	59	57	60	58	55	58	56	54	56	55	53	52
3	63	57	53	50	61	56	53	50	55	52	49	53	50	48	52	49	47	46
4	58	52	47	44	57	51	47	44	50	46	43	48	45	43	47	44	42	41
5	54	47	42	39	53	46	42	38	45	41	38	44	40	38	43	40	37	36
6	50	42	38	34	49	42	37	34	41	37	34	40	36	33	39	36	33	32
7	46	38	33	30	45	38	33	30	37	33	30	36	32	29	35	32	29	28
8	42	35	30	26	41	34	29	26	33	29	26	33	29	26	32	28	26	24
9	39	31	26	23	38	31	26	23	30	26	23	29	25	22	29	25	22	21
10	36	28	23	20	35	28	23	20	27	23	20	27	23	20	26	22	20	19

Zonal Lumen Summary

Zone	Lumens	%Lamp	%Fixture
0-30	1950	23.2	36.2
0-40	3278	39.0	60.8
0-60	5139	61.2	95.3
0-90	5390	64.2	100.0
0-180	5390	64.2	100.0

Typical VCP Percentages

Room Size (Ft.)	Height Along		Height Across	
	8.5'	10.0'	8.5'	10.0'
20 x 20	81	75	87	82
30 x 30	87	81	91	86
30 x 60	89	85	92	88
60 x 30	87	83	91	88
60 x 60	89	87	92	90

Candela

Angle	Along II	45°	Across ⊥
0	2395	2395	2395
5	2365	2389	2409
10	2308	2370	2433
15	2237	2339	2456
20	2148	2298	2479
25	2043	2248	2600
30	1920	2211	2735
35	1776	2219	2372
40	1611	2080	1710
45	1423	1635	1199
50	1202	1104	928
55	932	737	800
60	603	450	424
65	300	180	122
70	94	59	53
75	33	28	26
80	12	12	12
85	4	4	4
90	0	0	0

EP3GAX2048-332S381 Electronic Ballast

F32T8/35K Lamps
2800 Lumens

Spacing criterion:
(II) 1.2 x mounting height, (⊥) 1.5 x mounting height
Efficiency 64.2%

Test Report:
EP3GX2048332S381.IES

LER = FP-55

Yearly Cost of 1000 lumens, 3000 hrs at .08 KWH = \$4.36

ORDERING INFORMATION

SAMPLE NUMBER: EP3GAX2048-332S381-UNV-EB81-U

<p>Domestic Preferences ⁽⁹⁾ [Blank]=Standard BAA=Buy American Act</p> <p>Rating Blank=Standard ATW-SW4=Chicago Rated</p> <p>Heat Removal ⁽¹⁾ HR=Heat Removal HRDO=Heat Removal Damper Open HRDC=Heat Removal Damper Closed</p> <p>Series EP3=Paralux III</p> <p>Trim Type ⁽⁴⁾ G=Grid/Lay-in - Standard T=Concealed T/Slot Grid ⁽²⁾ F=Aluminum Flange Trim ⁽⁶⁾ MZ=Modular Trim</p> <p>Air Supply AX=Air Supply Floating Louver X=Blank Side/Floating Louver - Non-Air Supply AVX=Air Supply Floating Louver with Directional Air Vane</p> <p>Width 2048=20" Width x 48" Length</p>	<p>Number of Lamps 3=3 Lamps ⁽⁸⁾</p> <p>Wattage (Length) 28T8=28W T8 (48") 32=32W T8 (48")</p> <p>Louder Color S=Silver W=White</p> <p>Cell Configuration 38=3 Rows of 8, 24 Cell (20x48)</p> <p>Louder Finish I=Semi-Specular/Haze (Low Iridescent) Standard (Silver Only) P=Painted (White only)</p> <p>Option - Aluminum Flange Trim ⁽⁶⁾ Blank=SW (Single White) Type Color 'S' Single 'N' Natural 'R' In Row 'W' White 'E' End of Row</p>	<p>Voltage ⁽³⁾ 120V=120 Volt 277V=277 Volt 347V=347 Volt UNV=Universal Voltage 120-277 ⁽⁵⁾</p> <p>Options GL=Single Element Fuse GM=Double Element Fuse WTR=White Reveal Flex=Flex Installed (Reference Flex ordering information) EL=Emergency Installed ⁽¹¹⁾</p>	<p>Ballast Type EB8 =T8 Electronic Start. Total Harmonic Distortion < 10%</p> <p>No. of Ballast 1, 2 or 3</p> <p>EB8 /PLUS= T8 Electronic Start. Total Harmonic Distortion < 10% High Ballast Factor >1.15</p> <p>No. of Ballast 1, 2 or 3</p> <p>ER8 =T8 Electronic Program Rapid Start. Total Harmonic Distortion < 10%</p> <p>No. of Ballast 1, 2 or 3</p>	<p>Options PAF=Painted After Fabrication REP=Riveted Endplates</p> <p>Packaging U=Unit Pack PAL=Job Pack, out of carton PALC=Job Pack, in carton</p>
---	---	---	--	--

ACCESSORIES ⁽¹⁰⁾

EQ-CLIP-U=FBAR Safety Earthquake Clips ⁽²⁾

NOTES: ⁽¹⁾ Integral end plate grid lock feature not available in heat removal. ⁽²⁾ An EQ Grid Clip is recommended for all 9/16" ceiling systems. Four required per fixture. ⁽³⁾ Products also available in non-US voltages and frequencies for international markets. ⁽⁴⁾ Convertibility applies to housing only, appropriate shielding media assemblies must be utilized. Fixture also adaptable with flanged or modular trims. ⁽⁵⁾ Not available when specifying emergencies, voltage must be specific. ⁽⁶⁾ Specify row configuration, type in catalog number when ordering complete fixture. ⁽⁸⁾ Standard off-center ballast on 3-lamp fixtures. ⁽⁹⁾ Only product configurations with this designated prefix are built to be compliant with the Buy American Act of 1933 (BAA). Please refer to DOMESTIC PREFERENCES website for more information. Components shipped separately may be separately analyzed under domestic preference requirements. ⁽¹⁰⁾ Accessories sold separately will be separately analyzed under domestic preference requirements. Consult factory for further information. ⁽¹¹⁾ Please specify required voltage, 120V or 277V.

Specifications & dimensions subject to change without notice. Consult your Cooper Lighting Solutions Representative for availability and ordering information.

SHIPPING DATA

Catalog No.	Wt.
EP3GAX2048-332S381	41 lbs.