

# HALO®



H247ICAT Slope Ceiling Housing  
H248ICAT1D Slope Ceiling Housing  
with Dimming

**T24  
2005**  
California  
Title 24  
Compliant



## Compact Fluorescent

Slope Ceiling Recessed Housing

Slope Ceiling Recessed Housing with Dimming

**COOPER** Lighting

## Slope Ceiling Housings

### 6" Slope Ceiling 26W, 32W, 42W Compact Fluorescent

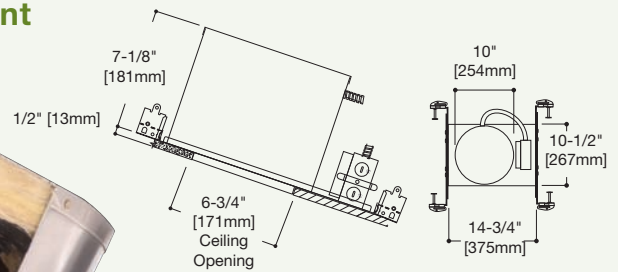


Socket tilting mechanism allows lamp to be aimed straight down regardless of ceiling pitch

GOT-Nail™ bar hangers with pre-installed nails that easily penetrate regular lumber as well as engineered lumber, I-joists and laminated veneer beams. Nail is regressed to prevent snagging and ensure straight penetration

Trim choices include black or white baffles with upper specular reflector

Knockouts with true pry-out slots for use with metal cable or rigid conduit



120V electronic ballast provides quick, flicker-free starts with no ballast hum

Slide-N-Side™ Junction Box simplifies wiring - Accepts the most popular non-metallic cable sizes

Push-In connectors provided in junction box - no wire nuts or additional connectors required

### H247ICAT Slope Ceiling Housing

- 26, 32 or 42W compact fluorescent lamp (not included).
- The lamp socket aiming mechanism adjusts from 2/12 to 6/12 pitch.
- AIR-TITE Sealed and gasketed to limit airflow between attic and living areas.
- 120V electronic compact fluorescent ballast meets FCC Title 47CFR part 18 for consumer equipment.
- Energy Star Qualified.
- Title 24 compliant.
- 2 year limited warranty.

### H248ICAT1D Slope Ceiling Housing with Dimming

- Residential electronic dimming ballast offers 100% to 15% nominal dimming range.
- Standard 120V residential wiring.
- 26, 32 or 42W compact fluorescent lamp (not included).
- The lamp socket aiming mechanism adjusts from 2/12 to 6/12 pitch.
- AIR-TITE sealed and gasketed - limits airflow between attic and living areas.
- The 120V electronic compact fluorescent ballast meets FCC Title 47CFR part 18 for consumer equipment.
- Energy Star Qualified.
- Title 24 compliant.
- 2 year limited warranty.

• For dimming use Advance Mark 10 Powerline rated (2-wire fluorescent) dimmers. Consult control manufacturer for exact models  
 • For further information on the Advance AmbiStar dimming ballast, refer to the brochure at : [http://www.advancetransformer.com/uploads/resources/EL-2420-R01-AmbiStar\\_CFL.pdf](http://www.advancetransformer.com/uploads/resources/EL-2420-R01-AmbiStar_CFL.pdf)

### 6" Slope Ceiling Housing

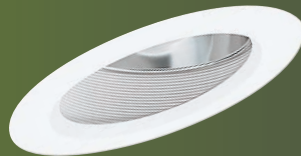
Cat. No.	Lamp (not included)		
	Wattage/Type	Generic ID	/CRI Color Temperature
<b>H247ICAT</b>	26W DTT Quad	CFQ26W/G24q	/827/830/835/841
	26W TTT Triple	CFTR26W/Gx24q	
	32W TTT Triple	CFTR32W/GX24q	
	42W TTT Triple	CFTR42W/GX24q	

### 6" Slope Ceiling Dimming Housing

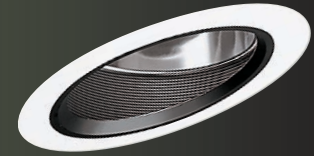
Cat. No.	Lamp (not included)		
	Wattage/Type	Generic ID	/CRI Color Temperature
<b>H248ICAT1D</b>	26W DTT Quad	CFQ26W/G24q	/827/830/835/841
	26W TTT Triple	CFTR26W/Gx24q	
	32W TTT Triple	CFTR32W/GX24q	
	42W TTT Triple	CFTR42W/GX24q	

### Trims for Slope Ceiling Housings

**496W**  
Matte White Trim with White Baffle and Upper Reflector



**496P**  
Matte White Trim with Black Baffle and Upper Reflector



Halo®, GOT NAIL™, Slide-N-Side™, and Pass-N-Thru™ are valuable trademarks of Cooper Industries in the United States and other countries. You are not permitted to use the Cooper Trademarks without the proper written consent of Cooper Industries

Cooper Lighting  
1121 Highway 74 South  
Peachtree City, Georgia 30269  
P: 770-486-4800 F: 770-486-4801  
[www.cooperlighting.com](http://www.cooperlighting.com)